



state of the arts

South Taranaki Arts Bulletin # 37

Spring 2019

| Art News | Opportunities | Exhibitions | Art Events |

Haere mai

Welcome to our Spring edition of *State of the Arts*.

In July I co-hosted an **Arts on Tour NZ** show alongside the fantastic volunteer team at Everybody's Theatre in Ōpūnake. The community run theatre was the perfect venue for Auckland's *The Carnivorous Plant Society*, a high energy group of musicians who performed with a myriad of instruments against a backdrop of custom animations created by band leader Finn Scholes. The family friendly event was well attended and the crowd had the opportunity to meet and talk with the musicians. It's great to be able to bring shows of this calibre to South Taranaki and utilise our wonderful venues. Subsidised ticket prices made it an affordable and highly entertaining event that was enjoyed by many. We look forward to offering more quality shows in 2020.

We celebrated **Puanga**, the Māori New Year, in South Taranaki with events district wide. The *Tiaho* exhibition at Lysaght Watt Gallery in Hāwera was a highlight, bringing together works by *Toi o Taranaki ki te Tonga* artists in a wide range of mediums, including both traditional and contemporary styles and materials. Local artist Rhegan Brooks ran free workshops at Hāwera LibraryPlus to create a set of poi to take home. It was enriching to create a space for community to enjoy creating and learning new skills with their tamariki.

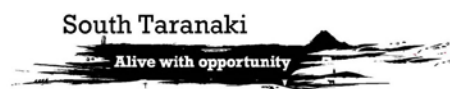
The **Taranaki National Art Awards** committee is gearing up for the eighteenth annual event in Ōpūnake in November. The popular event coincides with the regions garden festivals, providing a large scale showcase of visual art to inspire visitors. Entries are due in September, offering an opportunity for artists to display their work to a large audience. Visitors to the coastal town will also enjoy the vibrant **Great Ōpūnake Yarn Bomb**, bringing a riot of colour to the main street.

We are lucky to have art, theatre, cultural and heritage groups in many of our towns in South Taranaki. I encourage you to get into it - join up, get involved, make real connections with people and above all, enjoy yourself ☺

Ngā mihi,



Michaela Stoneman | Arts Co-ordinator | South Taranaki District Council | 0800 111323
michaela.stoneman@stdc.govt.nz | www.southtaranaki.com



The Carnivorous Plant Society at Everybody's Theatre

South Taranaki Creative Communities Funding

Do you have a project in mind that will get people involved in the arts or strengthen your local arts sector? The Creative Communities Scheme, administered by the South Taranaki District Council on behalf of Creative New Zealand, aims to foster an environment that supports creative expression and provides greater opportunities for people to enjoy the arts, wherever they live and whatever their circumstances. Individuals and groups may apply for funding for projects that:

- Create opportunities for local communities to engage with and participate in arts activities
- Supports the diverse arts and cultural traditions of local communities, enriching and promoting their uniqueness and cultural diversity
- Enable and encourage young people (under 18 years) to engage with and actively participate in the arts.



The first round of the Creative Communities Scheme for 2019/20 opened on **30 July** and closes on **10 September** for projects that do not start before **1 October 2019**.

Application Forms and a **Guide for Applicants** can be requested from the STDC Arts Co-ordinator, Council's Administration Building on Albion Street, Hāwera or downloaded under the [Funding and Grants Support](#) section of the STDC website. Feel free to contact [Michaela](#) or [Jacinta](#) for any questions or support for your application prior to the due date.

For further information, email funding@stdc.govt.nz or phone 0800 111 323 or 06 278 0555

Arts Lease Programme – South Taranaki Artists

The South Taranaki District Council calls for visual art submissions from South Taranaki artists for lease and display in the Council's Administration Building in Hāwera. The Art Lease Programme was established in 1996 to support and nurture our creative community. The foyer gallery enables us to showcase a selection of work from our talented artists and offer their work for sale with no commission taken. A glass security door was installed in early 2016, but public access is still available during meetings and by request at the customer service desk. To qualify for the Art Lease Programme, artists must reside within the South Taranaki District boundaries. Selected artists are paid a fee of \$150 for a year lease, which is paid in November.

Please note: Only wall hanging artworks are eligible.

To submit artworks (up to 4 per artist), please include this information:

- Your name, address, daytime phone number and email address.
- A clear photograph or scan of the artwork(s). *Digital files preferred, at least 1 MB file size please.*
- Title, dimensions, medium and date of each artwork.

Email to the address below or post to: Michaela Stoneman, Arts Co-ordinator, South Taranaki District Council, Private Bag 902, Hāwera 4640 (or drop in to the Albion Street office and attention to M. Stoneman).



2018/19 Arts Lease artwork by Carvl Murray

Closing date for submissions: 5.00 pm Tuesday 1 October 2018

For more information, please phone Michaela on 0800 111 323 or email: michaela.stoneman@stdc.govt.nz



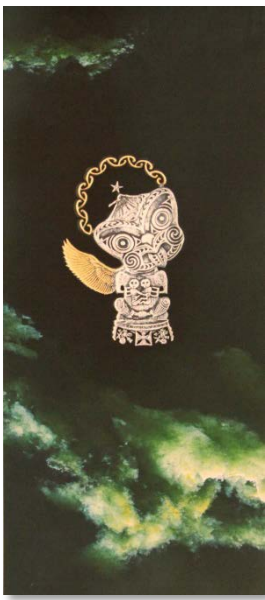
Ronald Hugh Morrieson Literary Awards 2019

Ronald Hugh Morrieson Literary Awards 2019 Presentation Night
7.00 pm Thursday 31 October 2019
Hawera LibraryPlus, High Street, Hāwera

The annual Ronald Hugh Morrieson Literary Awards offer a \$1000 prize in each of the categories; Short Story, Poetry and Research. Join the judges, Dame Fiona Kidman and James Brown at this year's presentation at Hāwera LibraryPlus.

Free writing workshops were held for local secondary schools and the public in June 2019. The awards are sponsored by the Lysaght Watt Trust. Finalist stories from each year are collated into a book and can be borrowed or purchased from any South Taranaki LibraryPlus.

For more information visit: www.rhморriesonawards.com



2018 Works on Paper Award winner,
Matthew McIntyre-Wilson

Taranaki National Art Awards 2019

Sandfords Events Centre, Tasman Street, Ōpūnake

Entries Close: 20 September 2019

Awards Ceremony: 7.00 pm Friday 1 November 2019

Exhibition: 10.00 am - 4.00 pm, 2 - 9 November 2019

Ōpūnake's *Taranaki National Art Awards* is a highlight of the Region's creative calendar. Entries are open for this annual national visual arts competition. Cash prizes totalling over \$12,000 for winning and highly commended artworks are offered in seven categories: Painting, Taranaki Artists, 3D, Works on Paper, Fibre Art, Tō Taranakitanga and Photography.

Entry is \$20 per artwork, artists can only enter each category once but can enter multiple categories. This year is the eighteenth anniversary of this event, which would not be possible without the generous support of sponsors and the Ōpūnake community. All entries are displayed in the exhibition and most works are for sale, offering a unique opportunity to purchase original art. The exhibition coincides with the Taranaki regional garden festivals. A new category introduced in 2018, is the Tō Taranakitanga section. Sponsored by Te Puni Kōkiri - Ministry for Māori Development, the category is specifically for Māori artists who whakapapa to an iwi in Taranaki, offering a forum to express their connection to their Mounga. This year the committee welcomes co-judges Karl Chitham, Director at the Dowse Art Museum in Lower Hutt and Aileen Burns, Co-Director of Govett Brewster Art Gallery/Len Lye Centre in

New Plymouth. The awards ceremony offers a great night to enjoy diverse New Zealand artwork and the opportunity to meet many of the artists. Tickets are available on the door and include entertainment, drinks and nibbles. Become a *Friend of the Taranaki National Art Awards* for \$20 for a ticket to the awards ceremony, early VIP entry and unlimited free entries to the exhibition. Artists are encouraged to enter online, only \$20 per entry – this includes a complimentary ticket to the awards ceremony. Regular updates and news are featured on the Facebook page.

Facebook: Taranaki National Art Awards

Please visit the website to find out more and enter: www.taranakiartawards.co.nz

Te Ramanui o Ruapūtahanga

Te Ramanui o Ruapūtahanga, South Taranaki's new Library, Culture and Arts Centre, has received a \$2.8 million grant from the TSB Community Trust. "The *Te Ramanui o Ruapūtahanga* project is to create a new vibrancy in Hāwera providing enhanced community services, creating economic stimulus and improving connectivity for both the South Taranaki community and for visitors to the district," says Maria Ramsay, Chief Executive TSB Community Trust. "It also aligns well to our strategy by increasing access to opportunities, enhanced tamariki and whanau wellbeing and increased capability." South Taranaki District Council's (STDC) Chief Executive Waid Crockett, says the \$8 million facility, to be located on the corner of High and Regent Streets, is the key anchor project in the Hawera town centre redevelopment. "At 1605m² the building combines a number of facilities onto one site, including a bigger library, meeting rooms, public toilets, an art gallery and heritage exhibition space, i-SITE visitor centre and café," says Mr Crockett. The building, designed by architects Warren and Mahoney, takes environmental sustainability into account wherever possible, which helps keep ongoing operational costs to a minimum. "*Te Ramanui o Ruapūtahanga* means the beacon or signal fire of Ruapūtahanga, a famous Taranaki Māori ancestress. Ruapūtahanga would light the beacon as a signal for Iwi to meet so they could talk, share ideas and knowledge. We think the name, which was gifted by Ngāti Ruanui, perfectly symbolises the new centre's purpose as a place for the community to meet in order to share information and gain knowledge," he says. To date the site for the new centre has been purchased and detailed designs are being developed. Construction is planned to begin in late 2019 - early 2020 to be complete by July 2021.



Elektra: Light Event

Friday 8 November 2019

King Edward Park, High Street, Hāwera

Elektra is a new lighting event created to replace the previous Fireworks Spectacular. See King Edward Park lit up with the launch of 1000 lanterns on the boating lake and illuminated designs by students working with local businesses. Entertainment group *Highly Flammable* offers a *Circus Play Zone* for the kids, LED glowing butterflies roaming the Park, the daring *Circus of Flames* and *Ignite the Light* fire shows. This free family event offers a selection of food carts or bring a picnic and enjoy an entertaining evening with a difference.

For more information contact the Community Events Co-ordinator 06 278 8599 or Email: events@stdc.govt.nz

Arts in the Park

Saturday 7 December 2019

King Edward Park, High Street, Hāwera

Registrations are open now for artists and groups to take part in Taranaki's premier outdoor arts and crafts festival. Enjoy the large, pleasant, open environment of King Edward Park to exhibit, demonstrate and sell your arts or craft - stalls are FREE! A walk through the park is a voyage of discovery, including local musicians, food stalls, hands-on art activities for kids in the *Art Tipi* and much more. *Arts in the Park* offers an entertaining day for the whole whanau, offering an opportunity to support local artists and craftspeople by purchasing handmade goods to kick start your Christmas shopping.



Registration forms are available from TSB Hub, Hāwera i-SITE, South Taranaki LibraryPlus centres or contact the Community Events Co-ordinator 06 278 8599 or Email: events@stdc.govt.nz



Pātea Pou Project

A new public art project with a focus on the local ocean environment will be installed next summer. The *Pātea Pou Project* is a collaboration between Project Reef Life, Pātea Area School, South Taranaki District Council and local engineer Gary Prentice. Co-facilitated by STDC Arts Co-ordinator Michaela Stoneman and Karen Pratt from Project Reef Life, the project will utilise the seven timber poles situated along the roadside at Pātea Golf Course on the drive to Mana Bay. The new project will feature laser-cut cortene steel silhouettes designed by a group of students at Pātea Area School, including specific species local to the area; blue cod, stingray, mollymawk albatross and blue whale. The students are involved in all stages of the project including research, design, funding, painting, fabrication and installation. The project aims to raise awareness of the diversity of our local ocean reef situated 11 km offshore from Pātea. Funding was gained from South Taranaki *Creative Communities Scheme*. The laser-cut cortene steel panels will be fabricated by Reid Engineering in Hāwera, with installation support provided by Hooper Engineering.

Gallery Pātea News

Gallery Patea is a non-profit organisation established to provide to an outlet to support local artists and crafts people. The gallery welcomes expressions of interest from artists to exhibit and sell their work. The Pātea Community Piano is now established at Pātea Four Square for the public to play, proving popular with many talented locals. The 100 year old piano was donated by Mark Nicholas and was painted by local Pātea artists from the gallery - Mareta Marsters-Grubner, Dora Baker, Jenni Corbett, Bronwyn Watrus and Gabrielle Belz. The local Pātea Community Board has had the piano professionally tuned and Hooper Engineering provided the custom made trolley for transporting in and out of its home at the local Pātea Four Square.

If you are interested in volunteering at the gallery and supporting this local community gallery, please call in or get in touch.



**For more information contact Gabrielle: 021 0813 8355 | Open: 10.00 am - 4.00 pm Thursday - Sunday
Gallery Pātea, 53a Egmont Street, SH3, Pātea | Facebook: Gallery Pātea | Email gallerypatea@gmail.com**



Pipe Organ Recitals in Hāwera

New Plymouth based professional musician Christopher Luke presents organ recitals at the Wesley Methodist Church in Hāwera this year. The 1916 Alfred Brake pipe organ is historic and unique to New Zealand, listed with the New Zealand Organ Preservation Trust with a Category 1 certificate. Roy Tankersley will precede the performance with a presentation on the history of the organ. The following series of Wednesday recitals are funded by the TSB Community Trust: **25 September, 27 November and 18 December 2019.**

These recitals will be at 11.15am and will run for 45-55 minutes duration. Gold coin donation entry, refreshments following the recital. All welcome.

For more information contact Christopher Luke: Email music@taranikathedral.org.nz

Hāwera Art Club

Meet: First Friday of each month at 1.00pm

Salvation Army Complex, 19-23 Regent Street, Hāwera

The Hāwera Art Club was established 1969 when a group of art enthusiasts gathered monthly above Barclay and Rowland Chemist shop in High Street. Prior to the availability of the Lysaght Watt Gallery, annual exhibitions were installed in bank foyers, later in empty shops and in the Egmont Power Board foyer. Membership age ranges from age 30-90 years, proof that age is no barrier with a common interest. Meetings are held to socialise, share and discuss artistic process and have access to a library of instructional books and DVD's. The Club has held two public exhibitions at community galleries in Hāwera and Eltham this year, providing an opportunity for members to showcase their work. Anyone with an interest in art, regardless of ability, is welcome to join.



Painting by Frank Eustace

For further information call Cheroil Filbee 027 2444 953 or email icemaide1@orcon.net.nz



From the 2019 production of 'Annie'

Hāwera Repertory News

Hawera Repertory Club Night

7.30pm, Friday 20 September 2019

Repertory House, Hāwera

An evening of musical performances; individual, duo or group in a variety of styles. Bring a friend or two, a plate to share for supper and BYO drinks. The theme for September is 'Shenanagins'.

Barbara Leydon Junior Drama Festival

17, 18 & 19 September 2019

Hawera Memorial Theatre, Albion Street, Hāwera

Plays presented by Hawera Repertory, local schools and drama groups.

Medieval Banquet: 5 -7 December 2019

For more information contact hawerarepitory@gmail.com or visit www.hawerarep.org

Hāwera Memorial Theatre Trust

The Hāwera Memorial Theatre Trust formed in 2011, to take on the role of kaitiaki (guardian) of Hāwera's community theatre, working alongside the South Taranaki District Council. Generous public donations, grants and other fundraising activities have enabled significant improvements to the theatre. You can become a *Friend of the Theatre* to support the work of the trust - forms can be downloaded [here](#). *The Theatre Trust Singers* are a community choir of 30 singers from Hāwera and surrounding towns. Formed in 2018, the choir is led by Peter Copeland and pianist Claudia Bluett, supported by Judy Brown and Megan Te Ahuahu. Public performances include the opening of the VC Commemoration Gardens, Carols in Naumai Park and the Trust's end of year variety show. The choir are keen for more singers to join, especially more male voices. Rehearsals are on Tuesday nights from 7:00 pm - 9:00 pm at the theatre.



Let's Twist Again

23 - 30 November 2019

Hāwera Memorial Theatre, Albion Street, Hāwera

Enjoy the songs of the 60's by Chubby Checker, The Four Seasons, The Everley Brothers, The Beatles and more. Directed by Judy Brown and Megan Te Ahuahu. Bookings open in August 2019, through TicketDirect and the South Taranaki i-SITE in Hāwera.

**To join the choir, contact: Judy Brown on 06 278 5834 or Email: judy-brown@xtra.co.nz
Email: haweratheatrefriendstrust@weebly.com | Website: <https://haweratheatrefriendstrust.weebly.com>**



Taranaki Partner Dance Community

Have fun and learn to dance a variety of partner dance styles, suitable for social and club dancing. The Taranaki Partner Dance Community runs weekly classes in Hāwera throughout the year. No experience or dance partner required. Classes are designed to teach dancers to freestyle, to identify different beats, to learn the features of each dance style and to dance the right style suited for a particular music. The classes include moves, partner work, techniques & freestyle time. Classes, workshops, private lessons, wedding dances and choreography are offered at a non-profit & low cost to support and grow Taranaki's local and rural dancing communities. Classes are held on Tuesday and Wednesday nights at the Hāwera Presbyterian Centre on 35 Argyle Street.

Full details and registration online, visit: www.taranakidance.co.nz or contact Maria on 027 727 1749
Facebook: [Taranaki Partner Dance Community](https://www.facebook.com/TaranakiPartnerDanceCommunity)

Hāwera Art School & Creative Space

Hāwera Art School & Creative Space has been providing art classes and holiday programmes for children, youth and adults for the past six years. Due to a sudden change affecting the rental agreement of the premises, the tutors have recently announced the School will close at the end of October 2019. Usual classes will remain running up to that time.

Established for the benefit of the local community and wider District, the School has provided an inclusive space designed to nurture and support individuals and groups, from beginners to established artists. Co-founders and tutors Erryn Willcox and Carl Fairweather hope to be able to continue providing creative learning opportunities in the future. Hāwera Art School and Creative Space thanks all students, tutors, sponsors and cheerleaders for their support and encouragement over the past six years.



20 Union St, Hāwera | Phone or text: 027 361 6930

Facebook: [Hāwera Art School](https://www.facebook.com/HaweraArtSchool) | Email: haweraartschool.creativespace@gmail.com

Aotea Utanganui – Museum of South Taranaki

What brings you here? A Tale of Two Towns: Thomas Slade **9 September 2019 - February 2020**

An exhibition by Wellington based photographer Thomas Slade comparing two rural towns - Waverley and Shannon. The photographs examine both the positive and negative changes in rural New Zealand. Why does one town decline while another prospers? Small town New Zealand is struggling and statistics show declining populations and less employment opportunities. Since the closure of the Iron Ore Mines, Waverley has felt the increased effects of a diminishing population, lack of services and low house prices. "These photographs of rural New Zealand highlight the changes and remind us of where we have come from as a country and of our identity as New Zealanders" Slade says. Slade holds a Master of Fine Arts from Massey University, Wellington.

Cinema | Wāhi Kiriata

Screening daily in the Media Theatre, documentary footage shot by Aldor Films of Pātea Primary School in 1970.

POP-UP Museum - Ōpūnake

The POP-UP Museum will be installed in the main street in Opunake and showcase fascinating museum objects, interactive and April as part of Heritage & Family History Week 2020.



'Waverley High School' by Thomas Slade

Aotea Utanganui - Museum of South Taranaki, 127 Egmont Street, Pātea | Phone: 06 273 8354

Facebook: [Aotea Utanganui](https://www.facebook.com/AoteaUtanganui) | www.museumofsouthtaranaki.wordpress.com

Email: museum@stdc.govt.nz Open: 10.00am - 4.00pm Monday – Saturday

The Village Gallery - Spring Exhibitions



Papatuanuku: Treasure of the Earth

Runs until 20 September 2019

Two Eltham artists, Ashlee Robinson and Ivan Toopi, bring their fresh new styles of art, including paintings, mixed media, illustration and carvings from wood and pōunamu.

Painting by Ashlee Robinson

Stratford Painters

23 September - 18 October 2019

The Stratford Painters meet each Tuesday at the Skinner Hall at the A & P Showgrounds in Stratford, between 9.30 am and 3.00 pm. Some of the members have been with the group for many years, greatly influenced by the late Tom Kreisler. The Argentinian-born artist and teacher based in New Plymouth tutored the group in Stratford for a number of years through the Taranaki Polytech classes. Most of the artists are regular exhibitors in the Stratford Art Society exhibitions and some also show work in galleries further afield. A wide range of styles and media are represented in the exhibition.

The Three Potters

21 October - 15 November 2019

Colourful and imaginative pottery and mixed media works by Margaret Foley, Robyn Smaller and Donna Hitchcock. Their annual exhibition is listed in the Taranaki Fringe Garden Festival booklet. The Gallery is listed as a 'Place of Interest' in the Festival, which runs from 1 - 10 November. Many of the unusual and decorative items are designed to be suitable for the garden and there will be unique pieces for the home as well.

Christmas Cracker

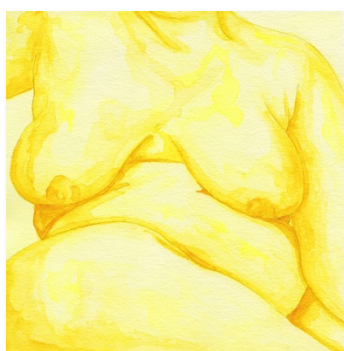
18 November - 13 December 2019

Friends of the Village Gallery Members' Exhibition. The whole Gallery will again be filled with the diverse work of our Members, with some items being particularly suitable for purchase as gifts. For the remainder of December and for two weeks in January, the Gallery will close, allowing our volunteers to take a well-earned break over the holiday period.

The Village Gallery, 166 High Street, Eltham Open: Monday - Saturday 10.00 am - 3.00 pm

Facebook: [Village Gallery Eltham NZ](#) | Email: villagegalleryeltham@gmail.com

Lysaght Watt Gallery – Spring Exhibitions



Hāwera Art Club - As We See It

2 - 28 September 2019

Recent work presented by members of the Hāwera Art Club in a variety of mediums.

Cath Sheard & Dimmie Danielewski: Body of Work

1 - 26 October 2019

Cath is based in Pātea. Her work focuses on her memories of the landscape, its colours, shapes and patterns. These works are inspired by recent visits to the Hokitika Gorge on the Westcoast of the South Island. Dimmie is based in Eltham. Her work focuses on the diversity of human bodies, with the aim to encourage the viewer to see the inherent beauty and value in all bodies. She says "Be kind to your body, you only get one!".

Painting by Dimmie Danielewski

Dorothy Andrews & Jenny Bielawski: Mundus III

28 October - 23 November 2019

Dorothy and Jenny began exhibiting together after graduating at WITT, New Plymouth. Although their work is very different, their love of plants and the natural environment unite their ideas to make an interesting and cohesive exhibition. Dorothy's love of gardening led her to botanical style drawing. She loves the intense study of every detail of the plant and the challenge of reproducing this on paper. Jenny recently returned from Cornwall and will show new and recent work including watercolours, printmaking, knitted wool and botanical drawings.

Lysaght Watt Gallery 4 - 6 Union Street, Hāwera

Website: www.lysaghtwattgallery.co.nz | Facebook: [Lysaght Watt Gallery](#)

Open Monday - Friday 10.00 am - 4.00 pm Saturday 10.00 am - 1.00 pm | Phone 06 278 7611

Great Ōpūnake Yarn Bomb 2019

1 – 13 November 2019

Opunake Market Day: 9.30 am – 1.00pm 2 November 2019

The Ōpūnake Lakeside Lions Club are hosting *The Great Ōpūnake Yarn Bomb* for the third consecutive year. The community installation is an explosion of colour and creativity and will include new creations alongside popular favourites. Displays are hugely supported by local businesses and will be located throughout the main shopping area of Ōpūnake. The Market Day involves local schools, sports teams and community organisations. The *Great Ōpūnake Yarn Bomb* coincides with the regions garden festivals and the Taranaki National Art Awards, offering a wide variety of creativity to visit in Ōpūnake.



Kete Aronui Gallery

Kete Aronui features locally created art, design and gifts by emerging and established Taranaki makers. The space is constantly evolving with new works of art, sculpture, jewellery, ceramics, prints, greenstone, cards, artisan food and coffee on display. A focus on quality items from the Taranaki region allows for building longstanding relationships with local artists. The gallery also runs an online platform.

Kete Aronui has a new collaboration with Emmanuelle from Little French Bird Photography. Emmanuelle will be in store twice-monthly running 20-minute mini-studio sessions. For \$20 you get a professionally taken digital photo. The sessions are ideal for capturing those baby bumps, tracking baby's monthly milestones or getting the family all together. Customers can use the session as they wish and can have multiple different photos. Bookings are preferred but not essential. Keep an eye on Kete Aronui's Facebook page for upcoming dates.

Kete Aronui, 86 Tasman Street, Ōpūnake | Website: www.ketearonui.co.nz

Open: 10.00am - 4.00pm Wednesday - Sunday Phone: 021 951 816 | Facebook: [Kete Aronui Gallery](https://www.facebook.com/ketearonui)



Everybody's Theatre

Boutique Nights - First Sunday of the Month

Get some friends together and enjoy a wine or beer with some tasty treats at our Boutique Nights. \$28 per person. Ticket includes movie, one drink and snacks. Bar facilities available, no BYO. Check the website for full details of upcoming screenings.

Ritz Swing

2.30 pm – 4.00 pm, 10 November 2019

18 Piece Jazz band, vocals by Mike Gordon and Unity Wara. Door sales, \$10 Adults, \$5 kids. Snacks, tea & coffee available. Phone 027 383 7926.

Everybody's Theatre, 72 Tasman Street, Ōpūnake

Website: www.everybodystheatre.co.nz | Email everybodystheatre@gmail.com

Life Drawing Group: Ōpūnake

7.00 – 9.00pm Tuesday Evenings

Kete Aronui Studio, 86 Tasman Street, Ōpūnake

Regular open sessions of life drawing with a model. Untutored with structured drawing time sequences. All welcome to join this small group of artists, there is space for 10 people. Please bring paper and drawing equipment. \$10 waged/\$5 unwaged per session.

For more information contact: Marianne Mugeridge 06 274 5713



Virtual TART News

Virtual TART is an online gallery showcasing work by a wide range of Taranaki artists and bi-annual exhibitions. Facilitated by artist Dale Copeland, regular newsletters offer local and international opportunities to exhibit and other creative projects to participate in.

September/October: Playing on Words

Two assemblage artists, a world apart.

November/December: Hidden in the Undergrowth

December/January: 2020 Vision

An open exhibition. 34 artists have signed up so far, check the website for details of how to be involved.



Painting by Fern Petrie

For more information, visit: www.virtual.tart.co.nz

WITT Art & Design Courses



The Western Institute of Technology (WITT) in New Plymouth are currently offering two Arts & Design courses for 2020.

NZ Certificate Art & Design (Level 4)

Start dates, 2 March & 20 July 2020 (15 week semesters)

Develop your creativity with core courses in Visual Arts, Digital Media, 2D Studies and New Zealand Art giving you the skills to pathway onto further studies. A hands-on studio based programme which enables the learner to explore, investigate and develop a range of core skills relating to Art & Design.

NZ Diploma in Art & Design (Level 5): 1 year, 2 March – 13 November 2020

This qualification is designed for learners who wish to further develop their practical and conceptual skills and knowledge in arts, crafts and/or design.

For more information or to enrol, visit: www.witt.ac.nz/Courses/Arts-and-Design/

Quirky Fox Gallery

Materfamilias

Runs until 17 September 2019

The first solo exhibition of Rachelle Sutherland, 'materfamilias', explores the matriarchs from our past and present. Each stippling original features a rose: either as the main image or as a hidden detail. Throughout the series the rose represents what is passed from one generation to the next: it can be manipulated, it can evolve; history cannot be changed, but what we carry into the future does.

Lottie by Rachelle Sutherland



Quirky Fox, 205a High Street, Hāwera | Phone: 06 2786909
Open: Monday - Friday 9.30 am - 5.00 pm Saturday 10.00 am - 12 noon
Website: www.quirkyfox.co.nz | Facebook: Quirky Fox



Painting by Ross Whitlock

Fenton Street Art Collective

Ross Whitlock: Plein Air Painter

1 September - 10 October 2019

Fenton Street Art Collective offers diverse artworks by New Zealand artists, good food, a gin distillery and professional service. Studio tours and commissions welcome.

Life Drawing Sessions: 4.00 pm – 6.00 pm Sunday afternoons. \$10 per session.

11 Fenton Street, Stratford | Facebook: Fenton Street Art Collective
Open: 8.00am – 3.00pm Mon – Thurs, 8.00am – 9.00pm Friday, 9.30am – 2.00pm
Weekends | Phone: 021 0299 2839

Percy Thomson Gallery - Spring Exhibitions

The Crescent Moon – The Asian Face of Islam in New Zealand

Runs until 8 September 2019

An exhibition of photographs and stories created in 2009, to encourage understanding of Islam after 9/11 is being resurrected at Percy Thomson Gallery as a response to the March 15 massacre at two Christchurch mosques. Featuring a series of photographs by iconic New Zealand photographer Ans Westra and personal stories from 37 individuals of Muslim faith, written by Adrienne Jansen. Westra and Jansen travelled the country with camera and tape recorder to interview subjects who shared their thoughts about the media, about 9/11, about identity and faith – but mostly they just shared their own lives. Supported by members of the Taranaki Muslim community. *Fazilat Rashid by Ans Westra*



Tell It Again: Repetitions from the Archive – Antonia O'Mahony

Runs Until 8 September 2019

Taranaki artist and printmaker Antonia O'Mahony's exhibition focuses on the western New Plymouth suburb of Moturoa where her family has lived for many generations. The work is part of her Master of Fine Arts thesis.



Angles of Perception - Woven Form: The Professional Weavers Network of New Zealand

14 September – 6 October 2019. Opening event: 1.00 pm Saturday 14 September 2019

Ode to Colour: Holly Smith, Henriette Reason and Brenda Cash

14 September – 6 October 2019 *Painting by Brenda Cash*

Regional Embroidery Exhibition

12 October – 10 November 2019

Percy Thomson Gallery, Miranda Street, Stratford | Director: Rhonda Bunyan | Phone 06 765 0917

Open: Monday - Friday 10.30 am - 4.00 pm Saturday - Sunday 10.30 am - 3.00 pm

Website: www.percythomsongallery.org.nz | Facebook: Percy Thomson Gallery

Powerco Taranaki Garden Festival – South Taranaki Events

The Country Fair

10.00 am – 3.00 pm 3 November 2019. Openlands, 1064 Auroa Rd, Manaia

A festival event for the whole family to enjoy a relaxing day of food, music and shopping with hand-crafted quality goods from local stall holders. Live performance from singing duet Two Fat Ladies. Free event, garden fee applies (\$5).



A Walk Through the Past with Ken Horner

11.00 am, 3/6/10 November 2019. Puketarata Garden, 14 Ngawhini Rd, Hāwera

Puketarata Garden lies inside an outer rampart of the historic Puketarata pā site, one of a number in the valley region. For four or five hundred years Puketarata was home to Māori who lived and gardened at the pā site or its adjacent kainga (village). Join amateur historian and owner of Puketarata Garden, in a conversation about Puketarata's place in history. Free event, garden fees applies (\$10)

Views into the Garden

Open: 10.00 am – 4.00 pm daily. King Edward Park, Cnr Upper High St and Waihi Rd, Hāwera

A floral spectacle featuring the work of several local floral artists along with other fascinating gardening exhibits. Features at 12 noon include show-and-tell workshops, garden speakers, live music and entertainment. Free family event.

The Garden Party

2.00 pm – 5.00 pm 3 November 2019

Wear your Sunday best and come to the marquee in King Edward Park. Enjoy background jazz, afternoon tea and a complimentary glass of wine. Bookings at South Taranaki i-Site. Tickets are \$25pp. Contact Miranda Cullen 027 571 8893.

Hanging Baskets Demo with Jenny Oakley

11.00 am Saturday 2 November 2019. Oakley Garden, 79 Lower Normanby Rd, Manaia

Selected gardens will host renowned Taranaki artists in their gardens during the festival, including Celebration Platters (Mike & Celeste Cole, pictured right) at Tairoa Lodge and Richard Landers at Gravetye.



For more information visit: www.gardenfestnz.co.nz

Govett-Brewster Art Gallery/Len Lye Centre News



Until 17 November:

Waking Up Slowly: Elizabeth Thomson and Len Lye

Len Lye: Art That Moves

Yuichiro Tamura: Milky Mountain / 裏返りの山

Fiona Clark: Raw Material

Mikala Dwyer: Earthcraft

Check the website for talks, tours, workshops, hands-on art making and cinema screenings offered.

Admission: Free for New Plymouth District residents, Gallery Friends and Under 16's (ID & proof of address required) Seniors \$10 | Everyone else \$15. Sign up to be a Gallery Friend at govettbrewster.com/support/friends

Govett-Brewster Art Gallery/Len Lye Centre, Queen Street, New Plymouth | Phone: 06 759 6060
Open: Seven days 10.00 am – 5.00 pm. Closed Christmas Day. Late night cinema 7.00 pm Thursdays
Website: www.govettbrewster.com | Instagram @GovettBrewster | Facebook: Hello NP

Puke Ariki - Winter Exhibitions

Pukeiti: The Living Museum

Opens 14 September 2019

Nestled beneath Mount Taranaki, Pukeiti hosts one of the world's biggest and most diverse collections of rhododendrons and other exotics. Illustrated by Susan Worthington's botanical paintings of large-leaf rhododendrons, this exhibition explores the landscape, history and plants of Pukeiti, and the conservation efforts of a garden as a living museum.



Ko Taku Poi Te Manu - Ongoing

In Taranaki, poi interwoven with hand, karakia and waiata are one. The message carried is complete as it delivers pivotal documents in the form of oral literature to each generation. *Ko Taku Poi Te Manu* shares a glimpse into the powerful and poetic taonga of poi manu. This exhibition honours the words and works of the women and men who have protected and carried it through to today.

Hāpai: Celebrating Taranaki Artists - Ongoing

Hāpai, meaning to 'uplift', 'elevate' or 'support', embodies Puke Ariki's vision of building strong relationships with community groups in our region. This gallery space is a platform for local artists to be seen and recognised for their creativity. Watch this space change every four months as we celebrate different artists' achievements. *Wash Cycle (2019) Ché Rogers (New Plymouth)*

Whare Kahurangi: 100 Years of Collecting

Until 6 October 2019

Whare Kahurangi celebrates 100 years of collecting our region's history, from the foundation gift of Māori taonga by William Henry Skinner through to the present day. For a full list of lectures, school holiday programmes, events, workshops and regular groups, please visit the website.

Puke Ariki, 1 Ariki Street, New Plymouth | Phone: 06 759 6060
Website: www.pukeariki.com | Facebook: Puke Ariki: Museum-Library-Visitor Information



North Taranaki Arts Society Exhibition

Smalls Exhibition

22 September - 3 November 2019

Mystery Envelope Creative Response: Photography Club & NTAS

10 November - 29 December 2019

Gables Gallery, Brooklands Park Drive, New Plymouth
Open: 1.00 pm – 4.00 pm Friday – Monday



Painting by Tevita Latu

Koru Galleries News

Koru on Devon: Tasman Toyota Koru Galleries Exhibition

6 – 8 September 2019. Opening Event: 5.00pm Friday 6 September 2019

Artists include Koru Collective and guest artists Hayley Hamilton and Deb Fuller

Koru on Devon: ASD Connex

21 September – 17 October 2019

Fundraising exhibition in support for children with Autism Spectrum Disorder.

Artists include: Tevita Latu, Theresa Tongi, Arohanoa Mathews and Jolene Stockman.

Koru on Devon: Taranaki Garden Festival Exhibition

1 – 28 November 2019

Wayne Morris, Margaret Irving, Hayley Hamilton, Deb. Fuller.

Koru on Koru 283 Koru Road, Oakura | Open: Weekends 10.00am – 4.00pm

Koru on Devon, 89 Devon St West, New Plymouth | Open: Weds – Sunday 10.00am – 3.30 pm

Contact: Fay Looney 021 410 030 | Facebook: Koru on Koru/Koru on Devon



The Big Idea

The Big Idea is an online hub for artists of all genres. The Big Idea provides you with daily news updates, the **latest jobs and opportunities**, **events** as well as **ideas and inspiration** from across the creative industries to help you create your own success. With over 50,000 members; 1.4 million page views, over 26,000 social media followers and 1.8 million email newsletters sent each year, they are the largest, and the leading online resource for the arts in New Zealand and the most effective place to advertise opportunities.

Website: www.thebigidea.nz



Would you or your group like to have information included in the next *State of the Arts*? Please send concise text and photographs for the Summer (December, January, February) *South Taranaki Arts Bulletin* to:

Michaela Stoneman, Arts Co-ordinator: michaela.stoneman@stdc.govt.nz

Send information by: Wednesday 14 November 2019

Publish date: Friday 29 November 2019

If you would like to unsubscribe to *State of the Arts*, please [email Unsubscribe](#) in the subject line.



South Taranaki

Alive with opportunity