

Te Tohu a Toi

STATE OF THE ARTS

South Taranaki Arts Bulletin # 53

Summer 2023/24

| [Art News](#) | [Opportunities](#) | [Exhibitions](#) | [Art Events](#) |

Welcome to our Summer edition of *State of the Arts*.



This week marked the culmination of two public art projects by Te Paepae o Aotea and collaborators within the Hāwera CBD.

I helped students install posters created during a Street Art unit rolled out for art classes over the year. The bold and colourful artworks bring vibrancy to the construction fence of the new STDC Te Ramanui o Ruapūtahanga building. The project is a good example of how ephemeral artworks can enhance semi-permanent structures. A new mural on the Te Runanga o Ngāti Ruanui Trust building on Princes Street is a huge achievement for young artists and a valued contribution to our cultural and artistic landscape. Ngā mihi nui to all involved in these projects, your vision and artistic expression are much appreciated.

Two new public murals are planned to be executed this summer in Pātea and Eltham. All of these efforts brighten our communities and create opportunities for engagement and celebration.

Last night we hosted Whirimako Black at Everybody's Theatre in Ōpunakē, as part of the National Arts on Tour NZ show. The audience thoroughly enjoyed the performance by Aotearoa's 'undisputed soul diva'. Many thanks to the amazing team at the Theatre for providing this facility. The performers were very grateful for the manaakitanga offered in Ōpunakē at the end of a month-long tour.

I attended Creative New Zealand's 'Nui te Korero' conference in New Plymouth recently, a valuable opportunity to connect with arts workers from around Aotearoa. CNZ has announced its new programmes for 2024, including eight new funding and support opportunities that are tailored to three distinct groups. This will replace the contestable grants programme and is a welcome and necessary improvement created directly from consultation and feedback from the arts community.

Please continue to support our galleries, groups, projects and events. Thanks for your positivity, strength, commitment and vision to keep the arts alive and thriving. Feel free to get in touch with me via email if you need advice or support with funding applications or help to realise a creative project. Stay safe and happy over the holiday period – all the best for the summer season!

Ngā mihi, *Michaela*

Michaela Stoneman | Arts Co-ordinator | South Taranaki District Council | 0800 111 323
michaela.stoneman@stdc.govt.nz | www.southtaranaki.com



South Taranaki Creative Communities Funding

The last application round for the South Taranaki District Creative Communities Scheme (CCS) was well subscribed with a total of \$44,869 requested in funding. The South Taranaki CCS Committee is comprised of representatives from South Taranaki Community Boards, our local arts community, Iwi and Youth. A total of \$19,702.86 was allocated to support these projects:



- Andre Manella - Turkey The Bird Goes Brass:** South Taranaki music performances featuring Hāwera Brass - \$3,000
- Matatuhi Taranaki Literacy Society Inc:** Launch of literature book of writers from Patea & surrounds - \$755
- Jasmine Jones - For My Wairua: Open Mic Poetry Nights:** Supporting poetry reading nights in South Taranaki - \$1,100
- Waverley Primary School School Production:** Support for biennial whole school production - \$2,000
- Village Gallery Public Mural Project:** Replace the mural on the King Edward Street side of the Gallery building - \$1,000
- Pātea Historical Society Mural Project:** A new mural in Pātea to reflect the history and environment of Pātea - \$1,000
- Laura Buchanan - Waiinu Wave Wairua:** Workshops to make pottery pinch pots - \$893.90
- Taranaki Singer Songwriter Development Trust:** To run Singer Songwriters Events in Hāwera & Ōpunakē - \$2,500
- Taranaki Timebank - Upsewing South Taranaki:** Creativity using reclaimed textiles and learning sewing skills- \$4,902
- Trish Kelly:** Support to run screen printing workshops at Pihama Lavender - \$769.96
- Petunia Twala - Afro Dance Workshop:** Dance workshops for youth children at Hāwera Community Centre - \$1,240
- Ōhawe Creative Community:** Exhibiting local art and craft during the Taranaki Arts Trail and Garden Festival - \$542

This year we also received \$10,000 from Creative NZ to allocate towards festivals within the district. \$5,419.25 has been allocated to the projects below, with \$4,580.75 still available for allocation between now and April 2024:

- Zeal Education Trust Taranaki:** Youth-led festival of music and dance in Ōpunakē - \$1,542
- Paepae in The Park:** A free music festival in the Pātea community to celebrate and commemorate Waitangi Day - \$2,360
- Waverley Summer Jam:** A free music and arts festival showcasing local artists and community - \$1,517.25

The South Taranaki Creative Communities Scheme provides funding assistance for community-based arts activities in South Taranaki that meet one or more of the following funding criteria:

- **Broad community involvement** - A project that will create opportunities for local communities to engage with and participate in arts activities.
- **Diversity** - A project that will support the diverse arts and cultural traditions of local communities, enriching and promoting their uniqueness and cultural diversity.
- **Young people** - A project that will enable and encourage young people (under 18 years) to engage with and actively participate in the arts.

The next South Taranaki District Creative Communities application round will open in February 2024.

If you have an idea for a project or would like support with your application, you can email STDC Arts Coordinator Michaela for support – michaela.stoneman@stdc.govt.nz

For detailed information and forms, please visit the link [here](#)

Any enquiries to discuss an application, email funding@stdc.govt.nz or phone 0800 111 323 or 06 278 0555



Arts in the Park

10.00 am - 3.00 pm Saturday 2 December 2023

King Edward Park, High Street, Hāwera

A record number of artists and groups have registered to take part in Taranaki's premier outdoor arts and crafts festival this year. Enjoy the large, pleasant, open environment of King Edward Park to browse arts and crafts. If you are looking for that perfect Christmas gift or a new piece of art, then this is just the day for you. With everything from handmade jewellery to garden art, woodturning to knitting, there is sure to be something for everyone. *Arts in the Park* offers an entertaining day for the whole whānau, offering an opportunity to support local artists and craftspeople. Stalls with various homemade arts and crafts will be scattered throughout the park along with

a variety of food trucks and entertainment. Have a seat, pick up something to eat and soak up the vibe. Check STDC's Facebook page for updates.

For more information contact South Taranaki District Events on 0800 111 323 or email events@stdc.govt.nz

Free Summer Events in South Taranaki

Sounds on the Sand: Ōpunakē Beach: 13 January 2024

Concert in the Park: King Edward Park, Hāwera: 20 January 2024

Paint Party: Hicks Park, Hāwera : 3 February 2024

AmeriCARna Ōpunakē: Ōpunakē Beach : 21 February 2024

AmeriCARna Hāwera: High Street, Hāwera: 23 February 2024

Check the STDC website or Facebook for details on these popular summer events

Contact Ella Tosland, Events Co-ordinator: 0800 111 323 or Email: events@stdc.govt.nz



Lysaght-Watt Trust Ronald Hugh Morrieson Literary Awards 2023



The Lysaght-Watt Trust Ronald Hugh Morrieson Literary Awards were held on 26 October in Hāwera. This year's judges, Emma Hislop, Mikaela Nyman and Matt Rilkoff, shared their thoughts on the overall calibre of entries, along with comments about each winning piece of work. The judges noted the works were very grounded in the South Taranaki landscape and, in some instances, brought Morrieson right back into the room. Category winners are:

Short Story - Open Section

1st: Pip Harrison, Hāwera **2nd:** Bruce Finer, Hāwera **3rd:** James O'Sullivan, New Plymouth

Short Story - Secondary School Section

1st: Catherine Hurlly, Taranaki Diocesan School for Girls **2nd:** Shaneya Patel, Te Paepae o Aotea **3rd:** Lauren Kalin, Te Paepae o Aotea

Poetry - Open Section

1st: Maria Taylor, Stratford **2nd:** Maria Taylor, Stratford **3rd:** For my Wairua, Pātea

Commended: Christine Cameron, Hāwera; Maakere Edwards, Hāwera; Graeme Woller, New Plymouth; Dave Lee, Hāwera; Willow Noir, Hāwera

Poetry - Secondary School Section

1st: Zoe Kruse, Ōpunakē High School **2nd:** Aria Brophy, Ōpunakē High School **3rd:** Bethany Gyde, Te Paepae o Aotea

Commended: Aria Brophy, Ōpunakē High School; Shaneya Patel, Te Paepae o Aotea

Research Article

1st: Stacey Lodge, Taranaki Diocesan School for Girls **2nd:** Ella Butterworth, Sacred Heart Girls College

3rd: Oliver Marsh, New Plymouth Boys High

A copy of the finalist's winning entries can be found in the *2023 Ronald Hugh Morrieson Literary Awards Finalist Book*.

Copies are for sale from any South Taranaki LibraryPlus for \$5.

[Visit the website for more information](#)

Hāwera Skatepark Design Project

Te Hāwera Community Board recently installed a new public art project at Hāwera Skate Park, featuring a bright wall of original artworks on skateboards by local artists.

The opportunity was put out to all schools and the wider public to create a design for a skateboard-shaped artwork. The project was generously supported by Zodiac Signs for sponsorship and printing and fabricated the designs and Hāwera Resene kindly donated the paint. To celebrate the project, Te Hāwera Community Board sponsored 'The Great Skate' event in October. Run by Zeal Youth for Youth, the event featured competitions, hip-hop music, pizza and giveaways. Te Hāwera Community Board Chair Nikki Watson says "We were thrilled to hear that our skate park won the recent online voting competition sponsored by Schick NZ and as a result, the basketball hoop will be getting an upgrade soon".



Taranaki National Art Awards 2023

The Taranaki National Art Awards celebrated 21 years in 2023, a huge achievement for the coastal South Taranaki town of Ōpunakē. Attracting 360 entries from all over New Zealand, the exhibition showcases diverse works in seven categories, competing for a prize pool of over \$16,000. Judges for 2023 were Professor Robert Jahnke and Taarati Taiaroa.



2023 Painting Award

First Prize: Che Rogers, New Plymouth

HC: Reyna Henderson, New Plymouth

2023 Taranaki Artist Award

First Prize: Jasmine Middlebrook, New Plymouth (*pictured below*)

Highly Commended: Waldo Hartley, New Plymouth

2023 3D Award

First Prize: Jonathon Campbell, Lower Hutt

Highly Commended: Marion Courtille, Napier

2023 Works on Paper Award

First Prize: Deborah Morris, Te Awamutu

Highly Commended: Pat Greenfield, New Plymouth

2023 Fibre Art Award

First Prize: Jeanette Verster, New Plymouth

Highly Commended: Catherine Parkinson, Te Awamutu

2023 Tō Taranakitanga Award

First Prize: Jordan Quinnell, Palmerston North (*pictured above*)

Highly Commended: Reeve Hokopaura, Hāwera

2023 Photography Award

First Prize: Lara Gilks, Wellington

Highly Commended: Jill Fearn, New Plymouth

2023 Committee Choice Award: Troy Wood, Inglewood

2023 Peoples Choice Award

First Prize: Maryanne Shearman,

Highly Commended: Jasmine Middlebrook, *Self Combustion*



Visit the website for sponsors, winners and judges comments:

www.taranakiartawards.co.nz

Facebook: [Taranaki National Art Awards](https://www.facebook.com/TaranakiNationalArtAwards)



Taranaki Arts Trail News

Taranaki Arts Trail celebrated its tenth trail in 2023 and it was a huge success. Thousands of visitors came from near and far to marvel at the creative talent Taranaki has. It's a great opportunity for Taranaki artists to get their work known, locally and nationally, through the trail's extensive promotions and the annual event every spring.

TAT AGM: 5.30 pm 12 December 2023, The Plymouth Hotel, New Plymouth

The TAT Committee encourage all artists and art enthusiasts to get involved - please RSVP if you are keen to attend. After four years as TAT Chair, Heidi Griffin is stepping down to concentrate on her own work. A secretary will be needed along with new committee members, as a few of our dedicated members are also stepping down. Please consider getting involved, it is well worth it.

Taranaki Arts Trail 2024: Registrations Open 1 January 2024: Registration is online through the event website.

The step-by-step form is easy to fill in but don't forget to send in your images and press submit at the end.

For more information, contact Niki – Email: taranakiartstrail@gmail.com

Website: www.taranakiartstrail.co.nz

Live Poetry Nights - Hāwera

Friday 22 December 2023

Signs Lounge Bar, Hāwera

Bring your poetry, share it, have a gin and a good night in!

All welcome. Supported by South Taranaki Creative Communities.



For more information contact Jasmine Jones - Email: formywairua@gmail.com

Creative Taranaki News

Creative Taranaki has a new Arts Co-ordinator. Megan Symons from Pihama, South Taranaki has recently been appointed to the role, starting in mid-January 2024. Meg is actively involved in the local arts scene as an organiser, advocate, educator and practitioner. She facilitated *the Arts Academy Programme* at Ōpunakē High School for the past five years, working with youth to pursue their creative passions and to enliven the community through creative projects. A volunteer for the Taranaki National Art Awards for the past decade, she took on the role of Chairperson three years ago, she is involved in all aspects of facilitating this annual event. Megan is keen to connect and build strong relationships in the arts community. "Creative Taranaki will provide opportunities for individuals and organisations to share their voice and vision around what is needed to grow capacity and connectivity - providing support and resources to enable the creative economy to prosper and thrive. I look forward to visiting Taranaki communities, meet people, hear your stories and ideas, and discovering the multitude of modes of creative self-expression that exist around our maunga."



Two new trustees have joined the Creative Taranaki Trust in the past 6 months. Marie Hermo Jensen has a strong background in contemporary dance in Europe and Aotearoa. Since arriving in New Plymouth, she has co-founded *Moving Community*, *Taranaki Contemporary Dance Collective*, *Taranaki Dance Trust*, and *Taranaki Youth Dance Company*. Catherine Anderson Rhodes brings 25 years of experience in the arts, working across public institutions, private galleries and international art events. She is currently a consultant specialising in registration, collection management and writing. They join trustees Andy Bassett, Lisa Berndt, Sam Kelly, Mikaela Nyman and Liz Sinclair.

Chorus Cabinet Art Programme Selections 2023

Earlier this year, Creative Taranaki was invited to partner with Chorus to beautify their cabinets. Two designs were chosen to be painted, by Laura Bell and Ashlee Robinson. You can read more about this programme and see the designs [here](#).

Creative Taranaki Community Kōrero 2024

When Creative Taranaki first began its journey to become Taranaki's Regional Arts Organisation, they ran a series of hui around the region in late 2020 to meet the creative community. A lot has changed since then, so they plan to travel around Taranaki again, to meet artists and groups, put names to faces and gauge what is required to support the arts community. Keep an eye out for locations and dates on Facebook.

For more information and updates - [Facebook: Creative Taranaki](#) | [Website: www.creativetaranaki.org](#)
Email: trust@creativeTaranaki.org



New Mural - Te Paepae o Aotea & Te Runanga o Ngāti Ruanui Trust

Members from our local community and students of Te Paepae o Aotea gathered at Te Runanga o Ngāti Ruanui Trust on Wednesday 29 November to celebrate and bless the final resting place of Ruapūta'anga.

Since July, Year 9 and 10 NCEA Art students have been working with Ngāti Ruanui to complete a mural of Ruapūta'anga. Koro Turangapito and

Matua Hemi shared korero with the students as a springboard for their mural planning. These stories were woven together in consultation with the iwi until a finalised plan emerged. 'Ruapūta'anga stands strong, her arms stretched out toward her iwi, her fiery red hair making her impossible to miss and her paua eyes watching over her extended whanau', Te Paepae o Aotea Head of Art Emily Davidson says. "I am immensely proud of how the students have worked together. This mural is a result of a heartfelt collaboration between our students and Ngāti Ruanui, it has been a privilege to hear first-hand from kaumatua of their love and respect for their precious tipuna. We can only hope they are as proud of the result as we are. Today's blessing has been the perfect chance to celebrate her completion."



South Taranaki Creative Space

South Taranaki Creative Space is a community-focused creative hub in the Hāwera CBD, providing a welcoming space to meet, interact, learn new skills and network with other creative people. The *Community Unity Gallery* is open to anyone wanting to exhibit their art, up to two artworks per artist to two artworks per artist, \$5 koha hanging fee, no commission taken on sales. All welcome, please get in touch to exhibit, join a class or book a workshop. Facilitators: Carl Fairweather and Erryn Willcox.

41 Princes Street, Hāwera

Phone or text: 027 361 6930

Facebook: [South Taranaki Creative Space](#) | Email: southtaranakicreativespace@gmail.com

Paepae in the Park 2024

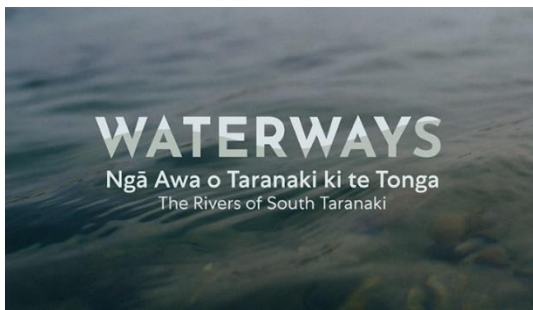
Waitangi Day, 6 February 2024
Memorial Park, Pātea (behind the Aotea Waka)

A free family music festival for all the family, celebrating the Treaty of Waitangi in Aotearoa. Enjoy local musicians and performers, including the legendary Pātea Māori Club. Food and craft stalls support the event, as well as fun activities for kids. Check the Facebook page for updates on performers and schedules.



Facebook: [Paepae in the Park – music festival](#) | Email: paepaeinthepark@gmail.com

Aotea Utanganui Museum of South Taranaki – Exhibitions



Waterways: Ngā Awa o Taranaki ki te Tonga
Runs to April 2024

Maunga Taranaki is the well-spring of our region. From his majestic slopes and the surrounding ranges, flow rivers and streams that stretch across the district into the Tasman Sea. *Waterways – Ngā Awa o Taranaki ki te Tonga* will explore the effects human activity has had on the environment; especially as water is an important resource for industry, agriculture and recreation in South Taranaki. Funded by Taranaki Regional Council.

Aotea Utanganui - Museum of South Taranaki, 127 Egmont Street, Pātea | Phone: 06 273 8354

Facebook: [Aotea Utanganui](#) | www.museumofsouthtaranaki.wordpress.com

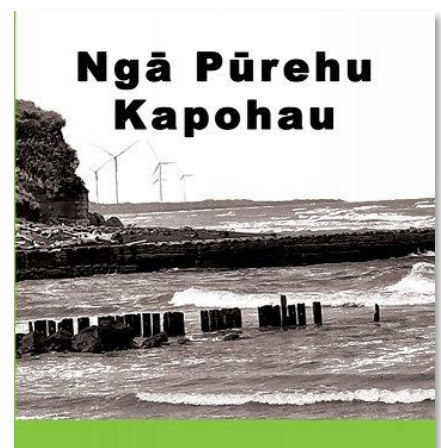
Email: museum@stdc.govt.nz | Open: 10.00 am - 4.00 pm Monday – Saturday

Publication Launch – Ngā Pūrehu Kapohau

Book Launch Event: 1.00 pm – 3.00 pm, Sunday 28 January 2024
Hunter Shaw Building, SH3, Pātea

Ngā Pūrehu Kapohau: A Literary Homage to Pātea, Waverley and Waitōtara is due for launch in January 2024. Described as 'An anthology of over 400 pages of poetry garnered from our local communities.' The volume is co-edited by Dr Vaughan Rapatahana, Ngauru Rawiri and Trevor Landers.

All are invited and welcome at the launch - RSVP by email to: matatuhitaranaki@gmx.com





Gallery Pātea – Summer Exhibitions

Summer Group Exhibition

4 December – 30 January 2024

Gallery Pātea celebrates its seventh anniversary in December and has continued to grow, with generous support from Creative Communities, Toi Foundation, local artists and volunteers. Gallery Pātea features works by artists from Pātea, Whenuakura, Alton and Waverley, and always welcomes new artists to exhibit work and get involved. Featuring artworks in a range of mediums, including acrylics, pastels, wood carving and turning, printmaking, mixed media, jewellery and handmade paper for sale.

Gallery Pātea, 56a Egmont Street, Pātea | Open: 11.00 am - 3.00 pm Wednesday - Saturday or by appointment
For more information text Gabrielle Belz 021 0813 8355 | Facebook: Gallery Pātea | Email gallerypatea@gmail.com

Waiinu Waves - Pottery Workshop

Tuesday 12 & Saturday 16 December, 10.00 am - 12 noon

Tuesday 9 & Saturday 13 January, 10.00 am - 12 noon

17 Pingao Place, Waiinu Beach

Join ceramic artist Laura Buchanan at her home studio to create your own pottery pinch pot that encapsulates waves. Participants will be given 1kg of clay and guidance to create your own bubble - hold it to your ear to hear the waves. Pots will be dried, kiln-fired, and glazed in ocean tones using blue glass melts to create deep hues. Supported by South Taranaki Creative Communities.



For more information or to book, text 027 776 7679 | Facebook: [Lulu Studio Pottery](https://www.facebook.com/LuluStudioPottery)

Lysaght Watt Gallery – Summer Exhibitions

As We See It: Hāwera Art Club

Runs until 9 December 2023

Hāwera Art Club's annual exhibition features new works including a selection of oils, acrylics, watercolours and felt art. The club welcomes new members of all abilities, meeting at 1.00 pm on the first Friday of the month at the Salvation Army Hall in Hāwera. There is a further informal group that meets at the same venue on the other three Fridays each month at 10.00 am. All enquiries to Cheroil Filbee, email: icemaideen1@orcon.net.nz

Art for Xmas: Group Exhibition

11 - 23 December 2023

A short exhibition over 13 days that offers a selection of arts and crafts suitable for Christmas gifts.

Lysaght Watt Gallery committee and volunteers will take a short exhibition break for the Christmas/New Year period.

Lysaght Watt Gallery Members/Emerging Artists: Group Exhibition

8 January - 3 February 2024

Two exhibitions showcasing members' artwork alongside young and emerging artists from Taranaki and Manawatu. Includes oils, acrylics, printmaking, drawings, photography, felting and paua art.

805°: Rosalind Fitz Patrick

5 February - 3 March 2024

Whanganui fused glass artist and Supreme winner of the Lysaght Watt Trust Art Award 2023 exhibits recent works. Rosalind, a graduate of the *Diploma in Art & Design (2019)* at UCOL, fell in love with the fused glass method and set up her own studio following graduation. A background in the fashion manufacturing industry instilled precision into the artist's endeavours and now extends to the fused glass art she creates today. The exhibition focuses on geometric designs and rich colour palettes in the standalone glass pieces and delicate wall hangings that combine chains and glass.



Lysaght Watt Gallery 4 - 6 Union Street, Hāwera

Website: www.lysaghtwattgallery.co.nz | Facebook: Lysaght Watt Gallery

Hāwera Repertory News

A Christmas Crack Up

Runs until 9 December 2023

Repertory House, 59 Collins Street, Hāwera

Presenting an end-of-year production of an assortment of one-act plays: *The Morning After*, a sequel to *Gingernuts* written by Carole Hosie; *Stormy Weather*, written by Cheroil Filbee; and *An Almost Correct Christmas Story*, a light-hearted twist on the nativity written by James O'Sullivan. Venue and bar opens at 6.45 pm, show starts at 7.30 pm.

Tickets - \$35 from [iTicket](#) - includes dessert platter at interval. Wheelchair seating available - book through South Taranaki i-SITE, 06 278 8599.

For more information contact hawerarepertory@gmail.com or visit www.hawerarep.org



Taranaki Singer Songwriters Events 2024

Taranaki Singer Songwriters hosts events where local songwriters and musicians entertain local audiences – and they are coming to South Taranaki next year. If you play music, write your own songs, want to become more confident on stage or meet up with other musicians then this event is for you. Come along and perform your original or favourite songs. All ages, genres and styles are welcome. If you like to listen to live original music we'd love you to come and join the audience. These are free events in a safe, welcoming and nurturing environment. South Taranaki events will be hosted at Hāwera Repertory Theatre and Lakeside Playhouse Ōpunakē from April - October 2024

– supported by South Taranaki Creative Communities. Keep an eye out for updates on Facebook.

For more information contact manellaproductions@gmail.com | Facebook: [Singer Songwriters New Plymouth](#)

The Village Gallery – Summer Exhibitions

All in Together: Members of the Village Gallery

Until 16 December 2022

Christmas Exhibition by Members of The Village Gallery. The exhibition is 'cash and carry', a great place to purchase locally made Christmas gifts. Includes paintings, wall hangings, pottery, photography, woodware, yarn and fibre items.

The Village Gallery will remain open during the summer break, except for Christmas Day, Boxing Day and New Year's Day. In the new year, the Gallery Committee is changing the front gallery space into the Community Gallery Shop area. This will be an inviting, eclectic, always changing space. The rear gallery will show exhibitions by individual artists and groups.

The committee invite the public to the opening of the new spaces: 4.00 pm Sunday 11 February 2024.

Seven Moments in Time - Solo Exhibition by Todd Pomare

11 February - 8 March 2024

Following the Special Meeting held in November 2023, the gallery committee has two new members. The gallery welcomes more active people on the committee, especially if they have leadership skills, and new *Friends of the Gallery* and volunteers are always welcome. Artists and groups are invited to book exhibitions for 2024. A new mural for the Gallery building has been designed by professional mural artist Dan Mills. Dan has connections with Eltham and will paint his design in February 2024. The dynamic design which features Lake Rotokare as the theme, will be a vibrant and highly visible addition to Eltham. Supported by STDC and South Taranaki Creative Communities.



The Gallery Shop offers Members an opportunity to display their items throughout the year. Cards, prints, paintings, pottery, photographs, jewellery and more.

The Village Gallery, 166 High Street, Eltham
Winter hours: Tuesday – Friday 10.00 am – 3.00 pm. Saturday 10.00 am – 3.00 pm. Closed Sunday and Monday.
Facebook: [Village Gallery Eltham NZ](#) | Email: villagegalleryeltham@gmail.com



from out of the blue studio gallery

Waymarkers - Into the Unknown: Toni Hartill

Until 17 December 2023

Through richly layered markmaking, artist's books, dioramas, structures and assemblages, with an acute attention to detail and use of materials, Toni Hartill explores a visceral sense of belonging to the landscape of Aotearoa. Toni will be doing a six-week residency at the gallery throughout her exhibition. Visit the website for updates on artist's talks, demos, workshops and gatherings.

The Beach - A Summertime Collection

21 December 2023 - 29 January 2024

An open-call collection of fibre works that record an encounter with a real or imagined beach.

Sustainable Creativity - Stellar Quilt Group

1 February - 11 March 2024

Stellar Quilters was formed after a Nancy Crow workshop, held at Stella Maris retreat in 2002. The group bonded well during the week-long residential course and decided to keep going - 20+ years later they still meet, exhibit and grow. This exhibition focuses on sustainability; how we covet, obtain and then use our fabric to create lasting pieces. 'As individuals, the arts can understand our activities have a cumulative global impact. We have the choice to imagine new and exciting ways to bring sustainability into our quilt making.' Featuring quilts by Kay Booth, Bobby Duncan, Merrilyn George, Jenny Hunter, Sheryl Meech, Anna Prussing, Dianne Southey, Michelle Sutherland and Carol Walter.

Contact: Viv Davy. Phone: 021 407 424 | 18 Halse Place, Ōpunakē

Website: www.fromoutofthebluestudiogallery.com | Open: 1.00 pm – 5.00 pm Thursday – Monday or by appointment

Facebook: [from out of the blue studio gallery](https://www.facebook.com/fromoutofthebluestudiogallery) | Instagram: [threadthinker](https://www.instagram.com/threadthinker) | Email: silktangles@me.com

Botanical Art & Plant Weekend Pop-up

10.00 am - 4.00 pm Saturday 9 & Sunday 10 December 2024

Forbes & Flay, 40 Tasman Street, Ōpunakē

A one-time only event – original art, prints and plants for sale.



Everybody's Theatre - Ōpunakē

A historic theatre restored to its former glory. In addition to all the latest new releases, the theatre also hosts boutique nights, playing a selection of classic, foreign and fringe films. Check the website for screening and special events. Bookings can now be made online. The theatre hosts special events and can be hired

Boutique Nights – 7.00 pm, first Sunday of the month

Sunday 3 December 2023: *One Life*

Everybody's Theatre, 72 Tasman Street, Ōpunakē | Phone: 027 383 7926

Website: www.everybodystheatre.co.nz | Email everybodystheatre@gmail.com

Screen-Printing Workshop for Youth

9.00 am - 12 noon Tuesday 9 January 2024

Pihama Lavender, 3510 South Road, Pihama

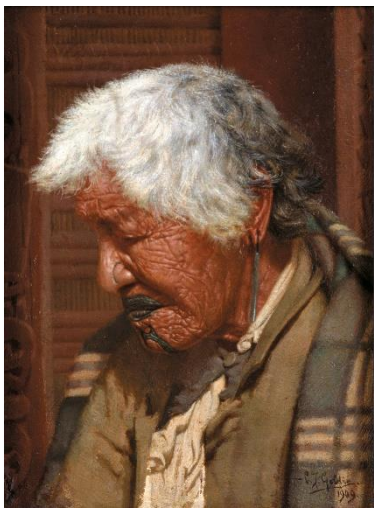
A workshop for youth to learn screen printing skills and techniques.

For ages 8 years and over, \$10 per person, limited numbers.

Supported by South Taranaki Creative Communities.



To register, contact Trish Kelly – Email: pizzapirates@hotmail.com



Percy Thomson Gallery – Summer Exhibitions

Yours Truly x

16 December – 24 January 2024

Curated by Laura Campbell. An exhibition about identity, challenging artists to 'show their true self'; to reveal their point of difference and do so in a safe space. The artist decides whether to look inward and examine themselves in a self-portrait or look outward at the way they view the world through their particular lens – i.e. youth, culture, feminism, LGBTQI+, mental health or the environment.

Gathered Voices: Highlights from the Fletcher Trust Collection.

3 February – 24 March 2024

Curated by Francis McWhannell. A rare opportunity to view one of the most prestigious private art collections in Aotearoa. Twenty-two artworks of national significance by notable artists such as C. F. Goldie, Rita Angus, Tony Fomison, Ian Scott, A. Lois White, Robyn Kahukiwa and more. Only tour stop in Taranaki.

Exhibition Proposals 2025 are now open: Application forms on the gallery website. Open call, proposals received until mid-December 2023.

For gallery newsletters, member benefits, invitations to events and exhibition openings, sign up as a Friend of the Gallery.

Percy's Place is the gallery's boutique art shop, full of creations by local artists. The Gallery is seeking volunteers to assist with running the shop - please contact the Gallery if you are keen to help.

Percy Thomson Gallery, 56 Miranda Street, Stratford | Director: Laura Campbell | Phone 06 765 0917

Open: Monday - Friday 10.00 am - 4.00 pm. Saturday - Sunday 10.00 am - 3.00 pm

Website: www.percythomsongallery.org.nz | Facebook: Percy Thomson Gallery

Puke Ariki - Summer Exhibitions



Kount Five Plus Two – Pop Culture in Retro Taranaki 1966-1983

9 December 2023 - 8 June 2024

Temporary Gallery, Ground Floor, Puke Ariki Museum

Opening Celebration Event: Saturday 9 December, 5.30 pm – 7.30 pm

What do you know about the 1970s? What do you remember? Kount Five Plus Two exhibition invites visitors to step back into retro Taranaki and take a nostalgic ride through the local music scene in this pop culture extravaganza. Originally from Stratford, Kount Five Plus Two was an iconic Taranaki covers dance band, playing regular dances, cabarets and at hotels. With five men and two women, the band played regular nights at the Westown Motor Hotel. Follow Kount Five Plus Two as they started out playing country dances in the 1960s, backing famous celebrities of the era, to the Ōpunake Mardi Gras and Bowl of Brooklands in the 1970s and a taste of the 1980s as the band finished up their regular Hotel spots. Discover what was big on the radio, try on the clothes you used to wear, break out your dance moves for the light-up floor and share laughs and nostalgia as you explore your memories with the whole family.

Puke Ariki, 1 Ariki Street, New Plymouth | Phone: 06 759 6060 | Open: 10.00 am - 5.00 pm 7 days | Free Entry

Website: www.pukeariki.com | Facebook: Puke Ariki: Museum-Library-Visitor Information

Quirky Fox – Art + Framing

Eloquent Allegory

Opens 17 January 2024

Quirky Fox starts the year with a three women group show showcasing the eloquent and balance of nature. Heather Denison, Melinda Jane (*pictured right*) and Anna Gibbs all have distinct styles and mediums but all produce photorealistic birds and mammals with a distinct flair of their own.

Quirky Fox, 205a High Street, Hāwera | Phone: 06 278 6909

Open: Monday - Friday 10.00 am - 4.30 pm Saturday 10.00 am - 12 noon

Facebook: Quirky Fox: Art & Framing | Website: www.quirkyfox.co.nz



Gover Street Gallery – Exhibitions

Until 23 December 2023:

Ans Westra Private Collection Exhibition

David Rogers Revolving Exhibition Wall

Nga Takutai - The Coast: Korrena Kidd Solo Exhibition

Brett Williams: Local Landscapes and Abstracts

Anne Holliday: A Discomforting World

8 January - 4 February 2024: *Melissa Lovegrove Exhibition*

1 - 29 February 2024: *Dorothy Andrews Exhibition*

19 Gover Street, New Plymouth | To exhibit, register, enquire, contact Heidi on 06 757 4278

Open: Monday – Saturday 10.00 am – 4.00 pm. Closed Tuesdays. Sunday 12 noon – 4.00 pm until Christmas.

Facebook/Instagram: [Gover Street Gallery](#) | Email: goverstgallery@gmail.com

Fenton Street Art Collective - Exhibitions

Party of Three – The Watersons: From 1 December 2023

A creative family showcase their collective talents in painting, sculpture and wood. Fenton Street Arts Collective will close for the statutory holidays.

Sketch'd to Complete: From 18 January 2024

An exhibition by the Fenton Street Life Drawing group.

Soulmates – Bronwen Key: From 23 February 2024

A new exhibition of cheeky characters from the animal world.

11 Fenton Street, Stratford | Facebook: [Fenton Street Art Collective](#) | Email: fentonartscollective@gmail.com

Open: 9.00 am – 2.00 pm Monday – Saturday, 10.00 am – 2.00 pm Sunday | Phone: 021 0299 2839



The Learning Connexion School of Creativity and Art (TLC)

An art school established 32 years in Lower Hutt (Wellington region), TLC is New Zealand's only education provider fully dedicated to teaching creativity processes. Programmes can be taken on-site or via distance learning. Many artists from Taranaki have trained through TLC. Students at TLC can gain NZQA qualifications in creativity. The New Zealand Certificate in Creativity (NZQA Level 4) is open entry and provides a pathway to the Diploma Level 5 and 6 qualifications.

TLC Newsletter - Stay in the loop of our art exhibitions, classes and events. Sign up [here](#).

**Any questions or for further information, phone 0800 278 769 or
Email admissions@tlc.ac.nz**

Creative New Zealand – News

Creative New Zealand is the national arts development agency developing, investing in and advocating for the arts.

Creative New Zealand recently announced its new programmes for 2024. The eight new funding and support opportunities are tailored to three distinct groups: early career artists, artists and practitioners, and arts groups and organisations and will replace the existing contestable grants programme. “We’ve listened to the arts community and heard the calls for fundamental change,” Gretchen La Roche, Senior Manager, Arts Development Services said. “We’ve moved from a ‘one size fits all’ approach

to accessible, focused, fairer support with broader opportunities for artists, arts organisations, and artists at an early stage of their career,” she said. Creative New Zealand held 24 workshops between March and April this year and sought feedback from the sector. “As a result of talking and listening to the sector, we’ve moved from a focus on investing in projects to investing in people. These changes have been made to support artists to be able to take more risks. We want to provide greater flexibility for artists who we know need different things at different times.”

The eight new programmes acknowledge the uncertainty that artists and arts organisations often operate within. The change in focus flows through the programmes, with an emphasis on vision and purpose, valuing artists’ time, supporting longer-term development and building relationships with artists and organisations outside of funding.

Visit [Funding and support](#) for more information. [Sign up](#) to receive news and updates via email.

For updates and information on all Creative NZ funding, visit the [website](#)

[Ōpunakē Open Studios & Galleries](#) – *click to follow link*

[Coastal Art Trail](#) - *click to follow link*



The Big Idea

The Big Idea is an online hub for artists of all genres. The Big Idea provides you with daily news updates, the latest jobs and opportunities and events as well as ideas and inspiration from across the creative industries to help you create your own success. The Big Idea is the largest, leading online resource for the arts in New Zealand.

Website: www.thebigidea.nz

Would you or your group like to have information included in the next edition of
Te Tohu a Toi – STATE OF THE ARTS?

Please send concise text and photographs for the Autumn Edition (March, April, May 2024) to:
Michaela Stoneman, Arts Co-ordinator: michaela.stoneman@stdc.govt.nz

Send information by:

Monday 19 February 2024

Publish date:

Friday 1 March 2024

To unsubscribe to *State of the Arts*, please [email Unsubscribe](#) in the subject line.

