

Te Tohu a Toi

STATE OF THE ARTS

South Taranaki Arts Bulletin # 46

Autumn 2022

| [Art News](#) | [Opportunities](#) | [Exhibitions](#) | [Art Events](#) |

Welcome to our Autumn edition of *State of the Arts*. As we move into another year, we've all been navigating the new Covid systems and situations to keep our families and communities safe. The ongoing strain and impact on our creative sector, with the cancellation of events, performances and dwindling audiences at galleries, will be felt for some time to come. Hang in there people! The key is to stay connected and look after each other.

Despite these challenges, it is heartening to see our some exciting new creative developments emerge throughout the district recently. The **South Taranaki Creative Space** is launching their **Community Unity Gallery in March**, offering low cost exhibition space to all artists. This is a great addition to the kids and adult art classes they provide in their creative space opposite Pak'n Save in Hāwera. **Tantrum Art Studio** has opened in Manaia, offering an authentic experience to meet a local artist and see works in progress and **Gallery Pātea** has a great new upgraded hanging and lighting system to enhance their space and displays.

A new seat has been installed recently at The Garden of Tutunui public sculpture in Pātea. The sculptural seat was handcrafted by Kakaramea artist Mike Cole, from locally harvested macrocarpa. The design reflects the curves of the whale bone sculpture by Kim Jarrett, replacing the original fibreglass and steel swing, which was removed due to ongoing damage and health and safety concerns. The seat is a popular meeting spot for local youth and an awesome spot for visitors to get a great photo. This project is a great example of the benefits of commissioning local skilled artists to create bespoke work using local resources, resulting in a unique and functional addition to this iconic sculpture in Pātea.



I am pleased that we are able to offer a fantastic workshop series **Business Skills for Creatives** for our creative community in May this year, an awesome opportunity for creative people in South Taranaki to upskill.

The Ministry for Culture and Heritage's **Cultural Sector Emergency Relief Grant for Self-Employed Individuals** has just launched, to enable one-off grants of \$5,000 available to self-employed people working in arts, culture or heritage whose income has been directly affected by the move to 'Red' under the COVID-19 Protection Framework. Applications open this week, [check this link on the MCH website](#) for full details and forms.

Please continue to support and enjoy our local artists, galleries, groups, projects and events. Thank you for your positivity, strength, commitment and vision to keep the arts alive and thriving. Get in touch with me via email if you need advice or support with applications or help to realise a creative project. Take care and keep creating!

Ngā mihi, *Michaela*

Michaela Stoneman | Arts Co-ordinator | South Taranaki District Council |
0800 111 323 michaela.stoneman@stdc.govt.nz | www.southtaranaki.com

South Taranaki Creative Communities Funding

Do you have a community arts project that needs some funding support? The current round for the South Taranaki Creative Communities Scheme (CCS) opened in February 2022. Comprised of representatives from local Community Boards, our local arts community, Iwi and Youth, the CCS committee meets twice a year to allocate funds to creative projects throughout the district.



The South Taranaki Creative Communities Scheme provides funding assistance for community-based arts activities in South Taranaki that meet one or more of the following funding criteria:

- **Broad community involvement** - A project that will create opportunities for local communities to engage with and participate in arts activities.
- **Diversity** - A project that will support the diverse arts and cultural traditions of local communities, enriching and promoting their uniqueness and cultural diversity.
- **Young people** - A project that will enable and encourage young people (under 18 years) to engage with and actively participate in the arts.

Applications for funding close at 5.00 pm Wednesday 9 March 2022, for projects that take place between 8 April 2022 and 9 April 2023. If you have an idea for a project or would like support with your application, you can email STDC Arts Co-ordinator Michaela – michaela.stoneman@stdc.govt.nz

For detailed information and forms, please visit the link [here](#)

Any enquiries to discuss an application, email funding@stdc.govt.nz or phone 0800 111 323 or 06 278 0555

Business Skills for Creatives – South Taranaki Workshops



WHEN: 10.00 am - 2.00 pm Fridays 6/13/20/27 May 2022

WHERE: Online - will need access to internet and Zoom

COST: \$40 per person - limited to 15 participants

South Taranaki District Council are offering a four-week online workshop and mentoring series to creatives throughout the district in May 2022. Facilitated by Business Development Manager Scott Willson and Arts Co-ordinator Michaela Stoneman, the workshops will be delivered by experienced tutor Janet Nixon, through the online Zoom platform. Nixon is a small business trainer, coach and mentor, with 22 years experience teaching small business in the arts at many tertiary

institutions in New Zealand. She was a business mentor with Business Mentors New Zealand and the Emerging Artists Trust (EAT) working with creative business owners.

Business Skills for Creatives offers online strategic planning and marketing workshops to South Taranaki creatives. The workshop series is run in weekly 4x four hour sessions (total 16 hours), delivered on Zoom to up to 15 participants.

Session 1: Strategic Planning for Creative People

This workshop is ideal for artists and arts groups wanting to get clear on where they're heading, how they are going to go about it, and what their goals are. Participants will create objectives and form an action plan.

Session 2: Project Planning for Creative Activities

All successful projects have a good plan. Learn about project planning and start putting together a solid plan for your project, including defining your project, creative timelines and learning about resources and budgets.

Session 3: Promoting Your Creative Work - Part 1

Learn how to promote effectively to make your creative practice and projects a success. Includes setting goals for promotional outcomes, identifying target markets, outlining key messages and how to price your work.

Session 4: Promoting Your Creative Work - Part 2

Includes creating a marketing campaign, mapping out media, using project management skills to create a marketing timeline and using social media successfully in your arts business.

The course also offers a one-on-one **Mentoring Opportunity** for participants, to focus on specific goals or challenges.

Business Skills for Creatives is subsidised by South Taranaki District Council to assist our local creative community to develop new skills and build capacity.

Registration Opens: Wednesday 9 March 2022

Contact: Michaela Stoneman, Arts Co-ordinator – michaela.stoneman@stdc.govt.nz or Scott Willson, Business Development Manager – scott.willson@stdc.govt.nz. Phone 06 2780555/0800 111 323

Arts on Tour – South Taranaki 2022



Albi and the Wolves

Thursday 12 May 2022

Doors open 6.30 pm, show starts 7.00 pm

Kakaramea Hall, SH3, Kakaramea (6 km north of Patea)

Albi and the Wolves return to South Taranaki stages to fill hearts with hope with their energetic and relatable alternative indie-folk songs. Chris Dent, the proud albino front man Albi, Pascal Roggen and Michael Young have crafted a stage show that's brimming with energy and moments to pause for reflection. The trio has a huge sound, created by acoustic guitar, electric violin, double bass and vocals. The award-winning band have a great sense of community, connecting audiences through dance, laughter and singing, making people want to come back for more.

Tickets \$10 per person, limited to 100 tickets. Purchase from Pātea LibraryPlus or South Taranaki i-SITE, Hāwera

Ministry of Culture & Heritage – Covid Funding Support

The Government is providing two schemes that can provide financial support for self-employed people who have been directly affected by a move to 'Red' under the COVID-19 Protection Framework. Inland Revenue's **COVID-19 Support Payment** is available for self-employed people (and other businesses) who have experienced at least a 40% drop in revenue. The **Cultural Sector Emergency Relief Grant for Self-Employed Individuals** will make a **one-off grant of \$5,000** available to self-employed people working in arts, culture or heritage whose income has been directly affected by a move to 'Red' under the COVID-19 Protection Framework. Self-employed people in the arts, culture and heritage sector will only be able to apply for one of these schemes. MCH strongly recommend that applicants check their eligibility for the Inland Revenue scheme, before commencing an application for the Grant for Self-Employed Individuals.

Follow this link: [COVID-19 Omicron Relief Funding | Ministry for Culture and Heritage \(mch.govt.nz\)](https://www.mch.govt.nz/covid-19-omicron-relief-funding)

South Taranaki Creative Space

South Taranaki Creative Space is a community-focused creative hub, providing a welcoming space to meet, interact, learn new creative skills and network with other creative people. The Creative Space will be opening up its walls as the *Community Unity Gallery* in March. The invitation is open to anyone to show their art, with exhibitions changing monthly. Up to two artworks per artist, \$5.00 koha hanging fee, no commission taken on sales. Make contact on the Facebook page or via email if you would like to show your work. All welcome.



Creative After School Kids Art Classes

Classes cover a wide range of mediums to help young creatives with their artistic development by exploring different ideas and techniques. Designed for students who have a genuine interest and a willingness to learn art and creativity, who are able to attend class on a regular basis.

Monday: 12 - 15 years, 3.30 - 5.00 pm Tuesday: 10 - 12 years, 3.30 - 5.00 pm

Wednesday: 8 - 10 years, 3.30 - 5.00 pm Thursday: 5 - 7 years, 3.45 - 5.00 pm



Creative Adult Art - Beginners: Thursdays 6.30 pm - 8.30 pm

An introduction to a variety of creative mediums. A great class if you are at the beginning of or reawakening your creative journey.

Creative Adults Art - Experienced: Tuesdays 6.30 pm - 8.30 pm

A class for experienced creatives who have the basics covered and would like to expand on what they have already learnt and explore different ideas and mediums.

WORKSHOP: Assemblage & Collage

Saturday 7 May, 10.00 am - 3.00 pm

Join well-known artists Dale Copeland and Carl Fairweather to explore assemblage and collage techniques. The workshop coincides with an exhibition by Copeland at Lysaght Watt Gallery, a visit will be included in the workshop. All materials provided. BYO lunch. Numbers limited to 12, cost per student \$25.

To register, please contact Carl on the email below.

41 Princes Street, Hāwera | Phone or text: 027 361 6930

Facebook: [South Taranaki Creative Space](https://www.facebook.com/southtaranaki creativespace) | Email: southtaranaki creativespace@gmail.com



Tantrum Art Studio – Manaia

Launch Exhibition: *Hello!*

14 - 29 May 2022

Open: 10.00 am - 4.00 pm daily

Tantrum Art Studio is a new artist studio and gallery space in Manaia, founded by Kris Marlianti. A self-taught artist, poet and author, Kris uses acrylic, oil bars, and charcoal on canvas to express her feeling and thoughts. Her paintings are inspired by the rawness of life, human issues, the hidden meaning of life, chaotic things and the dynamics of colour.

Hello! is the theme Kris has chosen for her first solo art exhibition in New Zealand. The purpose of this exhibition is to welcome visitors and introduce her artworks and new studio to Taranaki. Kris will display paintings created in Indonesia as well as recent paintings and works in progress.

30 Ngatai Street, Manaia | Website: www.krismarlianti.com

Email: artist@krismarlianti.com | Instagram: [Krismarlianti](https://www.instagram.com/Krismarlianti)

Hip Hop Dance Classes - South Taranaki

Inspired by the art elements of Hip Hop Dance and Culture, Fusion & Flow are creating opportunities for young people to engage, express and evolve through dance. Family and community-focused, Fusion & Flow offer a safe environment for youth to have the freedom to express in an active learning environment, movement and growth in the arts. Help spread the word to young people that love to dance or just want to try something new in South Taranaki. For ages 5-17 years. Free classes in Pātea and Manaia - supported by South Taranaki Creative Communities.



MANAIA - TERM 1 2022

Thursdays 4.00 pm - 5.00 pm

Manaia School Hall, 36 Karaka Street, Manaia

PĀTEA - TERM 2 2022

Thursdays 4.00 pm - 5.00 pm

Whare Pukeko/ Pātea Youth Trust, 31 Cambridge Street, Pātea

Note: No Classes in Hāwera for 2022

All dancers must be registered.

Registrations for Pātea classes open in the Term 1 school holidays.

For more information, 2022 updates or to register, visit the [Website](#)
Facebook: [Fusion & Flow – Taranaki](#)

Gallery Pātea News

Thanks to support from the Toi Foundation, Gallery Pātea has installed a new lighting and hanging system to enhance displays of local artworks. Upcoming exhibitions feature animal paintings by Teresa Buhler, printmaking by Rosanne Oaks and paintings and stone carving by Bruce Adrian. New works are being added frequently, including a range of quality handcrafts, including pottery, stone and bone taonga, jewellery, kawakawa balms, unframed original prints, cards, harakeke kono and putiputi. Gallery Pātea promotes creativity in the South Taranaki area and urges local artists to bring in their work - bone carvers, stone workers, potters, painters, printmakers, kairaranga and other creative works. Gallery Pātea is a non-profit organisation run by volunteers. If you're keen to exhibit or be a gallery volunteer, please get in touch. A new online shop has been created on the Gallery Facebook page. Thanks to all volunteers, supporters and sponsors.



Stone patu by Bruce Adrian

Gallery Pātea, 56a Egmont Street, Pātea

Open: 10.00 am - 3.00 pm Wednesday - Saturday or by appointment

For more information text Gabrielle Belz 021 0813 8355 | Facebook: [Gallery Pātea](#) | Email gallerypatea@gmail.com

Aotea Utanganui – Museum of South Taranaki



Zoomed In - Until May 2022

A photographic exhibition of our pictorial collection with a 'zoomed in' element. Each photograph depicts a time in South Taranaki history, with enlargements of something of interest for the viewer to see. You will see photographs of yesteryear and have a laugh at some comedic characters with an upbeat outlook on 'capturing that special moment'.

Pātea Bowling Club 125 years - Until April 2022

The Pātea Bowling Club celebrated its quasiquicentennial (125 years) in 2021. The game of bowls has existed for over 800 years; the township of Pātea was established in 1881 and the bowling club was officially formed in 1896. Throughout the years, the club has adapted and grown, reaching peak membership in the late 1970s. The Pātea Bowling Club continues today, and members still compete on the original green at the end of Meredith Street.

Pouaka Kōrero – Talking Box 2021

Aotea Utanganui presents this Taranaki Regional Council (TRC)-funded project to the South Taranaki community. *Pouaka Kōrero – Talking Box* is a series of mini-documentaries about our wonderful and diverse part of the country we call home. Historical and contemporary, these documentaries encompass people who have contributed to the region; who have enhanced our district with their passion and are ordinary people doing extraordinary things. The Museum will be screening mini-documentaries the team have created with help from Keith Finnerty (Cat and Mouse Television) and the many interviewees who made this project possible.

Aotea Utanganui - Museum of South Taranaki, 127 Egmont Street, Pātea | Phone: 06 273 8354

Facebook: Aotea Utanganui | www.museumofsouthtaranaki.wordpress.com

Email: museum@stdc.govt.nz | Open: 10.00am - 4.00pm Monday – Saturday



Lysaght Watt Gallery – Autumn Exhibitions

Playful: Narratives of Three Glass Artists: Karin Barr, Graeme Hitchcock, Carmen Simmonds

The Silk Road - Sandy de Kock

7 March - 2 April 2022

Three contemporary glass artists showcase diverse practices, formulating ideas through their love of kiln-formed glass and the opportunity for playful experimentation. These artists have produced three individual narratives that demonstrate the immense versatility of cast glass, the artist's freedom to 'mix it up', and skills developed from years of experience within the discipline of glass.

Sandy de Kock creates dynamic paintings inspired by visions of the exotic Silk Road.

It Takes Two: Jeanette Vester and Suzan Kostanich

4 - 30 April 2022

Jeanette Vester and Suzan Kostanich have collaborated in this exhibition. Vester won the Lysaght Watt Trust Art Award in 2021, as well as the Fibre and Taranaki Artist sections of the Taranaki National Art Awards in 2019. Suzan is a self-taught multimedia fibre artist whose work spans four decades.

Still thinking: Dale Copeland & International Collages

2 - 28 May 2022

An exhibition of assemblages by Dale Copeland, accompanied by her large collection of collages made by artists around the world. Dale Devereux Copeland MNZM is a New Zealand collage and assemblage artist. Copeland describes her work as being about 'society's detritus and reworking discarded things into art'. Copeland, who is also a community art organiser, is called "the backbone of the Taranaki art scene" by the Taranaki Daily News. This is a rare opportunity to purchase original collages from the International Collage Exchange, which Dale has facilitated from her home studio in Puniho for 20 years.



Lysaght Watt Gallery 4 - 6 Union Street, Hāwera

Website: www.lysaghtwattgallery.co.nz | Facebook: Lysaght Watt Gallery

Open Monday - Friday 10.00 am - 4.00 pm Saturday 10.00 am – 1.00 pm | Phone 06 278 7611

The Village Gallery – Autumn Exhibitions



Cardiff Dairy Factory - screenprint by Marianne Muggeridge

Creative Clearance

Until 11 March 2022

An exhibition by members of The Village Gallery showing a wide variety of works. Also a 'Sales Table' of donated art and craft items, an annual fundraiser for the Gallery.

Celebrating 50 years: Eltham & Districts Historical Society **14 March - 8 April 2022**

Photos and memorabilia from the vaults of Eltham & Districts Historical Society. Featuring treasures of the past and stories from the archives presented to celebrate fifty years since the formation of the Society.

In All Dimensions: Hāwera Art Club

11 April - 6 May 2022

An exhibition by Members of the Hāwera Art Club, a group of enthusiasts covering a diverse range of artistic skills and pursuits. The Club meets on the first Friday of each month to share ideas and encouragement. Members enjoy access to a library of books and DVDs and can participate in exhibitions and workshops throughout the year. All enquiries welcome. Phone Cherol Filbee: 027 244 4953 or email: icemaiden1@orcon.net.nz

Members Autumn Exhibition

9 May - 3 June 2022

An exhibition of new artworks by Members of The Village Gallery. Many different subjects, artforms and media will be displayed, including painting, pottery, fabrics, fibre, photography, sculpture and mosaics.

Gallery AGM

7.00 pm Monday 2 May 2022

Willing helpers, whether artists or community-minded supporters are needed to join our team to continue our mission, 'to foster and encourage local and district art'. Members and potential Members are all welcome to attend.

The Gallery Shop offers Members an opportunity to display their items throughout the year. Cards, prints, paintings, pottery, photographs, jewellery and handmade accessories are available for sale.

The Village Gallery, 166 High Street, Eltham | Secretary, Donna Hitchcock, Phone 027 348 6826

Open: Monday - Saturday 10.00 am - 3.00 pm (closed Saturdays between exhibitions)

Facebook: Village Gallery Eltham NZ | Email: villagegalleryeltham@gmail.com

Hāwera Repertory News & Shows

75th Jubilee Celebrations

2.00 pm - 5.00 pm Saturday 5 March 2022

Repertory House, 59 Collins Street, Hāwera

Postponed since last October, the committee is opening up Repertory House for past, present and future members, sponsors, friends, volunteers and anyone else interested in popping in to celebrate the Jubilee. Catch up with friends and reminisce over afternoon tea while looking through the archives. The event coincides with the annual *Big Theatre Open Weekend*, a national celebration to welcome the community into 'theatre homes'. To enable the event to go ahead, Vaccine Passes are required on entry.



Mamma Mia!

11 - 25 June 2022

Hāwera Memorial Theatre, Albion Street, Hāwera

Hāwera Repertory presents a season on *Mamma Mia!* Directed by Clive Cullen, Musical Director Charles Pittams and Choreographer Greer Anderson. *Mamma Mia!* is a romantic comedy, contrasting the dreams and aspirations of a 70's girl and a 90's girl. Through the story-telling magic of the songs of ABBA we meet Donna, a feisty, independent single-parent, who doesn't need a man to make her life complete; and her twenty-year-old daughter Sophie, who wants romance, babies and a big white wedding.

Book tickets through [I-Ticket here](#) or at the South Taranaki i-SITE in Hāwera.

For more information contact hawerarepertory@gmail.com or visit www.hawerarep.org



Forbes & Flay Studio

Botanical Drawing Art Club

20 March, 17 April, 22 May 2022 10.00 am - 2.00 pm

Join Tabatha Forbes for a Sunday art class for those wanting to spend a few hours working on their plant drawing or continue on works started from previous classes. Cost: \$70 per class - Includes all materials. Discounts are offered to returning students.

Private Art Tuition Available - Forbes & Flay Studio

Develop your creative confidence in private classes with Dr Tabatha Forbes DocFA, MFA (Hons). Tabatha has worked with NCEA art students and those needing to focus their artistic skills or develop new ones. All levels welcome, ages 16+ pref. For more information and a free consultation please email Tabatha directly.

Nature Journal Weekend

5 & 6 March 2022, 10.00 am - 3.00 pm

For those who love nature, art, gardens and travel, keeping a nature journal is a wonderful and therapeutic art practise that includes drawing, mixed media and writing/note-taking. The workshop includes a walk to collect the weekend drawing material around Ōpunakē Lake (weather permitting).

Cost: \$150 - includes all materials to use in class and a take-home journal. Discounts for returning students.

For all enquiries and bookings, email: botanicalartclass@gmail.com

Plantgirl & Co: POP-UP Shop & Exhibition

Until 30 April 2022 10.00 am - 2.00 pm

The gallery will be full of botanical works, fine art prints and a POP-UP shop selling locally made flora and fauna themed products, including Plantgirl & Co cards, Darling Starling limited edition hand-painted t-shirts, plants, pots and prints and products by Sandra Morris.

Forbes & Flay Studio, 40 Tasman St, Ōpunakē | Email: botanicalartclass@gmail.com | Facebook: Forbes and Flay



from out of the blue studio gallery

Beauty and the Beast – Isla Fabu

Until 11 April 2022

"I grew up in Eastern Germany behind the Iron Curtain, believing in a scary beast on the other side of the wall. The wall came down but the beast turned out to be different than I thought. It lives inside of each of us, constantly dividing into self and other, like and dislike, having and not having and so on. Each piece in this exhibition reflects on my journey into the space beyond these dualistic perceptions. A journey guided by natural fibres and colours from the land, and indigenous wisdom." Isla Fabu (*pictured left – by Isla Fabu*)

More Than A Feeling: Jan Macneil and Jess Moughan

14 April - 23 June 2022

This joint exhibition explores the tactile nature of artworks and explores the way that working with fibre has an effect on our whole well-being as both the makers and the viewers. Jess resides in Ngaruawahia and was recently selected for the finals of the Molly Morpeth Candy Awards. Jan's 3D knitted forms feature regularly in the gallery.

Call and Response: Wendy Watson

26 June - 4 July 2022

A body of work by Wendy Watson and selected artist collaborators who have worked jointly and separately on items for the exhibition. It is a great creative departure from a more standard themed exhibition. Wendy is based in Whanganui.

AUTUMN WORKSHOPS: Depending on the Covid-19 situation, workshops will be offered by the artist involved in the Autumn exhibitions. The details and all information will be posted on the gallery website.

Contact: Viv Davy. Phone: 021 407 424 | 18 Halse Place, Ōpunakē

Website: www.fromoutofthebluestudiogallery.com | Open: 1.00 pm - 5.00 pm Thursday - Monday or by appointment

Facebook: from out of the blue studio gallery | Instagram: threadthinker | Email: silktangles@me.com

2022 Artist Applications are Open
Close: 31 March 2022



Taranaki Arts Trail 2022 is the ninth year of the trail and a fabulous opportunity for Taranaki

artists to showcase themselves and their work through open studios. Established in 2014 the Taranaki Arts Trail provides the public with the unique opportunity to meet with artists in their studio/workshops. Ultimately, the aim is to build a greater understanding in the community of the processes involved and the skills required in creating a work of art. Registration is open for all Taranaki artists, through the event website.

Any questions or enquiries from new or existing artists please contact Niki - Email taranakiartstrail@gmail.com
For more information visit: www.taranakiartstrail.co.nz



Toi Manaia - Exhibitions

Toi Manaia, the gallery in South Taranaki dedicated to Toi o Taranaki Ki Te Tonga's Māori artists and our art forms, has enjoyed a very busy summer with the exhibition *TAONGA*, and now presents *WHIRIA*, previously shown at Gallery Pātea, until 20 March. *WHIRIA* acknowledges Aotearoa/New Zealand's anniversary of the signing of the Treaty of Waitangi. Māori and Tauīwi (non-Māori) artists joined in a conversation to discuss what partnership could mean in the terms of the Treaty. From their kōrero came the artworks. Check out the Toi Manaia Facebook page to keep up with latest offerings and also shop online. (pictured left – by Maria Brockhill)

HE AHO opens at the Percy Thomson Gallery in Whakaahurangi (Stratford) on 5 March. *HE AHO* translates to 'threads', and expresses the idea of associations we have with others through shared whakapapa and historic events impacting on social frameworks and experiences of place. The creation of mahi toi enables cultural narratives to be passed down through the generations. Our yesterdays inform us today and become part of tomorrow's history. While some of these works have been

made in a contemporary context, they have already become part of our history and therefore our future. Statements by some of the artists make reference to others, whose support, mentorship and inspiration have impacted and influenced their own work. For Māori, mahi toi is not a solo artistic endeavour, but stretches out across the expanse of te Ao Māori whānau whānui, to enrich and enhance the wairua of all. This collection of works uses paint, light (photography and video), installation work, print, raranga and whakairo (wood and stone) by the participating artists to make references that enable some of the stories and connections across a wide expanse of time to come together in one place, within the Percy Thomson Gallery in Whakaahurangi, in this particular moment in time. Ngā mihi nui ki ngā rangatira toi o ngā wa i mua, me ngā ringa mahi o ēnei rā e tautoko ana te kaupapa nei.

Toi Manaia - 46b South Road, Manaia
Contact Bonita Bigham – Email bonitab@xtra.co.nz



Quirky Fox – Art + Framing

Unmoved – from 11 March 2022

Why must a creature that is regarded as 'magical' (while it is alive and kicking) be written off just because it has moved on from this plane of existence? Our latest solo exhibition – featuring the wildlife-themed works of Wisconsin-born, Indiana-based letterpress printer and illustrator Alexander Lee Landerman – reverentially addresses this topic via sensitively rendered ink illustrations that shift the beholder's perspective of what is worthy of being artistically memorialized.

Art in a Minor Key – from 22 April 2022

Rebecca Smith's work may be on a smaller scale than average but that doesn't take away from the detail or amount of work that goes into each of her 50c sized drawings. In fact, the time and detail are often more than that you regularly see. Rebecca's solo show is perfect for the art collector short on room.

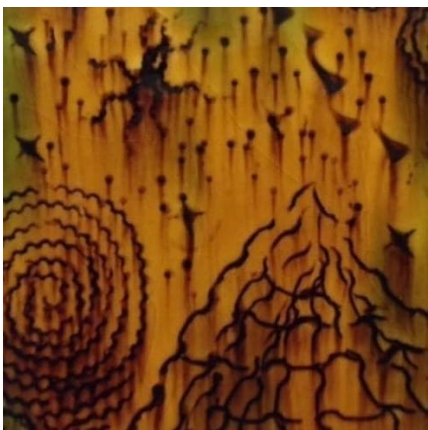
Quirky Fox, 205a High Street, Hāwera | Phone: 06 278 6909
Open: Monday - Friday 10.00 am - 4.30 pm Saturday 10.00 am - 12 noon
Facebook: Quirky Fox: Art & Framing | Website: www.quirkyfox.co.nz

Percy Thomson Gallery – Autumn Exhibitions

Following the retirement of Rhonda Bunyan, the new Director at the Gallery is Laura Campbell.

Exhibition Proposals - 2024

Artists are invited to submit proposals for solo or group shows in 2024. Email: director@percythomsongallery.org.nz



He Aho – threads: Toi o Taranaki ki te Tonga

4 - 27 March 2022

Guest curated by Gabrielle Belz and Bonita Bigham, this exhibition is about connections through whakapapa and place. The arts collective Toi o Taranaki ki te Tonga has brought together Māori artists who whakapapa to Taranaki, or who through living and working in Taranaki have contributed to the community through their mahi toi (artwork). Many of the works express the concepts behind whanaungatanga and how relationships are built and strengthened. Featuring a range of artworks, including sculptural pieces by Troy Hunt and Jason Hina that highlight the stonework tradition of Taranaki; portraits using light to create the image by Tania Niwa; an installation of the artist's personal journey to moko kauae by Bonita Bigham; new works by clay artist Maria Brockhill (*ceramic detail, pictured left*) and more.

He mihi atu ki nga ringa toi - Making visible the intangibles.

Shakespeare Anniversary

1 - 24 April 2022

Commemorating the anniversary of both Shakespeare's birth and death, local artist Jo Stallard has put together artefacts and costumes inspired by William Shakespeare.

Shadow Noir & Silhouette Photography Award 2022

An opportunity for local photographers to enter one black and white A4 photograph. Former Director Rhonda Bunyan will guest judge the entries (cash prizes) and select twenty finalists to exhibit, celebrating everything Shakespearean! For more information on how to enter, contact Jo at Fenton Arts Collective or Laura at Percy Thomson Gallery.

Stratford Art Society

29 April - 22 May 2022

Members of the Stratford Art Society continue to deliver a vibrant, exciting, and eclectic mix of artwork. Featuring more than 200 artworks, most for sale, the exhibition showcases the diverse talents and skill-base of the group's members. The Stratford Art Society plays a pivotal role in fostering the arts in the Stratford region and further afield.

Percy's Place is the gallery's boutique art shop, open 10.30 am – 3.30 pm Weekdays, 10.30 am – 2.30 pm Weekends.

The Gallery is currently seeking volunteers to assist with running the shop. The store is full of creations by local artists.

If you are interested in spending a day or two each month in the store, please contact the Gallery.

Percy Thomson Gallery, Miranda Street, Stratford | Director: Laura Campbell | Phone 06 765 0917

Open: Monday - Friday 10.30 am - 4.00 pm Saturday - Sunday 10.30 am - 3.00 pm

Website: www.percythomsongallery.org.nz | Facebook: Percy Thomson Gallery

Fenton Street Art Collective – Autumn Exhibitions

Classical vs Expressionist

31 March - 14 April 2022

Jo Stallard and Stuart Greenhill, owners of Fenton Street Arts Collective team up for this exhibition. *Pictured right: Painting by Jo Stallard*

Things Shakespeare

15 April – 19 May 2022

A tribute to Stratford's link to the bard.

MB Stoneman - Printmaker

20 May – 29 June 2022

A diverse range of fine art printmaking and letterpress works by Stoneman, an artist and poet based in Pātea.



11 Fenton Street, Stratford | Facebook: Fenton Street Art Collective | Email: fentonartscollective@gmail.com

Open: 9.00am – 2.00pm Monday – Saturday, 10.00am – 2.00pm Sunday | Phone: 021 0299 2839



Taranaki National Art Awards 2022 - AGM

The Committee is looking forward to being able to celebrate 20 years of this iconic Ōpunakē event in Spring 2022, presenting over 300 artworks from all over New Zealand.

Taranaki National Art Awards AGM

Thursday 10 March 2022 - 7.00 pm, Pihama Lavender, 3510 South Road, Pihama.

Facebook: [Taranaki National Art Awards](#) | Website: www.taranakiartawards.co.nz

Everybody's Theatre

Boutique Night: Sunday 6 March 2022 - Death on the Nile

Everybody's Theatre in Ōpunakē is an elegant historic theatre in which has been restored to its former glory. In addition to all the latest new releases, the theatre also hosts boutique nights, playing a selection of classic, foreign and fringe films. Bookings can now be made online. Check the website for screening and special events. Enquiries for special events are welcome.



Everybody's Theatre, 72 Tasman Street, Ōpunakē | Phone: 027 383 7926

Website: www.everybodystheatre.co.nz | Email everybodystheatre@gmail.com

Coastal Arts Trail

Art is at the heart of our communities, elevating cultural expression and lending vibrancy to life along the lower West Coast of the North Island. The Coastal Arts Trail takes in a broad range of classical and Māori art. You can enjoy sculpture, postmodern and street art, and experience first-hand the works of internationally renowned local artists. The scenic journey will guide you not only to art galleries and museums but also to off-the-beaten-track studios and creative rural communities. Discover unique galleries, learn traditional skills at a wide range of workshops and experience the ahurea tuakiri (cultural identities) of these regions.



**coastal
arts trail**

Website: www.coastalartstrail.nz

Puke Ariki - Autumn Exhibitions



Map It!

Undertake a quest across land, sea, and space to explore the role of mapping and navigation in everyday life. Throughout *Map It!* visitors will be captivated and surprised in the quest to explore cities, oceans, and the night sky, and develop their own mapping skills as they complete the quest map and uncover hidden layers of information.

Reef Alive!

Critical Drifters is an installation by artist Jacqui Elley (pictured left) that focuses on plankton, the incredible microscopic creatures at the start of the oceanic food chain who release 50% of the oxygen we breathe into the atmosphere. This highlights the care and responsibility we have to the ocean as acidification and warming continue to destabilise our marine ecosystem. *Reef Alive!* is a rich and interactive experience, ideal for families, children and anyone curious about the fascinating biodiversity in Taranaki's watery backyard. Dive in and check it out.

This is Our World

This is Our World explores the everyday experiences of Taranaki's young people, revealing unique viewpoints on the local urban environment as seen by them. Over 2020 and 2021, rangatahi participating in photography courses at ZEAL Taranaki documented their surroundings. ZEAL is dedicated to helping youth discover, express and develop their unique creativity.

Home Work Taranaki Art 2020 – Virtual Tour

Take a virtual journey featuring 57 artworks from established and emerging local talent through the gallery and explore the artists and artworks, with interactive features. Access via the Exhibitions page of the website.

**Puke Ariki, 1 Ariki Street, New Plymouth | Phone: 06 759 6060 | Open: 10.00 am - 5.00pm 7 days | Free Entry
Website: www.pukeariki.com | Facebook: Puke Ariki: Museum-Library-Visitor Information**



Holding Space Studios – Waverley

Holding Space Studios is a creative venture based in Waverley, run by Jenna Wakeling and Gemma Comrie. They stock a wide range of handcrafted products in the shop, alongside an event styling studio and a hub for creative studio workshops. The shop is currently closed, but you can check out the website for all they have to offer.

Holding Space Studios, 69 Weraroa Road, Waverley

Facebook: Holding Space Studios | www.holdingspacestudios.co.nz

Creative Taranaki

Creative Taranaki aims to support the creative communities in Taranaki to develop opportunities for regional collaboration to see growth, enablement and support for the vibrant arts sector. Artists and creatives are welcome and encouraged to sign up for email updates and follow the Facebook page to get involved in this kaupapa - lots of new developments are happening behind the scenes.



Facebook: Creative Taranaki | Email: creativetaranaki@gmail.com



Gover Street Gallery

Gover Street Gallery is an independent, not-for-profit space open to anyone to exhibit, offering a great platform for Taranaki artists to showcase and sell their work.

1 - 31 March 2022

Landscape: Gallery Group Exhibition

This is Me: Exhibition by Melissa Lovegrove

3 March 2022: World Wildlife Day - Artwork Competition Afternoon Tea

To enter, download entry form -

treasurebeyondmeasure.co.nz and deliver artwork to the Gallery. All profits for the Rotokare Reserve Trust.

1 - 30 April 2022

Round: Gallery Group Exhibition Open to everyone to take part, contact the Gallery for more information

Am-U-art Exhibition: Artwork by people who have experienced trauma.

Paul Hutchinson Exhibition

1 – 31 May 2022

Birds: Gallery Group Exhibition Open to everyone to take part, contact the Gallery for more information

Gover Street Gallery will be open on Taranaki Anniversary Day, Monday 14 March from 12 noon – 4.00pm

19 Gover Street, New Plymouth | To exhibit, register, enquire, contact Heidi on 06 757 4278

Open: Monday - Saturday 10.00am – 4.00pm, Sunday 12 noon – 4.00pm

Facebook/Instagram: Gover Street Gallery | Email: goverstgallery@gmail.com



The Big Idea

The Big Idea is an online hub for artists of all genres. The Big Idea provides you with daily news updates, the latest jobs and opportunities, events as well as ideas and inspiration from across the creative industries to help you create your own success. The Big Idea is the largest, leading online resource for the arts in New Zealand.

Website: www.thebigidea.nz

Creative New Zealand is the national arts development agency developing, investing in and advocating for the arts. Check out the [Funding calendar](#) for an overview of the support available. Information on all funding opportunities is announced through the CNZ newsletter, [sign up](#) to receive news and updates via email. [Arts Grants](#) offer short-term project funding for New Zealand artists, arts practitioners and arts organisations (including groups and collectives). This funding enables more sustainable careers, encourages innovation and the development of art practice, and provides opportunities for diverse communities to access the arts. Amount: \$5,000 to \$75,000.

For updates and information on all Creative NZ funding, visit the [website](#)

[Ōpunakē Open Studios & Galleries](#) – *click to follow link*



Waverley Glass Art Studio and Gallery

Artists Lisa and Jimi Walsh show highly collectable glass and ceramic artworks and functional pieces, created onsite in the adjoining workshops.

49 Wereroa Road, Waverley

Open: 8.30 am - 4.00 pm daily, closed Wednesdays

Phone: 027 684 3641 | FB: Waverley Glass Art Studio



The Emporium

The Emporium pride themselves on representing local New Zealand artists and stocking high quality, unique homewares and gifts. Rhonda Crawford creates original landscape and botanical paintings in her studio at the rear of the gallery.

86 Tasman Street, Ōpunakē

Open: 10.00 am - 4.00 pm Wednesday - Monday

FB: The Emporium Ōpunakē | Web: www.theemporiumnz.com

Would you or your group like to have information included in the next edition of

Te Tohu a Toi – STATE OF THE ARTS?

Please send concise text and photographs for the Winter Edition (June, July, August 2022) to:

Michaela Stoneman, Arts Co-ordinator: michaela.stoneman@stdc.govt.nz

Send information by:

Monday 23 May 2022

Publish date:

Wednesday 1 June 2022

To unsubscribe to *State of the Arts*, please [email Unsubscribe](#) in the subject line.