

Te Tohu a Toi

STATE OF THE ARTS

South Taranaki Arts Bulletin # 50

Autumn 2023

| [Art News](#) | [Opportunities](#) | [Exhibitions](#) | [Art Events](#) |

Welcome to our Autumn edition of *State of the Arts*.

In December, we held a special ceremony to celebrate the new **Waverley Pool Mural** on State Highway 3. Designed by nine-year-old Noklair Milton, the young local artist was delighted to have her drawings painted by Dan Mills, a professional mural artist from Eltham. The vibrant colour scheme was chosen by Noklair, and Dan did an amazing job bringing her energetic imagery to life. Waitōtara School attended the ceremony and sang waiata to support their fellow student. Many thanks to the Pātea Community Board for supporting this project, it's a wonderful example of the benefits of collaboration and the opportunity for growth community art projects bring.



Noklair Milton pictured far left, with staff and students from Waitōtara School at the ceremony

After the lack of events over the past couple of years,

I am stoked to be bringing an **Arts on Tour NZ** show to Rahotu Hall in April. Arts on Tour NZ offers opportunities to host professional touring performances in small rural areas, ensuring the arts is accessible to people who live outside the main centres. *The Boy with Wings* is a clever puppet show with a difference, appealing to kids of all ages. I encourage families to attend this free show to experience something special together on a Saturday morning.

The **South Taranaki Creative Communities Scheme** funding round closes soon. Please get in touch if you have an idea you'd like to discuss or for support with your application. We can offer help with many planning aspects involved with facilitating community arts projects throughout South Taranaki.

This is the **50th edition** of this quarterly publication. It began over 12 years ago when feedback from the arts community requested a regular newsletter to keep informed of what was happening throughout the district. Back in the first edition, Spring 2010, I wrote *"I look forward to strengthening the links between us all by sharing our projects, achievements, ideas, aspirations, and plans for the future. The aim is to increase participation, networking opportunities, support and a sense of belonging within our thriving arts community."* All these years on, the goal is still the same!

Please continue to support and be a part of our galleries, groups, projects and events – thanks for your positivity, commitment and vision to keep the arts alive and growing.

Ngā mihi,

Michaela

Michaela Stoneman | Arts Co-ordinator | South Taranaki District Council | 0800 111 323
michaela.stoneman@stdc.govt.nz | www.southtaranaki.com

South Taranaki Creative Communities Funding

Do you have a community arts project that needs some funding support?

The current round for the South Taranaki Creative Communities Scheme (CCS) opened in February 2022. Comprised of representatives from local Community Boards, our local arts community, Iwi and Youth, the CCS committee meets twice a year to allocate funds to creative projects throughout the district.



The South Taranaki Creative Communities Scheme provides funding assistance for community-based arts activities in South Taranaki that meet one or more of the following funding criteria:

- **Broad community involvement** - A project that will create opportunities for local communities to engage with and participate in arts activities.
- **Diversity** - A project that will support the diverse arts and cultural traditions of local communities, enriching and promoting their uniqueness and cultural diversity.
- **Young people** - A project that will enable and encourage young people (under 18 years) to engage with and actively participate in the arts.

Applications for funding close at 5.00 pm Thursday 9 March 2023, for projects that take place between 6 April 2023 and 6 April 2024. If you have an idea for a project or would like support with your application, you can email STDC Arts Coordinator Michaela for support – michaela.stoneman@stdc.govt.nz

For detailed information and forms, please visit the link [here](#)

Any enquiries to discuss an application, email funding@stdc.govt.nz or phone 0800 111 323 or 06 278 0555

Arts on Tour – South Taranaki 2023

The Boy with Wings

10.30 am Saturday 1 April 2023

Rahotu Hall, Rahotu

Using puppetry, songs, storytelling, and exquisite hand-crafted sets that magically unfold out of boxes, award-winning theatre company 'Birdlife Productions promises laughter, tears and thrilling adventure when a young man's epic journey unites with the miracle of Kuaka/Bar-tailed Godwit migration. In this high-tech fast-paced digital world, *The Boy with Wings* offers families a counter to 'screen time' that allows space in 'real-time' for children to watch, listen and reflect. Melded with a real-time ornithological lecture, this is a comic, touching, and environmental story using the ageless wonder of puppetry that dares us all to follow our dreams. Designed specifically for children ages 5 to 9 years, but loved by all ages. Free entry, all welcome. Doors open at 10.15 am. Bring a cushion.



Free entry. For more information contact Michaela Stoneman – Email michaela.stoneman@stdc.govt.nz



Te Wa'anake – The Foundry

A new co-working space and enterprise hub recently opened in the Hāwera CBD, with a mission to foster a more connected and effective enterprise network in South Taranaki. The facility has an informal open space with comfortable seating, private meeting rooms, offices and quiet booths for private conversations or Zoom meetings. At the rear is a covered courtyard with a barbecue and outdoor seating. The spaces can be rented and used by start-ups, existing businesses, or simply for people needing a space to meet. The facility will offer business support and training events and provide space

for business people and the wider community to hold their own events. Hāwera Bizlink's office has relocated into The Foundry, with longtime co-ordinator Nikki Watson appointed as the Council's Events and Vibrancy Co-ordinator. The facility is managed by Enterprise Hub lead Paul Whakatutu.

130 High Street, Hāwera | Website: www.thefoundrycoworking.co.nz | Email: paul.whakatutu@stdc.govt.nz
Facebook: The Foundry Coworking

Creative Taranaki News

Funding Applications 101 Workshop

5:30pm 27 March 2023

Manifold Co-Working Space, 49 Currie St, New Plymouth



Creative Taranaki presents a funding application workshop facilitated by funding guru Valerie Barraclough. Valerie has over 15 years of experience in this area, having worked in the UK for the National Foundation for Youth Music before moving to Taranaki a few years ago. Having been on both sides of the application process - as both applicant and assessor - Valerie is in the unique position of being able to write applications while maintaining the lens of how funders think. Responses from Creative Taranaki's recent survey about funding needs and experience highlighted that the majority of people interested had little or no experience in applying for grants. Therefore, this workshop is aimed at beginners and mid-level grant-seekers. Come to the workshop to find out more about:

- Different types of funders that are out there
- Criteria for funding, why these exist and how to establish a good fit for your work
- What to consider in the overall funding process
- Planning your application
- How to use the right language when talking about needs and outcomes, and how to measure the impact

Light refreshments provided. 30 spaces available. Tickets \$10 - book [here](#)

Valerie will also be holding a series of funding application clinics throughout the year, where you can bring in your applications in progress for one-on-one advice and assistance. Creative Taranaki hopes to bring a similar workshop to South Taranaki later in the year. Watch this space!

For more information and updates - Facebook: [Creative Taranaki](#) | Website: www.creativetaranaki.org



Taranaki Arts Trail 2023

27- 29 October & 3 - 5 November 2023

Registrations due by 31 March 2023

The Taranaki Arts Trail celebrates its 10th trail this year. If you are a Taranaki-based artist and have thought of participating in this diverse, region-wide, creative event, artist registrations are currently open. There are a lot of opportunities on offer to participating artists. You can register your studio or gallery online, or get in contact if you have any specific questions about the registration process.

A new initiative this year is for artists, patrons or supporters to acknowledge a participating Taranaki Arts Trail artist. For \$100 per artist, you can show your support within the Taranaki Arts Trail brochure

that showcases the creative talent in the Taranaki region. There is just one acknowledgement available per artist so get in touch soon to secure your favourites. The committee thanks everyone for participating in, visiting and supporting the Taranaki Arts Trail over the past decade and is thrilled to be celebrating this milestone in 2023.

Email: taranakiartstrail@gmail.com | Website: www.taranakiartstrail.co.nz

[Sugar Loafing Arts Cast » Access Radio Taranaki 104.4FM](#) – Local Arts Podcast

New Publication – South Taranaki Writers

Ngā Pūrehu Kapohau: a poetic homage to Pātea, Waverley and Waitōtara is due for launch in May 2023. Editor-in-Chief Trevor Landers says “The response has been nothing short of astonishing. The calibre and range of poetry has really traversed the topography and soul of the district, using a myriad of approaches and addressing umpteen different themes in both Te Reo Māori and English”. The volume is co-edited by Dr Vaughan Rapatahana, Ngauru Rawiri and Landers. An invitation to the launch function will be announced soon.





South Taranaki Creative Space

South Taranaki Creative Space is a community-focused creative hub in the Hāwera CBD, providing a welcoming space to meet, interact, learn new skills and network with other creative people. The *Community Unity Gallery* has exhibitions changing monthly. Up to two artworks per artist, \$5 koha hanging fee, no commission taken on sales. All welcome - please get in touch to exhibit, join a class or book a workshop.

Creative After-School Kids Art Classes:

Weekly, Tuesday - Thursday during school terms.

Classes cover a wide range of mediums to help young creatives with their artistic development by exploring different ideas and techniques. Designed for students who have a genuine interest to learn art and creativity and attend regularly.

Teens Art Classes: With tutor Carl Fairweather. A great opportunity to create while learning about artists and art history.

Creative Holiday Programmes: Run for children and families during the school holidays.

Creative Adults Art - Beginners: Thursdays 6.30 pm - 8.30 pm

Creative Adults Art - Experienced: Tuesdays 6.30 pm - 8.30 pm

SATURDAY WORKSHOPS: A great variety of regular workshops are available. Check out Facebook updates for details. Full details and the registration process will be posted on the South Taranaki Creative Space Facebook page.

Facilitators: Carl Fairweather and Erryn Willcox | 41 Princes Street, Hāwera | Phone or text: 027 361 6930

Facebook: South Taranaki Creative Space | Email: southtaranakicreativespace@gmail.com

Hāwera Repertory News

Aladdin – The Pantomime

AUDITIONS: 10.30 am Saturday 4 March 2022, Repertory House

The season of Aladdin will be performed over 10 performances at the Hāwera Memorial Theatre from 7 - 15 July 2023. Rehearsals begin on Sunday 26 March 2023. To make an audition appointment please [fill in this form](#). For full audition pack and enquiries: Email: aladdin@hawerarep.org.

Shakespeares Women

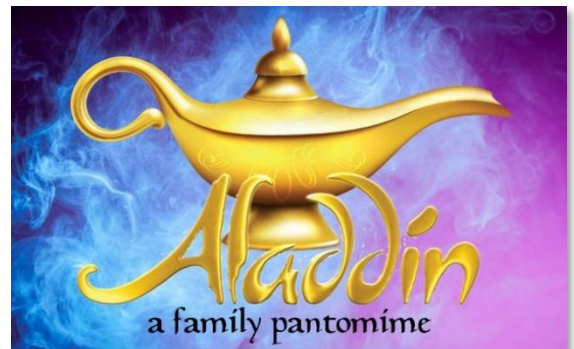
7.30 pm, 4 - 6 April 2023

Stratford on Stage, Stratford

Presented by Hāwera Repertory for the Stratford Shakespeare Festival 2023. Directed by Clive Cullen.

The Hāwera Repertory Junior Production for the year is 'Honk! The Musical', the story of the Ugly Duckling and has a local cast of 38 talented youth, under 14 years.

For more information contact hawerarepitory@gmail.com or visit www.hawerarep.org



South Taranaki Writing Groups

Poetry Get-Together - Eltham

Meet: 10.00 am Last Friday of the month, Eltham LibraryPlus

An informal monthly opportunity for writers and poets to meet and connect with others. Come along for a cuppa, share poetry, or just listen. Contact Helen Pickford - Email: pickson@xtra.co.nz.

Hāwera Writers Monthly Zoom Hui

A small group of Hāwera writers have an early morning Zoom hui on the second Tuesday morning of the month. If anyone is interested to join this, please contact Pip Harrison – Email: pip.harrison@slingshot.co.nz

Hāwera Memorial Theatre Trust News

Hāwera Memorial Theatre Trust Variety Show

7.30 pm Saturday 25 March 2023

2.00 pm Sunday 26 March 2023

The Hāwera Memorial Theatre Trust works alongside South Taranaki District Council to update facilities and equipment, and maintain the theatre's reputation as 'one of the best small town theatres in the country'. The Trust has two main aims:

- Through funding initiatives, maintain a facility that is modern and fit for purpose for local, national and international artists to perform
- To encourage as many people as possible to enjoy the theatre experience, either on stage, backstage or in the audience.

These aims are fulfilled by concerts and productions, attracting new performers, volunteers, technical people and audiences alongside loyal supporters and performers. Since its inception in 2011, the Trust has raised hundreds of thousands of dollars for improvements to the theatre, through grant applications and by hosting concerts in the community. The Trust has produced a fundraising variety show every year since 2017. Support the Trust by attending this year's show!

Tickets are on sale at the South Taranaki i-Site, Hāwera. Adult \$25, Child \$10



Facebook: Hawera Memorial Theatre Trust | www.haweratheatretrust@weebly.com

Email: haweratheatretrust@gmail.com

Aotea Utanganui – Museum of South Taranaki

Oral Histories of South Taranaki

Presenting a diverse collection of recorded oral histories, voices of people from South Taranaki communities. Through spoken word and memories of the past and present, our stories are preserved as heritage. The project offers an opportunity for people speak on local history, voices who may not have had the privilege to be heard, on subjects not represented in history books or captured in photography. This unique project gives us access to the lived experiences of people from the surrounding land and communities.



Waterways: Ngā Awa o Taranaki ki te Tonga

Maunga Taranaki is the well-spring of our region. From his majestic slopes and the surrounding ranges, flow rivers and streams that stretch across the district into the Tasman Sea. *Waterways – Ngā Awa o Taranaki ki te Tonga* will explore the effects human activity has had on the environment; especially as water is an important resource for industry, agriculture and recreation in South Taranaki.

Aotea Utanganui - Museum of South Taranaki, 127 Egmont Street, Pātea | Phone: 06 273 8354

Facebook: Aotea Utanganui | www.museumofsouthtaranaki.wordpress.com

Email: museum@stdc.govt.nz | Open: 10.00 am - 4.00 pm Monday – Saturday

Gallery Pātea – Autumn Exhibitions

Wahi Ngaro – An exhibition by Stacey Austin

1 March - 1 April 2023

Originally from the North of England, where she attended Rochdale Art College, Stacey Austin is of Irish and Scottish descent. She says she is a 'New Zealander by choice, Celtic by descent, Indigenous in spirit' and after travelling widely, she is now based in Pātea. The title of the exhibition, *Wahi Ngaro*, means 'hidden realm, world of gods and spirits, divine intervention, heavens'. Inspired by the beauty and colours of nature, spirituality and the connections of people throughout the world and how our histories and stories combine. Stacey says '*Wahi Ngaro* seeks to show the places we sometimes glimpse between waking and sleeping when glimmers of beings flit just outside our vision. Memories and imaginings all but forgotten, apart from in the shadows and in our dreams'. This installation creates an insight into the artist's vision of another realm.



Gallery Pātea, 56a Egmont Street, Pātea | Open: 10.00 am - 2.00 pm Wednesday - Saturday or by appointment
For more information text Gabrielle Belz 021 0813 8355 | Facebook: Gallery Pātea | Email gallerypatea@gmail.com

Waiata for Wairoa – Fundraiser

Waiata for Wairoa

7.00 pm Friday 10 March 2023

Hāwera Repertory, 59 Collins Street, Hāwera

A fundraising concert to support Wairoa families to rebuild following the effects of Cyclone Gabrielle. Featuring musicians Karen Clarke, Farley Hokopaura and Pete Norris and Celine Filbee. 100% of ticket sales to support Wairoa residents.

Tickets \$30. To book, text Jude: 027 2759 750



Lysaght Watt Gallery – Autumn Exhibitions

Feathered Chorus: Stratford Camera Club / Paintings: Wendy-May Thompson

Until 4 March 2023

Sculptured Furniture & Abstract Photographs – Ian Key / Taranaki Landscapes 2023 – Mark Bellringer

6 March - 1 April 2023. Opening Event: 4.00 pm Sunday 5 March 2023



Based in Eltham, Ian Key presents an eclectic collection of sculptured furniture and abstract photographic images for our appreciation. His signature furniture designs are often made from timbers he has logged and milled himself and are offset by quirky objects d'art and nonfigurative pictorial works with a metallic finish. Ian commenced his artistic journey in Auckland in the early 1990's and re-emerges as an artist after a hiatus of some years.

Also from Eltham, Mark Bellringer captures the spirit of the Taranaki landscape in 'plein air' tradition, painted in 'alla prima' (wet on wet) style. Travelling the back roads of Taranaki on his Royal Enfield motorcycle, Mark documents the 'ordinary everyday that surrounds us' from interesting points of view.

WORKSHOP: Plein Air Painting with tutor Mark Bellringer

9.30 am - 4.00 pm Sunday 19 March 2023

A unique opportunity to learn to paint 'plein air' style with an experienced tutor. Meet at the gallery to discuss the process, and equipment and have a demonstration by Mark in the morning, followed by a hands-on painting session in the afternoon. Bring oil paints, easel, prepared canvas or board and a selection of brushes. \$100 per person, limited to 10 participants. For enquiries and to register, contact Mark Bellringer Email: mark@markbellringer.co.nz or phone 0274974900

Turner 'round Taranaki

3 April – 29 April 2023

Well-known painter Merv Turner exhibits a series of landscapes primarily in oils and watercolours, across a wide range of styles from impressionistic vistas to detailed studies. He completed art studies at Elam in Auckland from the 1950's through to 1960's. Merv's work has been a fixture at regional and national levels, with many awards accomplished throughout the decades. He continues to paint 'on location' or at his studio in Ōpunakē.

Taranaki Arts Trail Exhibition

From 8 May 2023

For the second year, Lysaght Watt Gallery is proud to showcase the work of artists participating in the Taranaki Arts Trail 2023. A diverse mix of art will be exhibited in a range of mediums and styles. A spotlight will be on artists living and working in South Taranaki and along Surf Highway 45 and in addition to other areas of Taranaki. The event gives those living in South Taranaki a chance to view high-calibre artworks from artists living and working around the province.

Lysaght Watt Gallery 4 - 6 Union Street, Hāwera

Website: www.lysaghtwattgallery.co.nz | Facebook: Lysaght Watt Gallery

Hours: Monday - Friday 10.00 am - 4.00 pm Saturday 10.00 am - 1.00 pm | Phone 06 278 7611

The Village Gallery – Autumn Exhibitions

Creative Clearance - Until 3 March 2023

The Gallery will be closed from 4 - 8 March, between exhibitions.

A Working Bee will be held on Monday 6 March from 10.30 am for maintenance, interior painting and cleaning.

Muddy Thursdays

9 March - 8 April 2023 (closed Good Friday, 7 April)

Curated by Margaret Foley, featuring a wide range of pottery and mixed-media artworks by a group of potters who meet on Thursdays at the New Plymouth Potters Club, based at the historic Te Henui Vicarage. Participating potters will be 'artists in residence' at the gallery each Saturday during the show, a great opportunity for visitors to engage and discuss various methods and materials that have been used in their work.

Thursday Brush Strokes

11 April - 5 May 2023

Curated by Karen Waterson. A group of like-minded people from many different walks of life get together each week to try to sort out all the problems of the world and paint. Started a number of years ago by Jean Franklin, the present members of the group are Lynette Harrison, Eileen Saunders, Sonny Murphy, Gloria Smith, Leanne Bayley, Janice Carroll, Sam Carroll and Karen Waterson. Tony Waterson will also exhibit some of his turned and sculptured woodwork.



Elements of Nature

8 May - 2 June 2023

Opening Event: 3.00 pm Sunday 7 May 2023 - All welcome

An exhibition by three well-known nature-loving Taranaki artists. Yvonne Geeraedts' watercolour landscapes (*pictured above*) are inspired by the colours, shapes and inner peace that nature provides. Maryanne van Roij (Klei) is a ceramic artist creating functional pieces from porcelain, experimenting with different glazes and decorative techniques. Jennifer Patterson is a textile artist who works with natural fibres, fabrics and dyes. Her works will include dye-painted landscape quilts, silk scarves and rusted silk organza pieces.

The Gallery Shop offers members an opportunity to display their items throughout the year. Cards, prints, paintings, pottery, photographs, jewellery and handmade accessories are available for sale. The Village Gallery invites new Friends of the Gallery members, volunteers and supporters to join our community art gallery in the heart of Eltham.

The Village Gallery, 166 High Street, Eltham

Secretary, Donna Hitchcock – Phone 027 348 6826. Email: postiehitchcock@gmail.com

Tuesday – Friday 10.00 am – 3.00 pm. Saturday 10.00 am – 1.00 pm. Closed Sunday and Monday.

Facebook: [Village Gallery Eltham NZ](https://www.facebook.com/villagegalleryeltham) | Email: villagegalleryeltham@gmail.com



Artwork by Leigh Schneider

Quirky Fox – Art + Framing

Beyond the Shadows: Leigh Schneider

Leigh Schneider's debut solo exhibition. This show seeks to ignite a vision for transformation and growth, for a future beyond the shadows of current circumstances. It gathers together many of the artist's works on topics such as loss, isolation and depression, inviting the viewer to look deeper into the symbolism of the images, which points at a way forwards.

Featuring 12 framed limited edition photographic works, the collection has been completed over a period of three years. The collection is available to view both online and in the gallery. A portion of proceeds from all sales of this collection will be donated to LifelineNZ.

Quirky Fox, 205a High Street, Hāwera | Phone: 06 278 6909

Open: Monday - Friday 10.00 am - 4.30 pm Saturday 10.00 am - 12 noon

Facebook: [Quirky Fox: Art & Framing](https://www.facebook.com/quirkyfox) | Website: www.quirkyfox.co.nz

Everybody's Theatre - Ōpunakē

Historic theatre restored to its former glory. In addition to all the latest new releases, the theatre also hosts boutique nights, playing a selection of classic, foreign and fringe films. Check the website for screening and special events. Bookings can now be made online. Enquiries for special events are welcome.



Boutique Nights: 7.00 pm, first Sunday of the month

Sunday 5 March 2023: *Empire of Light*

Sunday 2 April 2023: *Red, White and Brass*

Sunday 7 May 2023: *80 for Brady*

One Night Stand – Comedy Show

7.30 pm 11 March 2023

Back for another great show of top NZ comedy. Headlined by 2017 Billy T nominee Patch Lambert, with more acts to follow. Tickets are just \$20, and available from KiwiTicket. Door sales \$30.

Everybody's Theatre, 72 Tasman Street, Ōpunakē | Phone: 027 383 7926
Website: www.everybodystheatre.co.nz | Email everybodystheatre@gmail.com

from out of the blue studio gallery

A Thing of Shreds and Patches: Jane Woodhall

Until 13 March 2023

Jane is a creative assembler and stitcher. Her works are powerfully evocative and intricately worked. Check out Jane's website for further exploration of her textile art practice - www.woodhall.co.nz

Three By Two - Ways With A Needle

17 March - 24 April 2023

Three highly creative stitchers, Pravina Phillips, Wendy Johnstone and Felicity Willis, are combining to fill the studio gallery space with their works and ideas. The exhibition has been created over the past two years and includes a fortnightly challenge using a letter of the alphabet and a keyboard symbol to create a design, and a monthly word-based creative challenge. The results show amazing and different interpretations through embroidery and mixed media. Check the website for further information about this exhibition.



Extinction Is Forever - Solo Exhibition by Marilyn Rea-Menzies

27 April - 29 May 2023

A career headline exhibition by NZ's master tapestry weaver Marilyn Rea-Menzies. These works comment on how our island nation is being transformed by forces of nature, perhaps making some of our lifestyles extinct.

Free Knit-In: Held weekly from 1.00 pm - 3.00 pm on Thursdays. If you have the desire to knit with others, learn to knit, get help with a tricky pattern or anything else to do with knitting, all are welcome to join this group.

Mending Café: Held the first Sunday of each month. For mending clothing and textile items. Bring your items to be mended and the group will help mend, teach you how to mend or do it for you. While the studio seeks innovative new ways to reduce its environmental impact, we offer learning this skill set to people under the umbrella of The Repair Café global network. All welcome. Tea & coffee is provided.

AUTUMN WORKSHOPS: A varied selection of workshops are coming up - check the gallery website and Facebook events.

Contact: Viv Davy. Phone: 021 407 424 | 18 Halse Place, Ōpunakē

Website: www.fromoutofthebluestudiogallery.com | Open: 1.00 pm – 5.00 pm Thursday – Monday or by appointment

Facebook: [from out of the blue studio gallery](https://www.facebook.com/fromoutofthebluestudiogallery) | Instagram: [threadthinker](https://www.instagram.com/threadthinker) | Email: silktangles@me.com

[Ōpunakē Open Studios & Galleries](#) – *click to follow link*

Taranaki National Art Awards

Taranaki National Art Awards 2023 - AGM

Taranaki National Art Awards AGM
1.00 pm Thursday 31 March 2022 - All welcome
Sinclair's Events Centre, Ōpunakē

The TNAA Committee celebrated 20 years in 2022 and is looking forward to getting the team ready for this year. This iconic Ōpunakē event is hosted at Sinclair's Events Centre in spring each year, presenting over 300 artworks from all over New Zealand. All welcome to attend, feel free to get in touch to get involved in this fun, creative event.

Facebook: [Taranaki National Art Awards](#) | **Website:** www.taranakiartawards.co.nz

American Blues Musician – Ōhawe Beach

Ruth Wynard - Taranaki Tour
7.00 pm 24 March 2023
Ōhawe Hall, Ōhawe Beach

American blues guitarist Ruth Wynard is swinging by Taranaki in March as part of her 11-gig New Zealand tour. Ruth will play a mix of originals as well as well-crafted instrumental arrangements of classics ranging from Doc Watson, Etta Baker, Jimi Hendrix and Nina Simone. The support act is Hāwera based singer-songwriter, Celine Filbee. Tickets are \$20 on the door.



Percy Thomson Gallery – Exhibitions

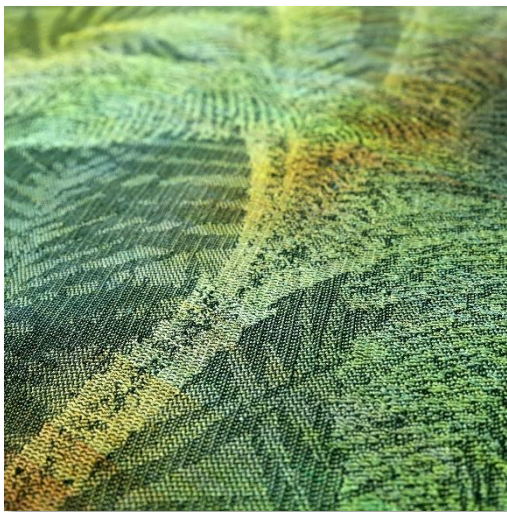
Professional Weavers' Network / Daughters of Eve
3 - 26 March 2023

Featuring a national touring exhibition of professional weavers, blending imagination, skill and creative flair from 45 of New Zealand's most talented weavers. Daughters of Eve features works by Brenda Cash, Suzan Kostanich, Kris White, Jeanette Verster and Maria Brockhill. Each member of this Taranaki female art collective specialises in their chosen disciplines of painting, textile and pottery.

Pictured left – detail of 'Ponga' by Agnes Hauptli

Stratford Art Society – Members Autumn Exhibition
31 March – 30 April 2023

Local artists return to the Gallery with this show for members. The deadline for entries is Friday 3 March 2023.



Don't judge a book by its cover; it may take you on another journey - Wallace Art Trust
5 May - 23 June 2023

National touring exhibition curated by Justin Morgan and Laura Campbell. Bringing together a diverse selection of artworks from the Wallace Arts Trust aims to lure the viewer beyond the cover of a book to reveal new pictorial narratives. Works by artists such as Bill Hammond, Ralph Hotere, Peter Trevelyan, Michael Smither, Milan Mrkusich and others from the collection – this exhibition will tie in with local community events celebrating art and literature in Aotearoa.

Percy's Place is the gallery's boutique art shop, open 10.30 am - 3.30 pm on Weekdays, and 10.30 am - 2.30 pm on weekends. The Gallery is currently seeking volunteers to assist with running the shop. The store is full of creations by local artists. If you are interested in spending a day or two each month in the store, please contact the Gallery.

Time to renew Friends of the Gallery Memberships for 2022/23. Please enquire in person at the Gallery or renew online.

Percy Thomson Gallery, Miranda Street, Stratford | Director: Laura Campbell | Phone 06 765 0917
Open: Monday - Friday 10.00 am - 4.00 pm. Saturday - Sunday 10.00 am - 3.00 pm
Website: www.percythomsongallery.org.nz | Facebook: Percy Thomson Gallery

Puke Ariki Museum - Autumn Exhibitions

Nekenekehia Tukua: A WharehokaSmith Exhibition - Until 12 March 2022



State of Nature: Picturing the Silent Forest

7 April - 5 November 2023

Explore the stories of our native forests through the botanical paintings of artist Fanny Bertha Good (1860-1950) and the experiences of her family in colonial Taranaki. Fanny Good was born in north Taranaki and lost her hearing as a teenager after contracting measles. While Taranaki's native forests were being cleared to make way for farmland, she spent her time exploring the bush near her home in Ōeo and later Hāwera, collecting native plant specimens for her work.

Puke Ariki holds over 200 of Fanny's paintings, with a large selection showcased for the first time in State of Nature. Working with oil paint rather than the more traditional media of watercolour, her depictions of native flora and fungi are more expressive than those of other botanical artists of her time. Yet her attention to detail means that many of the species she painted can be clearly identified, providing a unique record of our botanical landscape. Several of the species that Fanny painted are now in decline or threatened with extinction. Through her work and creative responses by four contemporary local artists, discover the role that art can

play in bringing attention to the state of our natural environment. Follow a multi-sensory journey through the trees, learn what makes them so special, and discover how you can help protect and grow our native forests today.

Puke Ariki, 1 Ariki Street, New Plymouth | Phone: 06 759 6060 | Open: 10.00 am - 5.00 pm 7 days | Free Entry
Website: www.pukeariki.com | Facebook: Puke Ariki: Museum-Library-Visitor Information

Virtual TART - News

The Virtual Tart site, as well as being a showcase for 40 Taranaki artists, also has a new exhibition each month by an artist from anywhere in the world.

March Exhibition: Teresa Goodin Artist and alchemist from Lumen Gallery, Tataraimaka.

April Exhibition: Mini Shapiro, USA - A new series of collaged images on pages of old script.

May Exhibition: Tony Rumball - Presenting 'Oops', a series by New Plymouth-based painter.



For more information and to view exhibitions, visit www.tart.co.nz

Fenton Street Art Collective - Exhibitions



Unconscious Intention - Jacqui Wilkinson: Until 31 March 2023

Explores the notion that our journey through life is mostly out of our hands.

Life is a Walking Shadow - Finalists Exhibition: 1 - 19 April 2023

Film Noir & Silhouette Photography Award, sponsored by Fenton Street Arts Collective. Entries close 20 March 2023. Details on gallery Facebook page.

Stratford Shakespeare Festival: 31 March - 15 April

Two weeks of events that celebrate Stratford's link to the bard.

[Details on website.](#)

Maria Cristina Luque - Opening 20 April 2023

New Plymouth-based, Patagonian surveyor will exhibit a selection of 15 3D art form maps from a series of more than 60 topographic maps made between 1925 and 1928 in Taranaki.

Bee My Vision - Melissa McCullough - Opening 5 May 2023

Openly obsessed with bees, this work highlights their decline using encaustic painting.

11 Fenton Street, Stratford | Facebook: Fenton Street Art Collective | Email: fentonartscollective@gmail.com
Open: 10.00 am - 2.00 pm – Tuesday - Sunday, closed Mondays | Phone: 021 0299 2839

Gover Street Gallery News

Katherine Novak Exhibition: 1 - 31 March 2023

The paintings in this exhibition were inspired by historic black and white studio portrait photographs.

WORKSHOP: Sea Themed Workshop with Margaret Scott 10.00 am - 4.30 pm 11 March 2023

Limited numbers, booking essential. \$120 per person - includes paints, drinks and snacks.

Silent Auction – NZ Red Cross Crisis Appeal

10 - 31 March 2023

Raising funds for cyclone affected communities in NZ

Melissa Lovegrove Exhibition - A New Approach: 1 - 30 April 2023

In March a new gallery system will start, with no hanging fees. All artists have the opportunity to display their work within the gallery space. We look forward to welcoming you all. Please get in touch if you have any questions

**19 Gover Street, New Plymouth | To exhibit, register, enquire, contact Heidi on 06 757 4278
Open: Wednesday – Monday 10.00 am – 4.00 pm, Sunday 12 noon – 4.00 pm. Closed Tuesday
Facebook/Instagram: Gover Street Gallery | Email: goverstgallery@gmail.com**



Coastal Arts Trail

Art is at the heart of our communities, elevating cultural expression and lending vibrancy to life along the lower West Coast of the North Island. You can enjoy sculpture, postmodern and street art, and experience first-hand the works of internationally renowned local artists. The scenic journey guides you not only to art galleries and museums, but also to off-the-beaten-track studios and creative rural communities. In South Taranaki, you have the choice of two highways and 14 diverse listings. Discover unique galleries, learn traditional skills at a wide range of workshops and experience the cultural identities of these regions.



**coastal
arts trail**

For more information or to plan your trip, visit: coastalartstrail.nz

The Learning Connexion School of Creativity and Art (TLC)



An art school based in Lower Hutt (Wellington region) established 32 years, TLC is New Zealand's only education provider fully dedicated to teaching creativity processes. Programmes can be taken on-site or via distance learning. Many artists from Taranaki have trained through TLC. Students at TLC can gain NZQA qualifications in creativity. The New Zealand Certificate in Creativity (NZQA Level 4) is open entry and provides a pathway to the Diploma Level 5 and 6 qualifications. You can view the new Prospectus for 2023/24 [here](#).

TLC Campus Tours: A great way to discover what's on offer. Tours are open to individuals or small groups. If you would like to book a tour please call 0800 278 769 or contact via email.

TLC Newsletter - Stay in the loop of art exhibitions, classes and events. Sign up [here](#).

Any questions or for further information, phone 0800 278 769 or Email admissions@tlc.ac.nz

Creative New Zealand – Funding Support



Creative New Zealand is the national arts development agency developing, investing in and advocating for the arts. Check out the [Funding calendar](#) for an overview of the support available. [Sign up](#) to receive news and updates via email. [Arts Grants](#) offer short-term project funding for New Zealand artists, arts practitioners and arts organisations (including groups and collectives). This funding enables more sustainable careers, encourages innovation and the development of art practice, and provides opportunities for diverse communities to access the arts.

For updates and information on all Creative NZ funding, visit the [website](#)



The Big Idea

The Big Idea is an online hub for artists of all genres. The Big Idea provides you with news updates, the latest jobs and opportunities and events as well as ideas and inspiration from across the creative industries to help you create your own success. The Big Idea is the largest, leading online resource for the arts in New Zealand.

Website: www.thebigidea.nz

Would you or your group like to have information included in the next edition of Te Tohu a Toi – STATE OF THE ARTS?

Please send concise text and photographs for the Winter Edition (June, July, August 2023) to: Michaela Stoneman, Arts Co-ordinator: michaela.stoneman@stdc.govt.nz

Send information by:
Publish date:

Monday 22 May 2023
Thursday 1 June 2023

To unsubscribe to *State of the Arts*, please [email Unsubscribe](#) in the subject line.






Silent auction for the



Gover St Gallery
10th March - 31st March 2023

KIWIS HELPING KIWIS

WAIATA FOR WAIROA
Cyclone relief fundraising gig
FEATURING

Karew Clarke
Farley Hokopaura & Pete Norris
Celine Filbee

FRIDAY 10TH MARCH
HAWERA REPERTORY ROOMS
59 COLLINS ST, HAWERA
7 PM KICK OFF
TICKETS \$30, TO BOOK
TEXT JUDE 0272 759 750

100% of tickets sales go to helping Wairoa families rebuild