

Te Tohu a Toi

STATE OF THE ARTS

South Taranaki Arts Bulletin # 48

Spring 2022

| [Art News](#) | [Opportunities](#) | [Exhibitions](#) | [Art Events](#) |

Welcome to our Spring edition of *State of the Arts*.

A new community art project on the coast has been happening over the winter months, which will result in a new public artwork on Surf Highway 45 later this year. I've been facilitating the **Ōpunakē Skatepark Project** with the awesome staff and students from the Ōpunakē Art Dept at Ōpunakē High School. A series of plywood panels are currently being designed and painted by local youth to revitalise their skatepark, while learning new skills and gaining NCEA credits. Students will also have the opportunity to paint areas onsite in Term 4. Funding support from the Taranaki Coastal Community Board and South Taranaki District Council has enabled the creative project to go ahead, as well as making some structural improvements to ensure the park is safe. The project is a good example of collaboration between locals schools, Council and community. Check out the [Ōpunakē High School Art Instagram](#) to see some of the awesome programmes they are offering.



Artwork by Te Arikini Herewini from Ōpunakē High School

Congratulations to Bonita Bigham (Ngāruahine and Te Atiawa) for her appointment to the Arts Council of New Zealand Toi Aotearoa. Bonita proudly lives in Manaia and has always been an amazing cheerleader for the arts in her roles at South Taranaki District Council. She is a founding member of Toi o Taranaki Ki Te Tonga, a Māori artists' collective in Taranaki and gained masters degrees in Fine Arts and Māori Visual Arts. Bonita is a passionate arts advocate and scholar who centres her research and output on cultural themes and practices, including raranga, tāniko, and kowhaiwhai. She says she is privileged to be appointed to Creative New Zealand's Arts Council by Minister Carmel Sepuloni. "I hope to provide insight and advice to the council from my variety of governance experiences, including the past 12 years in the local government sector, which incidentally is the biggest investor in the arts in Aotearoa." "I also have the important perspective of a practising wahine Māori artist who is heavily involved in elevation and promotion of Māori art here in Taranaki". Ka rawe e hoa!

Please continue to support and enjoy our local artists, galleries, groups, projects and events. Thank you for your positivity, strength, commitment and vision to keep the arts alive and thriving. Get in touch with me via email if you need advice or support with applications or help to realise a creative project. Take care and keep creating!

Ngā mihi, *Michaela*

Michaela Stoneman | Arts Co-ordinator | South Taranaki District Council | 0800 111 323
michaela.stoneman@stdc.govt.nz | www.southtaranaki.com

South Taranaki Creative Communities Funding

The South Taranaki CCS Committee is comprised of representatives from South Taranaki Community Boards, our local arts community, Iwi and Youth.

The South Taranaki Creative Communities Scheme provides funding assistance for community-based arts activities in South Taranaki that meet one or more of the following funding criteria:

- **Broad community involvement** - A project that will create opportunities for local communities to engage with and participate in arts activities.
- **Diversity** - A project that will support the diverse arts and cultural traditions of local communities, enriching and promoting their uniqueness and cultural diversity.
- **Young people** - A project that will enable and encourage young people (under 18 years) to engage with and actively participate in the arts.

The current South Taranaki District Creative Communities applications closes on Friday 2 September 2022.

If you have an idea for a project or would like support with your application, you can email STDC Arts Coordinator Michaela for support – michaela.stoneman@stdc.govt.nz

For detailed information and forms, please visit the link [here](#)

Any enquiries to discuss an application, email funding@stdc.govt.nz or phone 0800 111 323 or 06 278 0555



Lysaght-Watt Trust Ronald Hugh Morrieson Literary Awards 2022

Awards Evening: 6.45 pm Wednesday 19 October 2022

TSB Hub, Hāwera

The Lysaght-Watt Trust Ronald Hugh Morrieson Literary Awards submission period has closed and the Award judges are busy selecting the 2022 finalists. The competition attracted over 160 entries this year, an increase of writers and poets from around the Taranaki Region participating. Short Story Section judge is Airini Beautrais, a poet, writer and educator who grew up in Auckland and Whanganui. She studied ecological science and creative writing at Victoria University of Wellington. In 2021, she won the Ockham New Zealand Book Awards Jann Medlicott Acorn Prize for Fiction for her collection of short stories, *Bug Week*. Poetry Section judge is Robert Sullivan (Ngāpuhi, Kāi Tahu). His eight collections of poetry include the best-selling *Star Waka* first published in 1999. Sullivan co-edited three award winning anthologies of Pacific and Māori poetry and gained a PhD on the writing of four indigenous poets from the Pacific. The leader of many tertiary creative writing programmes, Sullivan is joining Massey University this year, as Associate Professor of Creative Writing. The Lysaght-Watt Trust Ronald Hugh Morrieson Literary Awards celebrates its 35th year in 2022. For well over a decade, the Lysaght-Watt Trust has been a valued major supporter of the South Taranaki LibraryPlus and its programmes.



The Awards Evening is open to the public, please RSVP to entries@stdc.govt.nz by Wednesday 12 October 2022



Arts in the Park

10.00 am – 3.00 pm Saturday 3 December 2022

King Edward Park, High Street, Hāwera

Registrations are now open for artists and groups to take part in Taranaki's premier outdoor arts and crafts festival. Enjoy the large, pleasant, open environment of King Edward Park to exhibit, demonstrate and sell your arts or crafts - stalls are FREE! A walk through the Park is a voyage of discovery, including local musicians, food stalls, hands-on art activities for kids in the *Art Tipi* and much more. *Arts in the Park* offers an entertaining day for the whole whānau, offering an opportunity to support local artists and craftspeople by purchasing handmade goods to kick start your Christmas

shopping. Check STDC's Facebook page for updates.

Registration forms available soon from www.southtaranaki.com/artsinthepark

For more information contact South Taranaki District Events on 0800 111 323 or email events@stdc.govt.nz

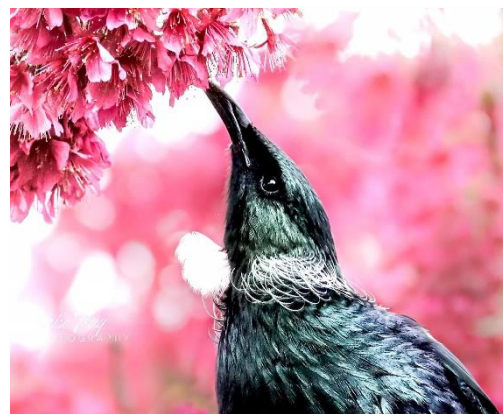
Arts Lease Programme – South Taranaki Artists

The South Taranaki District Council calls for visual art submissions from South Taranaki artists for lease and display in the Council's Administration Building in Hāwera. The Art Lease Programme was established in 1996 to support and nurture our creative community. The foyer gallery enables us to showcase a selection of work from our talented artists and offer their work for sale with no commission taken. To qualify for the Art Lease Programme, artists must reside within the South Taranaki District boundaries. Selected artists are paid a fee of \$150 for a year lease, which is paid in November. Please note: Only wall hanging artworks are eligible.

To submit artworks (up to 4 per artist), please include this information:

- Your name, address, phone number and email address.
- A clear photograph or scan of the artwork(s). *Digital files at least 1 MB file size, please.*
- Title, dimensions, medium and date of each artwork.

Email to the address below or post to: Michaela Stoneman, Arts Co-ordinator, South Taranaki District Council, Private Bag 902, Hāwera 4640 (or drop into the Albion Street office and attention to M Stoneman).



2021/22 Arts Lease artwork by Denise Flay

Closing date for submissions: 5.00 pm Monday 3 October 2022

For more information, please phone Michaela on 0800 111 323 or email: michaela.stoneman@stdc.govt.nz



Elektra – Friday Night Fever

6.00 pm – 9.00 pm Friday 23 September 2022

King Edward Park, Hāwera

Elektra is a community light event, taking over Hāwera's King Edward Park for South Taranaki's annual fire and light festival. Get the family together to stroll through the Park strewn with lights, groovy disco balls and flower power – for one night only! Entertainment includes poi and fire shows from *Highly Flammable* and music performances by *Mitch & his Guitar* on the main stage. Kids will enjoy the *Glow Zone*, featuring glow-in-the-dark artworks by students from South Taranaki Creative Space and Art with Kerryn. Check out the circus play zone to learn skills including spinning plates, juggling, hoop, and poi with *Circus in a Flash Entertainment*. A range of food trucks will be onsite for a picnic dinner.

For more information contact South Taranaki District Events on 0800 111 323 or email events@stdc.govt.nz

Coastal Arts Trail

Be one of the first to experience the newly launched Coastal Arts Trail, stretching from Taranaki through to Whanganui and Manawatū. This self-drive journey extends over 250 kilometres, allowing travellers to take in an eclectic mix of arts and creative experiences along the way at your own pace. The trail is the longest of its kind in the southern hemisphere, and is a must-do this spring. If you're looking to experience the trail in style and really immerse yourself in all things creative, [why not book out Vallery?](#) Vallery is a world-first art gallery campervan that offers a completely immersive art experience, designed specifically for the Coastal Arts Trail in partnership with Quirky Campers NZ. You can sleep under art, dine with art, and recline on art, all integrated in a comfortable and practical way.

For more information or to plan your trip, visit: coastalartstrail.nz

Artwork by Pātea artist Gabrielle Belz on the ceiling of the new Coastal Art Trail campervan, Vallery.



Taranaki National Art Awards 2022

Sinclairs Events Centre, Tasman Street, Ōpunakē

Entries Close: Friday 16 September 2022

Awards Ceremony: 7.00 pm Friday 28 October 2022

Exhibition: 10.00 am - 4.00 pm, 29 October - 5 November 2022

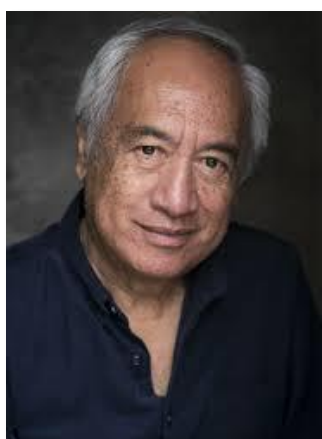
2022 celebrates the 20th anniversary of this iconic event, held in Ōpunakē. Entries are now open for this annual national visual arts competition. Cash prizes are offered in seven categories: Painting, Taranaki Artists, 3D, Works on Paper, Fibre Art, Tō Taranakitanga and Photography. Entry is \$25 per artwork; artists can only enter each category once but can enter up to three categories. This long-standing event would not be possible without the generous support of sponsors and the Ōpunakē community. All entries are displayed in the exhibition and most works are for sale, offering a unique opportunity to purchase original artworks. The exhibition coincides with the Region's garden festivals and the Taranaki Arts Trail. Judges for 2022 are Karl Chitham, Director of the Dowse Art Museum and Leafa Wilson, independent Curator and Cultural Activator at Creative Waikato. Artists can enter online. Check for updates and news on Facebook.



Winner of 2020 TSB Community Trust Painting Award, Flyover by Judy Woods

Facebook: [Taranaki National Art Awards](#)

Please visit the website to find out more and enter: www.taranakiartawards.co.nz



NZSA Regional Roadshow – Taranaki

Saturday 10 September 2022, 9.00 am - 6.00 pm

St Joseph's Catholic Church Hall, 106 Powderham Street, New Plymouth,

The New Zealand Society of Authors / Te Puni Kaituhi O Aotearoa (PEN NZ Inc) Regional Roadshow brings professional development to the regions. NZSA Regional Roadshows are organised in partnership with local NZSA branches to build collegiality, connection, and new opportunities for professional development in local settings. The events are lively, inclusive, stimulating, and practical and offer something for writers across the spectrum from beginners to established. Sessions will cover craft, publishing, marketing and much more. An opening kōrero with Vanda Symon and Witi Ihimaera (pictured left) will be followed by workshop with Rob Hack, Vanda Symon; David Hill and Mikaela Nyman. The event concludes with refreshments and networking at The Snug Lounge.

This event is open to NZSA members and non-members. If you are not a member, you can choose Adult + NZSA Membership or Student + NZSA Membership to receive a discounted membership for the year.

For more information and to register, visit [here](#)

Website: www.authors.org.nz | Facebook: [NZ Society of Authors, Taranaki](#)

Creative Taranaki – News

Call for Trustee Nominations

Creative Taranaki Trust (CT) is looking for three new trustees who are motivated to help CT chart the next phase of its development and champion the creative arts in Taranaki. The Trust are interested in expressions of interest from individuals with a complementary skillset to the founding trustees and with previous experience in one or more of the following areas: governance, law, business, marketing, finance, cultural management, Māori entrepreneurship, and strategic thinking. A knowledge of tikanga, mātauranga Māori and Te Reo would be an advantage. Applications close 5.00pm Monday 12 September 2022. [Download Trustee Role Description and Application here.](#)

Contractor Position: Arts Coordinator

Creative Taranaki is seeking applications for the contract role of Arts Coordinator. The purpose of this position is to support, advocate for and connect the arts, creative and cultural sector in Taranaki. The Arts Coordinator will build and maintain strong relationships and networks within the community, working autonomously and reporting back to the Trust. Applications close 5.00 pm Monday 12 September 2022. [Download full job description here.](#)

[Sign up for Creative Taranaki Newsletter here.](#)



For more information and updates - Facebook: [Creative Taranaki](#) | Email: trust@creativetaranaki.org

Taranaki Arts Trail 2022

9.30 am - 4.30 pm 28 / 29 / 30 October & 4 / 5 / 6 November 2022

Arts Trail Preview Exhibitions: 26 August - 18 September 2022, Percy Thomson Gallery, Stratford
17 October - 12 November, Lysaght Watt Gallery, Hāwera
21 October - 20 November, Gover Street Gallery, New Plymouth

2022 is the ninth year of this popular event, running over two consecutive weekends during the Taranaki Garden Festivals, featuring 79 artists from around the Maunga / Mountain. Pick up a brochure from i-SITEs and galleries or check out the website to plan which studios to visit. Some studios are open for the whole 10 day festival, free admission for all. Taranaki Arts Trail and Manawatū Arts Trail are joining forces in an Artist Exchange, featuring artists Beth McGill and Mark Ingley at Gover Street Gallery.



South Taranaki Arts Trail Artists 2022

Ōpunakē: Claire Jensen, Rhonda Crawford, Viv Davy, Karen Dey

Eltham: Dan Mills, Lindsay Maindonald, Mark Bellringer (pictured right)

Manaia: Krismarlianti Donaldson

Kapuni: Penny Brooks

To view artist listings, download brochure and more information, visit: www.taranakiartstrail.co.nz

Ōhawe Creative Collective



28 October - 6 November 2022

Open: 9.00 am - 4.00 pm daily, Ōhawe Hall, Ōhawe Beach

A pop-up collective of locals artists at Ōhawe Hall, coinciding with the Region's Garden Festivals and the Taranaki Arts Trail. Just 8km north of Hāwera along Surf Highway 45, Ōhawe Beach is a great spot for a picnic and to enjoy the South

Taranaki coastline. Local artists present art, carving, crafts, plants and produce in the local community hall. Artists are Caryl Murray, Amy Thompson, Tracey Christodoulou, Myron Bent and Ange Quin. Free admission, wheelchair accessible.

South Taranaki Creative Space

South Taranaki Creative Space is a community-focused creative hub, providing a welcoming space to meet, interact, learn new skills and network with other creative people. The *Community Unity Gallery* has exhibitions changing monthly. Up to two artworks per artist, \$5.00 koha hanging fee, no commission taken on sales. All welcome, please get in touch to exhibit.

Creative After School Kids Art Classes

Classes cover a wide range of mediums to help young creatives with their artistic development by exploring different ideas and techniques. Designed for students who have a genuine interest and a willingness to learn art and creativity and attend regularly.

Creative Adults Art - Beginners: Thursdays 6.30 pm - 8.30 pm

Creative Adults Art - Experienced: Tuesdays 6.30 pm - 8.30 pm

SATURDAY WORKSHOPS: A great variety of regular workshops available. Check out Facebook updates for details. Full details and registration process will be posted on the South Taranaki Creative Space Facebook page.



41 Princes Street, Hāwera | Phone or text: 027 361 6930

Facebook: [South Taranaki Creative Space](https://www.facebook.com/southtaranakicreatespace) | Email: southtaranakicreatespace@gmail.com

Virtual TART - News



September Exhibition: Mundus - Dorothy Andrews and Jenny Bielawski

Featuring works by two artists from back-country Taranaki. *Painting by Dorothy Andrews*

The Last Saloon – Open invitation to Artists.

A sudden gap in the Virtual Tart's exhibition calendar in October 2022 offers the opportunity artist to interpret the title 'Last Chance Saloon' in any medium. Send one image by 20 September, with as much or as little text as you wish. \$10 fee to participate.

For more information and to view exhibitions, visit www.tart.co.nz

Oral Histories of South Taranaki

Opens 3 October 2022

An audio-based oral history archive that preserves the intangible heritage of South Taranaki. This project enabled members of the public to record their own stories to educate our rangatahi, and ourselves. Capturing stories of our District and connecting people and communities with the rich history of South Taranaki.

Interconnected: Pasha Clothier

17 September - 15 October 2022. Whakatau: 10.00am Saturday 17 September 2022

An exhibition by Pasha Clothier, presenting an interconnected world where contemporary creative works cross-reference Tahitian whakapapa, ancient imagery, and the need to connect to species. Hitiarevareva was colonised as Pitcairn Island, and the story unfolds from the artist's daughter, to tupuna in 1790. Presenting an interconnected world view, typical of Polynesia, the exhibition will highlight ethical approaches that are central to the future, working against climate change.

Heritage Month: Conservation Open Day

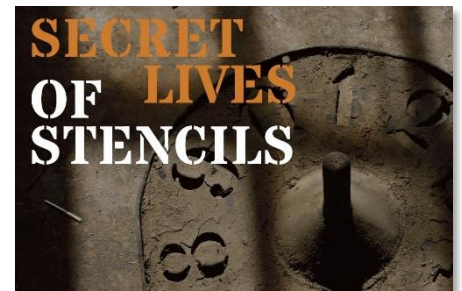
10.00 am - 2.00 pm 17 October 2022

Susanne Grieve-Rawson will be providing preservation advice on heritage items such as collectibles, family heirlooms and taonga. The public are invited to bring in a maximum of two objects: no dangerous or hazardous materials please. Susanne will also have a booth to learn about science and art in conservation practices.

Secret Lives of Stencils

26 October - November 2022

Supporting Taranaki's Heritage Month, this exhibition tells the stories of old shearing shed practices producing some of the country's early export brands and celebrates the life and 150 year history of the New Zealand wool bale stencil.



Aotea Utanganui - Museum of South Taranaki, 127 Egmont Street, Pātea | Phone: 06 273 8354

Facebook: Aotea Utanganui | www.museumofsouthtaranaki.wordpress.com

Email: museum@stdc.govt.nz | Open: 10.00 am - 4.00 pm Monday – Saturday



Creative Art Classes - Pātea & Waverley

Waverley artist Jenni Corbett is facilitating free Creative Art Classes for youth again in Pātea and Waverley, with funding support from South Taranaki Creative Communities and donated art supplies. Three local creative adults are generously volunteering their time to help with tutoring - Jenni Clarkson, Jenna Wakeling and Sally Newland. Classes are held at 3.00 pm on alternate Tuesdays at St Joseph's School Pātea and Waverley School. Sessions incorporate a mix of art and craft activities, as well as sending students home with fun, creative activities. The response to the classes has been very positive, a great opportunity for youth in rural areas.

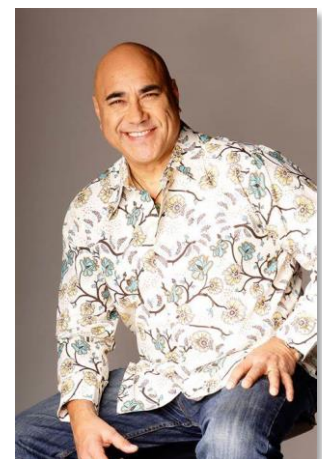
For more information: Email Jenni Corbett - jennicorbettart@gmail.com

Waverley Summer Jam

4.00 pm - 8.00 pm Saturday 26 November 2022

Dallison Park, Waverley

A free family event presented by the Waverley Chamber of Commerce. The community is invited to special Christmas celebration in Waverley hosted by Frankie Stevens. Enjoy music and entertainment in Dallison Park - pack a picnic, bring a group of friends and family and enjoy the later afternoon/evening summer sunshine. Great spot prizes, dancing, singing and fun for all. Talented performers including the Diamond Divas, Sophie Toyne, Pātea Maori Club and many more. Sponsored by Whanganui Insurance Brokers. Check the Facebook page for updates.



Facebook: Waverley Summer Jam | Email wavsumjam@gmail.com

Gallery Pātea – Spring Exhibitions

Youth Nature Mural / Jenni's Abstracts

10 November - 7 December 2022

An exhibition by Jenni Corbett, Waverley artist children's creative workshops tutor in Waverley and Pātea, presents some of her own abstract artworks. Also featuring a collaborative mural made by students on small canvases, based on representations of local flora and fauna.



Kaitiakitanga - Curated by Rosanne Oaks

1 - 29 October 2022

Kaitiakitanga invites people to form and maintain relationships with the environment in which they live. A group exhibition showcasing the talents of local artists through painting, pottery, jewellery, printmaking, weaving, stonework and photography, expressing relationships with the environment and demonstrating the use of natural materials in artistic expression.

Gallery Pātea, 56a Egmont Street, Pātea

Open: 10.30 am - 2.30 pm Wednesday - Saturday or by appointment

For more information text Gabrielle Belz 021 0813 8355 | Facebook: Gallery Pātea | Email gallerypatea@gmail.com



Hāwera Repertory News

A Christmas Crack Up

23 November - 3 December 2022

Repertory House, 59 Collins Street, Hāwera

Presenting an end of year production of an assortment of one-act plays.

For more information contact hawerarepertory@gmail.com or visit www.hawerarep.org

Around the Mountain - Organ Recital Series

Wesley Methodist Church, 45 Regent Street, Hāwera

11.15 am 28 September, 26 October, 30 November 2022

Director of *Music to Taranaki Community & Cathedral*, Christopher J. Luke presents organ recitals at the Wesley Methodist Church in Hāwera. The 1916 Alfred Brake pipe organ is historic and unique to New Zealand, listed with the New Zealand Organ Preservation Trust with a Category 1 certificate. The recitals are supported by the Toi Foundation and South Taranaki Creative Communities. Gold coin donation entry, refreshments following the recital. All welcome.

For more information - Email music@taranakicathedral.org.nz



Everybody's Theatre - Ōpunakē



Check the website for screenings and special events.

Special Event: A One Night Stand

8.00 pm Saturday 10 September 2022

DIY Comedy presents 'A One Night Stand' at Everybody's Theatre. Featuring MC Alexander Sparrow and top NZ comedians Pat Goldsack, Callum Wagstaff and Chardè Heremaia. Supported by Rendezvous. Tickets available from Kiwi Ticket - \$20 Advance, \$30 on the door. Supported by South Taranaki Creative Communities and the One Foundation. www.diycomedynz.com

Boutique Nights – 7.00 pm, first Sunday of the month

Sunday 4 September 2022: *Muru*

Sunday 2 October 2022: *More the Gold: Dame Valerie Adams*

Sunday 6 November 2022: *Three Thousand Years of Longing*

**Everybody's Theatre, 72 Tasman Street, Ōpunakē | Phone: 027 383 7926
Website: www.everybodystheatre.co.nz | Email everybodystheatre@gmail.com**



Lysaght Watt Gallery – Spring Exhibitions

Capturing the Fall: Brad Mosen & Keeley Eastwood

A Shared Inspiration: Rosanne Oakes & Elizabeth Harrison

Until 17 September 2022

Te Māra Rākaunui o Aotearoa/National Arboretum of NZ is the focus of this exhibition by Whanganui photographer Brad Mosen and printmaker Keeley Eastwood. The exhibition features their new tree and leaf work inspired by a family trip to the Arboretum last autumn as well as other nature-inspired works. South Taranaki printmakers Rosanne Oakes and Elizabeth Harrison join forces to showcase their recent designs, including drypoint, intaglio, woodcuts and other mixed media works.

Printmaking by Keeley Eastwood

Colour Our World: Hāwera Art Club

19 September - 15 October 2022

A group exhibition featuring an eclectic mix of artworks by Members of Hāwera Art Club, including oils, acrylics, watercolours and sculpture. New members of all age and abilities are welcome – the Club meets on the first Friday of every month at the Salvation Army Building, Regent St, Hāwera. An informal group of like-minded art enthusiasts meets at the same venue on Fridays. Contact Cherol Filbee for more information - Email: icemaids1@orcon.net.nz

Taranaki Arts Trail Artist Preview / South Taranaki Stitch Guild: It's All About Thread

17 October - 12 November 2022

Taranaki Arts Trail Arts Trail Preview exhibition, scheduled prior to the event to promote a range of Trail artists. South Taranaki Stitchcraft Guild showcases the slow art of embroidery. In this biennial exhibition members will display a variety of embroidery pieces that reflect their wide range of interests and influences, ranging from whitework through to colourful cross stitch and everything in between. Also featuring handmade Christmas decorations, available for sale.

Elliot Collins: The Weight of Words

14 November - 10 December 2022

A solo exhibition, 'part examination of place, memory, and language and part abstract enjoyment of colour and poetry.' Presenting an interdisciplinary range of media including paintings, sculpture, photographs and video installation, the exhibition 'seeks to remain relevant to communities across diverse regions, and is set amongst people and objects who sit in the difficult places of history and memory that may help us live better lives today by revealing their stories and sharing their wisdom'.

Lysaght Watt Gallery 4 - 6 Union Street, Hāwera

Website: www.lysaghtwattgallery.co.nz | Facebook: Lysaght Watt Gallery

Winter Hours: Monday - Friday 10.00 am - 3.00 pm Saturday 10.00 am - 12.30 pm | Phone 06 278 7611

Quirky Fox – Art + Framing

Endling: Ruth Ju-shih Li

Opens 7 September 2022

Ruth Ju-shih Li is a Taiwanese-Australian artist whose works draw on her myriad of cultural and spiritual heritage, while exploring different ways of narrating both traditional and multicultural concepts of beauty, transcendence and the sublime as a cross-cultural language into the spiritual. This exhibition extends on the artist's continued fascination with time, life, death and the continuous cycle of life, change, decay and renewal.



Wild: Evan Heasman

Opens mid-October 2022

Evan Heasman, AKA Soju Shots, transports us to a world where nature has taken over and our native species are thriving. Combining water colour illustrations and digital collages.

Quirky Fox, 205a High Street, Hāwera | Phone: 06 278 6909

Open: Monday - Friday 10.00 am - 4.30 pm Saturday 10.00 am - 12 noon

Facebook: Quirky Fox: Art & Framing | Website: www.quirkyfox.co.nz

The Village Gallery – Spring Exhibitions

Recollections: Watercolours by Bjorn Grube

30 August - 23 September 2022

Presenting artworks by the late Bjorn Grube, a well known South Taranaki artist, generously donated to the gallery to raise funds through silent auction. Bjorn was a valued Member of the Gallery, volunteer sitter and enthusiastic supporter of Gallery working bees and fundraising events. Works on paper also available, cash and carry.



Takirua: Ashlee Robinson & Ivan Toopi

27 September - 21 October 2022

Opening Event: 4.00 pm Monday 26 September

A collaborative exhibition by Eltham artists Ashlee Robinson; painter, digital artist and Ivan Toopi; wood and stone sculptor. Inspired by their culture and the natural world, they seek to create art that embodies these ideas. Ashlee will be onsite as Artist in Residence each Saturday of the exhibition, painting and creating digital work. All are welcome to attend the opening event and meet the artists. Nau Mai, Haere Mai!

The Potters: Margaret Foley, Donna Hitchcock & Robyn Smaller

24 October - 18 November 2022

Three potters will be displaying works for the home and garden along with decorative mixed media and novelty pieces. Coinciding with the Taranaki Garden Festivals and the Taranaki Arts Trail, a popular exhibition for over a decade. The Gallery is listed in the Fringe Festival booklet as a 'Place of Interest'.

Wrap It Up: Members of the Village Gallery

21 November - 16 December 2022

Final exhibition of 2022. Gallery volunteers take a break of four weeks over the holiday season.

Potential exhibitors are invited to apply to fill our programme of exhibitions for 2023. New Friends of the Gallery Members and Volunteers are always welcome.

The Gallery Shop offers Members an opportunity to display their items throughout the year. Cards, prints, paintings, pottery, photographs, jewellery and handmade accessories are available for sale.

The Village Gallery, 166 High Street, Eltham

Secretary, Donna Hitchcock – Phone 027 348 6826. Email: postiehitchcock@gmail.com

Winter hours: Tuesday – Friday 10.00 am - 2.30 pm. Saturday 10.30 am – 1.00 pm. Closed Sunday and Monday.

Facebook: [Village Gallery Eltham NZ](https://www.facebook.com/villagegalleryeltham) | Email: villagegalleryeltham@gmail.com

Forbes & Flay Studio

Botanical Drawing Art Club

11 September 2022, 10.00 am - 2.00 pm

Join Tabatha Forbes for a Sunday art class for those wanting to spend a few hours working on their plant drawing or continue on works started from previous classes. Cost: \$70 per class - Includes all materials. Discounts are offered to returning students.

Botanical Art/ Plantgirl & Co Pop-up Shop

Centuria Taranaki Garden Festival: 28 October - 6 November 2022

Open: 10.00 am - 2.00 pm, except Monday 31 October & Wednesday 2 November 2022

Private Art Tuition Available - Forbes & Flay Studio

Develop your creative confidence in private classes with Dr Tabatha Forbes DocFA, MFA (Hons). Tabatha has worked with NCEA art students and those needing to focus their artistic skills or develop new ones. All levels welcome, ages 16plus pref. For more information and free consultation please email Tabatha directly.



Forbes & Flay Studio, 40 Tasman St, Ōpunakē | Email: botanicalartclass@gmail.com | Facebook: Forbes and Flay



from out of the blue studio gallery – Exhibitions

Sarah Millington - A Hole Where My Heart Should Be

Louise Cook - Saori Style Weaving & Members of New Plymouth Embroiderers' Guild

Until 26 September 2022

This curated collection explores enduring and time honoured textile arts and putting a modern day spin on their use. The embroiderers use many traditional materials and stitch types that have been passed down through generations of stitchers. Saori Style weaving has been around since 1969 when it was established in Japan as a way of 'empowering all individuals to create and express themselves freely through hand-weaving'. Louise's woven works celebrate her joy in the natural world and her sense of creative play as she works on her looms. Louise will be Artist in Residence for several weeks during her exhibition, with her loom installed in the gallery.

Viv Davy - The Cupboard Collection

29 September - 7 November 2022

Annual solo exhibition for The Taranaki Arts Trail featuring a wide range of artworks showing the scope of Davy's professional textile practice. The gallery will be open for extended hours during the Arts Trail.

Side by Side: Jennifer Patterson and Jeanette Gilles

10 November - 19 December 2022

A joint exhibition by creative twins, including art quilts, handmade books, botanical and rust dyed works and more. It is a wonderful thing to see the vast differences in expression between twins, both of whom have well established reputations for their art practices. A special occasion having them exhibiting together.

SPRING WORKSHOPS

Sewing Handwoven Fabric: Saori Style.

Fabric Collage: Getting to Know Your Sewing Machine - Overcome the fear of the machine!

Slow Fashion: Remaking old favourites as an environmentally aware practice.

An Introduction to Paper Folding: Make Christmas baubles.

Full details and registration via the website. Check website for extended hours/pop-up demos for the Taranaki Arts Trail.

Contact: Viv Davy. Phone: 021 407 424 | 18 Halse Place, Ōpunakē

Website: www.fromoutofthebluestudiogallery.com | Open: 1.00 pm – 5.00 pm Thursday – Monday or by appointment

Facebook: [from out of the blue studio gallery](https://www.facebook.com/fromoutofthebluestudiogallery) | Instagram: [threadthinker](https://www.instagram.com/threadthinker) | Email: silktangles@me.com

Percy Thomson Gallery – Spring News & Exhibitions

EMERGENCE Award for Young Taranaki Artists 2022

Congratulations to Brett Morrison, who won the Supreme Award with her photograph 'Somewhere South' (2022). Brett took home the Winner's trophy (graphics by Haoro Hond), \$2,000 cash prize (kindly supported by Taranaki Foundation, through the Hauora Fund) and a solo exhibition at Percy Thomson Gallery in 2024. Online Catalogue and full results available on the Gallery website.

Taranaki Arts Trail Preview Exhibition - Until 18 September

Adam Portraiture Awards

23 September - 16 October 2022

Percy Thomson is the first stop in the National Tour. Featuring 38 contemporary New Zealand portraits, including all Taranaki finalists.



Percy's Place is the gallery's boutique art shop, open 10.30 am – 3.30 pm on Weekdays, and 10.30 am – 2.30 pm on Weekends. The Gallery is currently seeking volunteers to assist with running the shop. The store is full of creations by local artists. If you are interested in spending a day or two each month in the store, please contact the Gallery.

Exhibition Proposals: 2024

Artists are invited to submit proposals for solo or group shows in 2024. Email: director@percythomsongallery.org.nz

Percy Thomson Gallery, Miranda Street, Stratford | Director: Laura Campbell | Phone 06 765 0917

Open: Monday - Friday 10.30 am - 4.00 pm. Saturday - Sunday 10.30 am - 3.00 pm

Website: www.percythomsongallery.org.nz | Facebook: Percy Thomson Gallery



Fenton Street Art Collective

Twists & Turns: 9 September - 6 October 2022

Jeweller Sally Laing and her creative sons, Jack & Gabe bring together jewellery and photography that reminds us that life has a way of twisting and turning in unexpected directions.

MB Stoneman : 7 October - 17 November 2022

Pātea printmaker exploring nature, words and the human condition. Woodcut, etching, mezzotint, cyanotype and letterpress.

Plane Crazy: 18 November - 8 December 2022

Plane crazy pilots Bernice and Les Hintz bring their delightful illustrations of their aeronautical "Emma" books to Fenton Street.

**11 Fenton Street, Stratford | Facebook: Fenton Street Art Collective | Email: fentonartscollective@gmail.com
Open: 9.00am – 2.00pm Monday – Saturday, 10.00am – 2.00pm Sunday | Phone: 021 0299 2839**

Puke Ariki - Spring Exhibitions

Impermanence: The Tongapōrutu Coastline - A twenty-year Odyssey Until 27 November 2022, Lane and Wall Galleries, Level 2.

Taranaki-based photographer and self-described archivist Pat Greenfield records history as it happens. Here she presents a 20 year photographic and scientific journey of discovery into the effects of climate change along the Taranaki coastline, with an emphasis on Tongapōrutu in North Taranaki.



Nekenekehia Tukua: A WharehokaSmith Exhibition Until 12 March 2022

Education: The Role Toi Māori Could Play Thursday 13 October 2022: 5.00 pm - 8.00 pm

Join us for an evening of conversation and education at Puke Ariki as we host the first of three wānanga that will build on the ideas presented in our latest exhibition Nekenekehia Tukua. This wānanga is perfect for Taranaki-based educators, administrators and those interested in joining the conversation surrounding art education and the involvement of Toi Māori beyond the 'fine art' space.

Art & Design: The Design Space for Toi Māori Thursday 27 October 2022: 5.00 pm - 8.00 pm

This wānanga will ask what it means to reclaim the design space for Toi Māori and re-establish Toi Māori in the built environment. With leaders from the art, design and architecture industries, we will explore copyright, IP, data sovereignty and access. We invite Taranaki-based artists, designers and architects to join us as we consider these topics.

GLAM: Collaborative Engagement with Māori Artists

Thursday 10 November 2022: 5.00 pm - 8.00 pm

This wānanga will focus on how the GLAM sector (Galleries, Libraries, Archives and Museums) can engage collaboratively with Māori artists.

This series of wānanga are free. Visit the museum [Website](#) for more information or to register.

**Puke Ariki, 1 Ariki Street, New Plymouth | Phone: 06 759 6060 | Open: 10.00 am - 5.00 pm 7 days | Free Entry
Website: www.pukeariki.com | Facebook: Puke Ariki: Museum-Library-Visitor Information**

Creative New Zealand – Funding Support

Creative New Zealand is the national arts development agency developing, investing in and advocating for the arts. Check out the [Funding calendar](#) for an overview of the support available. [Sign up](#) to receive news and updates via email. [Arts Grants](#) offer short-term project funding for New Zealand artists, arts practitioners and arts organisations (including groups and collectives). This funding enables more sustainable careers, encourages innovation and the development of arts practice, and provides opportunities for diverse communities to access the arts.



For updates and information on all Creative NZ funding, visit the [website](#)

Gover Street Gallery – Exhibitions & News

10 October - 10 November: *Marguerita Iremonger / Derek Hughes*

21 October - 20 November: *Taranaki Arts Trail Artists*

14 November - 23 December: *David Rogers / Brett Williams / Have a Go!*

WORKSHOPS

Mizuhiki Jewellery Workshop with Midori Brown

1.00 pm – 3.00 pm 11 September 2020

Learn this traditional Japanese craft. \$45 pp everything supplied – booking essential



Registrations: Have a Go! Exhibition open on 1 October 2022 – free canvas, any subject, any medium, one size.

28 October - 6 November: Gover street Gallery is the Taranaki Arts Trail Information Hub - for brochures, maps, directions, advice.

4/5/6 November: Manawatū Artist Exchange - [Beth McGill – Feather painter feathers](#) [Marcus Ingley - Glass Blower](#)

19 Gover Street, New Plymouth | To exhibit, register, enquire, contact Heidi on 06 757 4278
Open: Wednesday – Monday 10.00 am – 4.00 pm, Sunday 12 noon – 4.00 pm. Closed Tuesday
Facebook/Instagram: Gover Street Gallery | Email: goverstgallery@gmail.com



Spiegel Fest 2022

10 - 20 November 2022

Presented by Taranaki Arts Festival, Spiegel Fest is back for the first time since 2019 with an array of award-winning international artists and acts from across Aotearoa. Over ten incredible days, live music, comedy, circus and more will fill the impressive Crystal Palace Spiegeltent and other venues around Taranaki with entertainment for all ages. South Taranaki will host two Spiegel Fest performances - Saturday 12 November at Hāwera Memorial Theatre and Saturday 19 November at Everybody's Theatre, Ōpunakē. The programme and entire lineup will be announced on Thursday 15 September. Proudly sponsored by Baker Tilly Staples Rodway.

Festival information and tickets: www.spiegelfest.co.nz

Follow Taranaki Arts Festival on Instagram and Facebook for all festival updates



The Big Idea

The Big Idea is an online hub for artists of all genres. The Big Idea provides you with daily news updates, the latest jobs and opportunities, events as well as ideas and inspiration from across the creative industries to help you create your own success. The Big Idea is the largest, leading online resource for the arts in New Zealand.

Website: www.thebigidea.nz

Would you or your group like to have information included in the next edition of Te Tohu a Toi – STATE OF THE ARTS?

Please send concise text and photographs for the Summer Edition (December 2022, January, February 2023) to: [Michaela Stoneman, Arts Co-ordinator: michaela.stoneman@stdc.govt.nz](mailto:michaela.stoneman@stdc.govt.nz)

Send information by:

Monday 21 November 2022

Publish date:

Thursday 1 December 2022

To unsubscribe to *State of the Arts*, please [email Unsubscribe](#) in the subject line.