

The South Taranaki District is now at COVID-19 Alert Level 1. Find out more at [www.covid19.govt.nz](http://www.covid19.govt.nz)

## Economic Growth and Sustainability at Heart of Council's Long Term Plan

Stimulating economic growth, town centre upgrades, environmental sustainability and keeping rates affordable are the key themes guiding South Taranaki District Council's 2021 – 2031 Long Term Plan which was formally adopted at Monday's (28 June) Ordinary Council meeting.

For South Taranaki ratepayers, the result is an average rate increase of 3.99% each year over the next ten years, the lowest in the region.

The Plan was adopted following a month of public consultation which saw 215 public submissions made. Public support was strong for the Council's plans to undertake town centre upgrades in Ōpunakē, Manaia, Pātea, Waverley and Eltham; complete all three stages of the South Taranaki Business Park; and to fully fund an Environment and Sustainability Strategy over the next ten years.

Based on submissions, Councillors also agreed to put an additional \$100,000 each year towards resourcing the Horticultural Services team (in Year 2 and 3), \$10,000 extra each year towards the Rural Halls Grant Fund and \$60,000 to be ring fenced for the Rotokare Scenic Reserve Trust.

South Taranaki Mayor Phil Nixon says the Council's vision is to make South Taranaki the Most Liveable District.

"Over the past decade we've focussed on upgrading the District's water infrastructure, key community facilities and implementing projects to make South Taranaki a desirable place to live and do business. We now have a much improved water network and, since our last Long Term Plan three years ago, we have progressed the Hāwera Town Centre Redevelopment, Te Ramanui o Ruapūtahanga and the Nukumarū Station Road extension projects," says Phil.

"Our focus for the next ten years is to complete these key



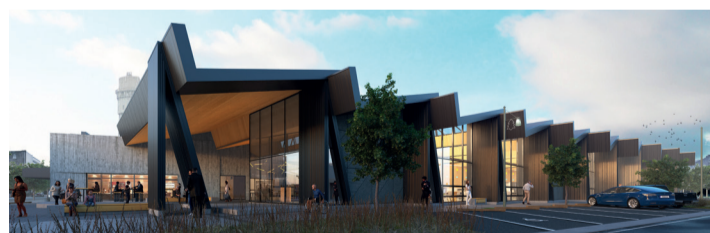
Updated fees and charges for the new financial year can be found online at [www.southtaranaki.com](http://www.southtaranaki.com)

projects, continue to upgrade our three waters infrastructure with a focus on wastewater, implement our Environment and Sustainability Strategy and create the conditions that encourage sustainable economic growth in the right places, with projects such as the Business Park and Town Centre Upgrades."

"At the same time we know we need to keep rates at an affordable level, so we are funding our key projects with a combination of loans, external funding sources and earnings from the Long Term Investment Fund, rather than simply through rates," he says.

"We believe our Plan strikes the right balance between progress, affordability and providing the services and facilities our communities expect."

## Site clearance starts for Te Ramanui o Ruapūtahanga in Hāwera



Demolition work is underway for South Taranaki's new \$12.5m library, arts and culture centre - Te Ramanui o Ruapūtahanga. Project Co-ordinator, Phil Waite, says work has started removing material from inside the buildings and demolition of the structures on the corner of Hāwera's Regent and High Streets will follow.

"I'm excited that we're finally starting the physical works. There will be some noise and disruption during both the demolition and construction phases but I'm confident people will appreciate that's unavoidable and will be focussed on the bigger picture," says Mr Waite. "There will be times (like when verandas and street-front walls are being demolished) when the footpath and parking areas around the site will be closed.

"The Riddiford Street carpark will also be unavailable as contractors are using this space for their buildings," he says. South Taranaki District Mayor, Phil Nixon says Te Ramanui o Ruapūtahanga, the Council's key anchor project in the Hāwera Town Centre Upgrade, is designed to create vibrancy, stimulate economic activity and improve connectivity for the community and visitors to the District.

"Te Ramanui will not simply revitalise - it will transform the town centre," says Mayor Nixon. "The multi-functional, community hub will provide residents and visitors with a wide range of services, information, cultural and educational resources including a library, community meeting rooms, art gallery, i-SITE, café and public toilets. Te Ramanui will be a catalyst for driving change and increasing investment in the town centre." Mayor Nixon says over half the funding is coming from external sources with major contributions from the Government's Shovel Ready Projects Fund and the Toi Foundation. Council's contribution is loan-funded with earnings from the Long Term Investment Fund so there is no impact on rates.

### Upcoming meetings

**Eltham-Kaponga Community Board**  
Monday 12 July, 10.30am  
Kaponga War Memorial Hall,  
Victoria Street, Kaponga

**Te Hāwera Community Board**  
Monday 12 July, 1.30pm  
Te Korowai o Ngāruahine Trust, High  
Street, Hāwera

**Taranaki Coastal Community Board**  
Tuesday 13 July, 2.30pm  
Ōkaiawa Town Hall, Ahipaipa Road,  
Ōkaiawa

**Pātea Community Board**  
Wednesday 14 July, 4pm  
Hunter Shaw Building, Egmont  
Street, Pātea

**Iwi Liaison Committee**  
Wednesday 21 July, 10am

**Environment and Hearings Committee**  
Wednesday 21 July, 4pm

*Unless otherwise stated, meetings are held in the Council Chamber, Albion Street, Hāwera*

### KidzBiz now available

Head to [www.southtaranaki.com](http://www.southtaranaki.com) to check out the latest edition of KidzBiz, the one-stop-shop for all school holiday activities happening in Council facilities throughout the District.



### Representation Review

Don't forget to let us know what you think about how you want to be represented in the next Local Body Elections. Read all about it at [www.southtaranaki.com/rep-review](http://www.southtaranaki.com/rep-review)