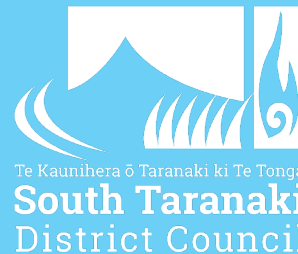


# 2023/24 Greenwaste Collection Calendar



## Ōpunakē - Wednesday fortnightly collection

Ensure bins are placed at the kerbside before 7.30am on collection day

**October '23**

Su	M	T	W	Th	F	Sa
1	2	3	4	5	6	7
8	9	10	11	12	13	14
15	16	17	18	19	20	21
22	23	24	25	26	27	28
29	30	31				

**November '23**

Su	M	T	W	Th	F	Sa
			1	2	3	4
5	6	7	8	9	10	11
12	13	14	15	16	17	18
19	20	21	22	23	24	25
26	27	28	29	30		

**December '23**

Su	M	T	W	Th	F	Sa
31					1	2
3	4	5	6	7	8	9
10	11	12	13	14	15	16
17	18	19	20	21	22	23
24	25	26	27	28	29	30

**January '24**

Su	M	T	W	Th	F	Sa
	1	2	3	4	5	6
7	8	9	10	11	12	13
14	15	16	17	18	19	20
21	22	23	24	25	26	27
28	29	30	31			

**February '24**

Su	M	T	W	Th	F	Sa
				1	2	3
4	5	6	7	8	9	10
11	12	13	14	15	16	17
18	19	20	21	22	23	24
25	26	27	28	29		

**March '24**

Su	M	T	W	Th	F	Sa
31					1	2
3	4	5	6	7	8	9
10	11	12	13	14	15	16
17	18	19	20	21	22	23
24	25	26	27	28	29	30

**April '24**

Su	M	T	W	Th	F	Sa
	1	2	3	4	5	6
7	8	9	10	11	12	13
14	15	16	17	18	19	20
21	22	23	24	25	26	27
28	29	30				

**May '24**

Su	M	T	W	Th	F	Sa
			1	2	3	4
5	6	7	8	9	10	11
12	13	14	15	16	17	18
19	20	21	22	23	24	25
26	27	28	29	30	31	

**June '24**

Su	M	T	W	Th	F	Sa
30					1	
2	3	4	5	6	7	8
9	10	11	12	13	14	15
16	17	18	19	20	21	22
23	24	25	26	27	28	29

**July '24**

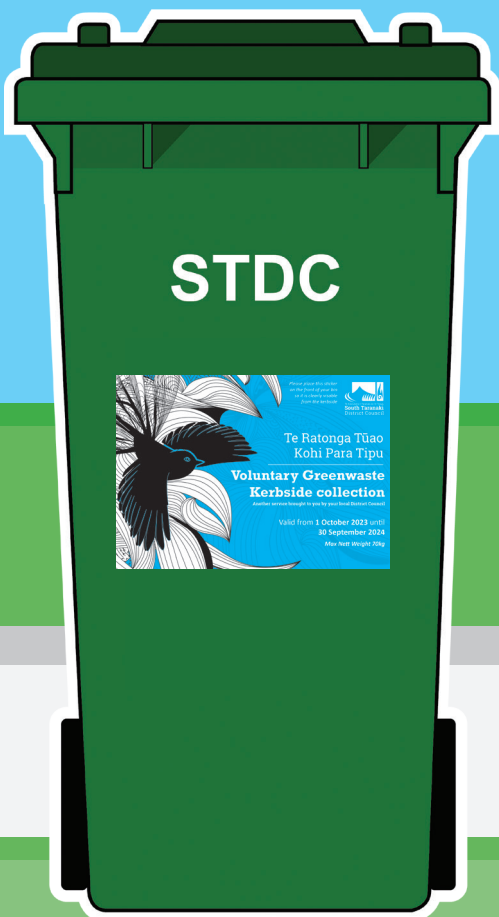
Su	M	T	W	Th	F	Sa
	1	2	3	4	5	6
7	8	9	10	11	12	13
14	15	16	17	18	19	20
21	22	23	24	25	26	27
28	29	30	31			

**August '24**

Su	M	T	W	Th	F	Sa
				1	2	3
4	5	6	7	8	9	10
11	12	13	14	15	16	17
18	19	20	21	22	23	24
25	26	27	28	29	30	31

**September '24**

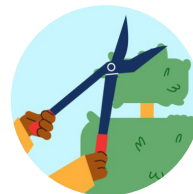
Su	M	T	W	Th	F	Sa
	1	2	3	4	5	6
7	8	9	10	11	12	13
14	15	16	17	18	19	20
21	22	23	24	25	26	27
28	29	30				



**Your greenwaste bin should be mostly made up of**



Lawn clippings



Prunings (untreated branches up to 15cm in diameter), garden waste and leaves.



**Only got grass clippings?**

Filling your bin with grass clippings (especially when damp/wet) makes it too heavy for our trucks to lift. Ensure you mix lighter items in.



**You can also add 10% of organic waste**

Kitchen scraps, fruit and veges, dairy products, meat, bones and fish, coffee grids and tea bags.



**Do not put into your greenwaste bin**

Flax, cabbage tree leaves, noxious weeds and invasive species, treated timber, saw dust, rubble, soil, human/animal waste, nappies, bioplastics, plastics of any sort, glass, cans, medical waste or liquids.