

# Southlink Extra

2020 Winter edition

Newsletter for South Taranaki ratepayers and residents



## Welcome to Southlink Extra

Hello everyone and welcome to the winter edition of Southlink Extra. This quarterly newsletter compliments our Council Southlink publication which appears weekly in the Taranaki Star and provides another way for us to keep you informed about what the Council is doing in our District.

Warm regards, *Phil Nixon, South Taranaki District Mayor*

## Keep up-to-date with our Antenno mobile app

Antenno is a mobile app that sends the user Council alerts and notifications about places and topics they care about. It is free to download and use, and it doesn't ask for any personal information or login details, so it's a nice easy way to stay informed. As well as receiving notifications Antenno allows users to report back to council on issues or feedback.

Antenno lets you choose the places you want to be alerted about, so you're not being alerted about things that don't matter to you. You can also opt out of topics (e.g. topics about dogs) that don't interest to you, so that you never receive those types of posts.

**HOW TO DOWNLOAD:** Download the app from the App Store or Google Play and save places you care about, such as home, work, your holiday home or school. What are you waiting for? Just search "Antenno".



Antenno  
Be informed. Get involved.



## New \$2.1 million Waverley Water Treatment Plant

Last month, the taps were turned on and water started flowing through Waverley's new \$2.1 million Water Treatment Plant.

South Taranaki District Mayor, Phil Nixon says he was extremely pleased to see the plant completed and operational as Waverley had been experiencing issues with the town water supply.

"The Council has been working to address this and has built a new \$2.1 million water treatment plant for the town. The new Waverley Plant will help ensure the town has safe drinking water that fully meets the Drinking Water Standards for New Zealand."

*Deputy Mayor Rob Northcott (left) and South Taranaki Mayor Phil Nixon (right) celebrate the successful commissioning of the Waverley Water Treatment Plant.*



## Contact us

Phone (06) 278 0555 | Tollfree 0800 111 323 | Email [contact@stdc.govt.nz](mailto:contact@stdc.govt.nz) |  
Online [www.southtaranaki.com](http://www.southtaranaki.com) | Facebook 'South Taranaki District Council'

# SOUTH TARANAKI DISTRICT COUNCIL ADOPTS ZERO RATE INCREASE IN 2020-21 ANNUAL PLAN

When we started preparing our 2020/21 Annual Plan late last year COVID-19 was something few of us had even heard about. In the months since, the world has experienced social and economic disruption on a scale not seen in most of our lifetimes and it will be felt for some time. Consequently, our focus for the next year will be on ways we can support our community through the recovery and undertake activities to stimulate economic growth using, where possible, local businesses and contractors. This Annual Plan contains a range of measures aimed at bringing relief to residents and businesses, some of which can be actioned immediately while others are more long term and will require additional planning before being implemented. The key measure is to have a zero % rate increase for the 2020/21 financial year. As part of the Council's 2018 – 28 Long Term Plan, rates were projected to increase in 2020/21 by around 3.36%. However, given the financial burden COVID-19 will place on many families and businesses we have applied a zero % rate rise. In addition, the Council has put a freeze on fees and charges and is offering payment plans and remission of rate penalties for those experiencing financial hardship. Council is able to achieve the zero rate's rise due to the prudent and effective financial management of the organisation by staff and elected members over many years. Accordingly, this Council is in a sound financial position and we are able to take an additional oneoff (\$722,500) contribution from our Long Term Investment Fund to realise this measure. There are no changes in levels of service, and we will continue to meet our current and future infrastructure needs without compromising future plans or our overall financial position.

## Key Relief Measures the Council is implementing include:

- Zero % rate increase
- Nil increase to Fees and Charges
- Payment Plans and Rate Penalty Remissions for those experiencing financial hardship

## Ongoing Economic Recovery Measures: We will look at how we can support longer term economic recovery by:

- Seeking Government financial assistance for and undertaking six significant 'shovel ready' projects. These are: Nukumarū Station Road, Te Ramanui o Ruapūtahanga, Waimate West water mains replacement, desludging the Hāwera WWTP Anaerobic Lagoon, Hāwera Business Park infrastructure and Waimate West Reservoir
- Proceeding with projects such as the Manaia Community Facility and Swimming Pool upgrade
- Bringing some of our capital projects and other



development initiatives forward in our 2021-31 Long Term Plan (such as the Hāwera Business Park and associated infrastructure work and the Eltham, Manaia, Ōpunakē, Pātea and Waverley Town Centre upgrades).

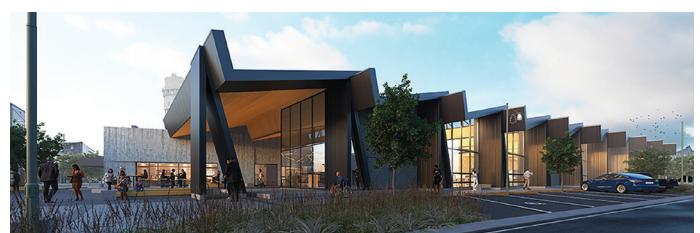
These are just the first of several initiatives the Council will consider over the coming year. We will look to work closely with businesses, Iwi and other partners to develop further measures that will support

the ongoing welfare of our District. At the same time we will continue to focus on revitalising the Hāwera Central Business District, (primarily through the development of Te Ramanui o Ruapūtahanga – the new library culture and arts centre), developing town centre strategies for Eltham, Manaia, Ōpunakē, Pātea and Waverley, implementing the District Pathways Programme, building a new Manaia Community Facility and making further improvements to our roading, stormwater, water and wastewater infrastructure including new Reservoir for Waimate West water supply. Our total operational expenditure across all activities in 2020/21 is \$67.3 million and capital expenditure \$27.5 million, of this we will spend approximately \$25 million on our District roads activity (operational and capital expenditure), including around \$700,000 on footpaths. The road to recovery for our communities will not be an easy one. However, our sound financial position, has enabled our Council to implement measures that will support and hasten that process.

South Taranaki Mayor,  
Phil Nixon



Concept plans for the Manaia Swimming Pool



Concept plans for Te Ramanui o Ruapūtahanga