



Tō Reo - Mō ngā Kaikōwhiri a-Rohe Your Voice – For Local Representation



Arotakennga Kaikōwhiri Representation Review

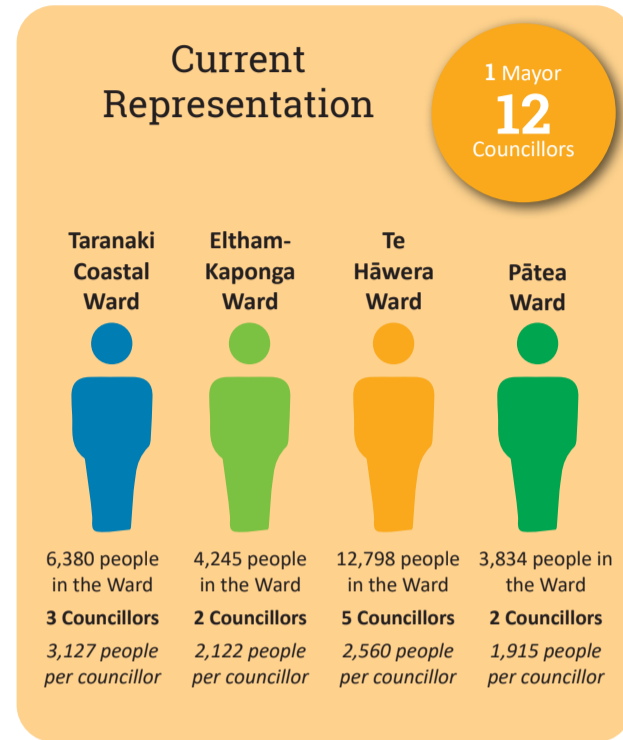
We are reviewing how the South Taranaki District Council represents our communities by way of a Representation Review. All councils are required to review their representation every six years. In November 2020, Council decided to establish a Māori ward/s and that decision triggered the need to review our Council representation for the local body elections in 2022 and 2025.

What are we reviewing?

- How many councillors should represent the District? (South Taranaki can have between 5 and 29 councillors*)
- Are they elected from wards or 'at large' across the whole District, or a mix of both?
- Should we retain our community boards?
- Should the Māori representatives be elected from one ward or two?

Council must consider three key factors to ensure effective representation of our communities. This is required for both the Māori and General electoral populations:

- Communities of interest
- Effective representation of communities of interest
- Fair representation of electors

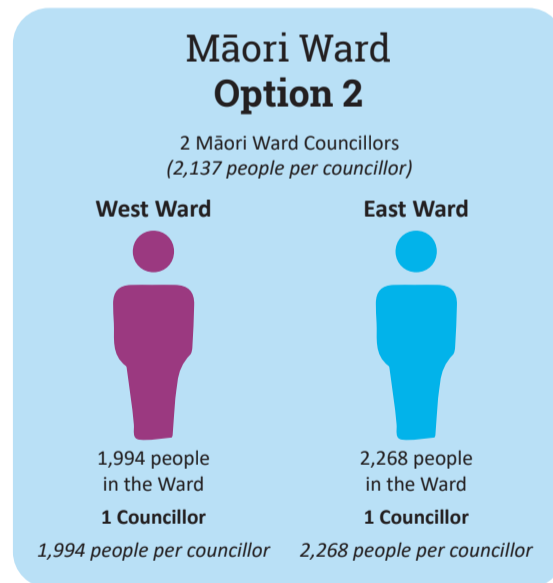
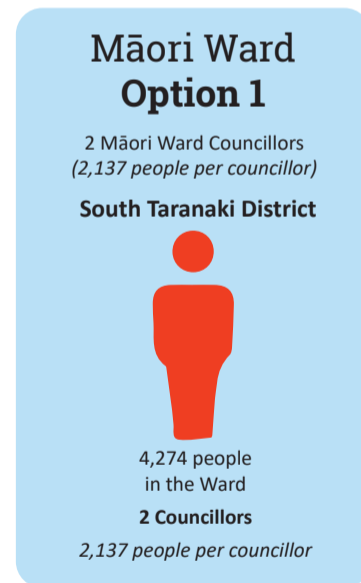


Did you know?

* The amount of money set aside to pay the Mayor, Councillors and Community Board members is determined by an independent body called the Remuneration Authority. It is based on the population of the District. This means whether you have 5 Councillors or 29 Councillors the pool of funding available stays the same.

How can I give my Feedback?

You can give your feedback by filling out the survey on our website www.southtaranaki.com or by calling into any one of our seven LibraryPlus centres or our Administration Building in Hāwera by 5pm Friday 9 July. Alternatively you can call us toll free on 0800 111 323 and give us your feedback over the phone. Just ask to speak to the Representation Review team. Once we get all the feedback from the survey, we'll create an initial proposal (one option) and we'll ask you for your feedback again in late July 2021. **The survey closes 5pm Friday 9 July.**



Find out more!

Head online to www.southtaranaki.com (or scan the QR code on the left with your cellphone) to have a look at the boundary maps to see how the District's Wards may vary with each option.

