

Tuia Taitonga Southlink



He karere tā te Kaunihera o Taranaki ki te Tonga News from the South Taranaki District Council

The South Taranaki District is now at Red on the COVID-19 Traffic Light System. Find out more at www.covid19.govt.nz

Residents' feedback of Council services to be canvassed

South Taranaki residents have the opportunity to give feedback on the performance of Council during the annual Resident Satisfaction Survey which is underway at the moment. The telephone survey will be conducted by independent research company, Research First, on behalf of Council and will run for around three weeks as well as an online survey available on the Council's website www.southtaranaki.com. Council's Corporate Services Group Manager, Marianne Archibald, says residents will be called at random on weekdays between 3pm and 8.30pm, and between 10am and 5pm on weekends. "The survey gives residents a chance to tell Council what they think about a wide range of Council services and activities," says Ms Archibald. "Residents will be able to rate Council services such as libraries, roads, parks and playgrounds, public toilets,

rubbish and recycling collection to name a few. They'll also have the opportunity to rate the overall performance of the Council," she says.

"I encourage people to participate in the survey if contacted, as the results play a valuable role in Council's planning for the future and it lets us know where we're performing well and where we need to do better."

The survey seeks to achieve a representative cross-section of residents across townships and rural areas of the District and across various age groups and gender.

The survey is expected to take around 15-20 minutes to complete and results should be available in April.

If you have any questions regarding the research, please contact Adelaide Hansson at Research First on 027 305 4712.

Upcoming meetings

Policy and Strategy Committee
Monday 31 January, 1pm
Camberwell Lounge, TSB Hub,
Camberwell Road, Hāwera

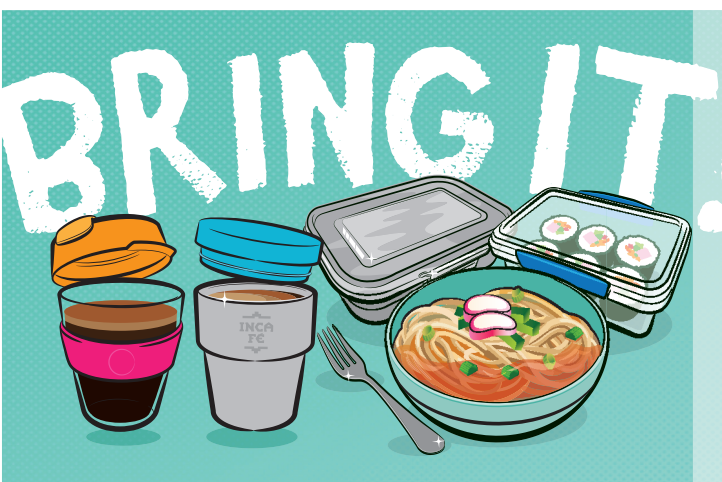
Te Kāhui Matauraura
Wednesday 2 February, 10am
Community Centre Hall, Albion
Street, Hāwera

Environment and Hearings Committee
Wednesday 2 February, 4pm
Council Chamber, Administration
Building, Albion Street, Hāwera

Audit and Risk Committee
Wednesday 9 February, 11am
Camberwell Lounge, TSB Hub,
Camberwell Road, Hāwera

Council facilities at Red Alert Level

All Council public facilities (Council Administration Building / LibraryPlus Centres / South Taranaki i-SITE Information Centre / TSB Hub / pools/ Aotea Utanganui - Museum of South Taranaki) remain open to all visitors with the physical distancing, mask wearing and contact tracing measures in place. Keep an eye out online for further updates on Council services, facilities and events www.southtaranaki.com/covid.



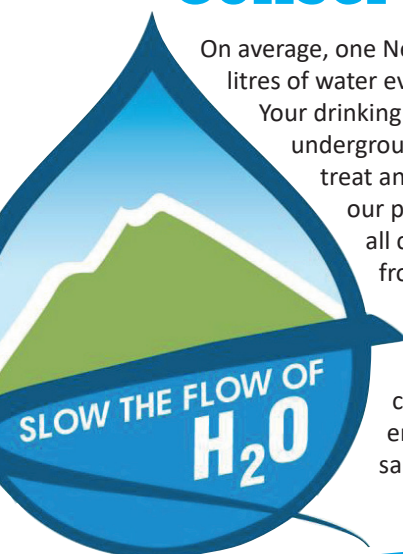
Council, Sustainable Taranaki and eateries across South Taranaki are teaming up to make it easier for customers to make the switch to reusable coffee cups and food containers.

As part of the Bring It! campaign, cafés and food businesses across the District are encouraging customers to bring their own takeaway containers and coffee cups so that these can be used when purchasing takeaway food and drinks. Some Bring It! eateries will even provide a discount when you bring your own cup/container. Keep an eye out for the Bring It! posters in participating food businesses. You can also find a full list of South Taranaki Bring It! businesses online at www.southtaranaki.com/bringit.



We have noticed an increased number of dogs with Canine Parvovirus (Parvo) within our communities. The virus has an incubation period of 6-10 days for symptoms to show in a dog. Parvo can live within the environment up to nine years which makes it very difficult to control. Unvaccinated puppies and older dogs are the most vulnerable and susceptible to catching the disease. If your dog has not yet had any parvo vaccinations or is due for a booster, please ensure you visit the vets to better protect your canines.

Conserve water to avoid restrictions



On average, one New Zealand household uses about 500 litres of water every day. That's over 2,000 cups!

Your drinking water comes from streams or underground sources (aquifers) which we then treat and distribute to your house through our pipe networks. The more water we all conserve, the less has to be taken from these sources, reducing our environmental impact.

Conserving water also means we save on treatment and reticulation costs. So conserving water helps the environment and saves money at the same time.

There are a number of things we can do to reduce the amount of water we use around the house.

- Take shorter showers.
- Wait until you have a full load before starting the washing machine or dishwasher.
- Wash your fruit and veggies in a bowl, rather than running the tap, and reuse the water.
- Compost or worm farm your food scraps. Waste disposal units use 30 litres of water daily.
- Grow your lawn a little longer in summer.
- Water gardens in the early morning or in the evening once the heat of the day is done.



Antenno
Be informed. Get involved.

Antenno App

Keep up-to-date with Council news in the areas you care about. Download the Antenno app today! For more information visit southtaranaki.com/Antenno.

www.southtaranaki.com
Ph: (06) 278 0555 or 0800 111 323