

Te Tohu a Toi

STATE OF THE ARTS

South Taranaki Arts Bulletin # 52

Spring 2023

| [Art News](#) | [Opportunities](#) | [Exhibitions](#) | [Art Events](#) |

Welcome to our Spring edition of State of the Arts.



The South Taranaki Creative Space artist community created a large scale three-panel mural (pictured above) over many months earlier this year. The original design reflects our natural environment, culture and local stories. The vibrant panels are installed on the construction wall of the new Te Ramanui o Ruapūtahanga building on High Street, Hāwera. Well done and many thanks to all involved, the mural is a wonderful addition to the CBD. Another public art installation is planned for the Regent Street wall in October - street art posters created by students from Te Paepae O Aotea. Watch this space!

I curated an exhibition at Lysaght Watt Gallery in Hāwera last month. *Kainga: Home* featured works in a wide variety of mediums by 42 artists from Waverley to Pūniho. The show presented a mix of established and emerging artists and offered a platform for connection, future collaboration and celebration of our collective creativity. I asked artists 'What does 'home' mean to you? Artists could explore concepts of home in relation to any personal interpretation – the works ranged from literal homes, local environment and spaces, history, storytelling, aspects of culture, family, whakapapa, identity and beliefs, reflecting who we are and what is important to us. It was really good to have the opportunity to reconnect with artists and get to know some new ones too. I also hosted groups of youth and art students at the gallery - they were blown away with range of skills and subjects on show. Many thanks to all involved!

Please continue to support and be a part of our galleries, groups, projects and events – thanks for your positivity, commitment and vision to keep the arts alive and thriving.

We are now coming into a busy time of year - trails, festivals, events, exhibitions and awards throughout the district. Go well, have fun and make art!



Ngā mihi,

Michaela

Michaela Stoneman | Arts Co-ordinator | South Taranaki District Council | 0800 111 323
michaela.stoneman@stdc.govt.nz | www.southtaranaki.com



Artists Holly Smith and Jonny De Painter at the *Kainga:Home* opening event.

South Taranaki Creative Communities Funding

The South Taranaki Creative Communities Scheme provides funding assistance for community-based arts activities in South Taranaki that meet one or more of the following funding criteria:

- **Broad community involvement** - A project that will create opportunities for local communities to engage with and participate in arts activities.
- **Diversity** - A project that will support the diverse arts and cultural traditions of local communities, enriching and promoting their uniqueness and cultural diversity.
- **Young people** - A project that will enable and encourage young people (under 18 years) to engage with and actively participate in the arts.



The South Taranaki CCS Committee is comprised of representatives from South Taranaki Community Boards, our local arts community, Iwi and Youth.

The last South Taranaki District Creative Communities application round opened in August 2023, and closed on 1 September 2023. **The next South Taranaki CCS round will be in March/April 2023.** If you have an idea for a project or would like support with your application, you can email STDC Arts Coordinator Michaela Stoneman for support, any time of the year – michaela.stoneman@stdc.govt.nz

For detailed information and forms, please visit the link [here](#)

Any enquiries to discuss an application, email funding@stdc.govt.nz or phone 0800 111 323 or 06 278 0555



Creative Taranaki News

Funding Application Clinics: South Taranaki

Following the successful workshop in Hāwera in June with funding guru Valerie Barraclough, South Taranaki District Council are offering a few subsidised funding application clinics. At these clinics, you can bring along your applications-in-progress for one-on-one advice and assistance. Valerie has over 15 years experience in this area as both applicant and assessor – a unique position of being able to write applications while maintaining the lens of how funders think. All enquiries and to book a one-on-one session, please

contact Michaela Stoneman, STDC Arts Co-ordinator.

Coffee & Kai with Creative Taranaki

Wednesday 27 September 9:00 am-10:30 am - Manifold Coworking Space, 49 Currie St, New Plymouth

Ngāmotu-New Plymouth will be buzzing with creative energy at Creative New Zealand's arts leadership conference *Nui te Kōrero* in September, and what better way to start the first day than by sharing coffee and kai with Creative Taranaki and the local arts community. This is a chance for the region's creatives, arts organisations and supporters to meet the Creative Taranaki Trust in a relaxed, informal setting, along with representatives of other arts organisations, both regional and national, including Creative New Zealand. Please RSVP by Friday 22 September to trust@creativetaranaki.org

The next round of **Creative Communities Scheme funding for New Plymouth District** opens on 4 September and closes on 15 October 2023. CCS funding is specifically project-based – i.e. you can't apply to cover operational costs. If South Taranaki artists have projects involving activities or people within the New Plymouth District, it could be eligible.

For full details regarding eligibility, timeframes and requirements around CCS funding, [visit the link here](#)

For more information and updates - Facebook: [Creative Taranaki](#) | Website: www.creativetaranaki.org

Creative New Zealand – Arts Conference

27 - 29 September 2023

New Plymouth International Hotel, Ngāmotu-New Plymouth

Creative New Zealand's arts leadership conference is back this year, held in Taranaki.

The theme for 2023 is Brave New World – A new level and a new way of thinking.

CNZ are looking forward to collectively finding courage to do things differently outside our traditional models of arts leadership, practice and engagement. As we respond to our changing environment, what world do we want to create? What are the conditions for success that need to change?

And how will we achieve transformational change together?



For tickets and detailed programme information, visit [Nui Te Kōrero](#) | [Creative New Zealand \(creativenz.govt.nz\)](http://CreativeNewZealand.govt.nz)

Lysaght-Watt Trust Ronald Hugh Morrieson Literary Awards 2023



Awards Ceremony: 7.00 pm Thursday 26 October 2023
TSB Hub, Hāwera

These annual Awards honour the work of local novelist and short story writer Ronald Hugh Morrieson (29 January 1922 – 26 December 1972). Entries for the 2023 Lysaght-Watt Trust Ronald Hugh Morrieson Literary Awards are now closed. The 2023 Shortlist will be announced Thursday 5 October.

Emma Hislop (Kāi Tahu) is this year's Short Story judge. She has an MA with Distinction from the IIML is widely published and holds many awards and residencies. Her debut collection of short fiction, titled *Ruin*, was published with Te Herenga Waka in March, 2023. Emma is a member of Te Hā Taranaki, a collective for Māori writers.

Mikaela Nyman is this year's judge for the Poetry sections. Mikaela writes poetry, fiction and non-fiction in English and Swedish. Her work has been widely anthologised and published in the US, the UK, Nepal, Vanuatu, Australia, Spain and in the Nordic countries. Her second poetry collection is forthcoming in August. Her debut novel *SADO* ('*Shadow/Shadows*') was published by Te Herenga Waka Press in 2020.

Taranaki Daily News editor **Matt Rilko** is the judge for the True Story section (previously known as the research section).

[Visit the website here - Lysaght-Watt Trust Ronald Hugh Morrieson Literary Awards - South Taranaki District Council](#)

Arts on Tour - Whirimako Black

7.00pm Wednesday 29 November 2023 - Doors open 6.30pm
Everybodys Theatre, Ōpunakē

Whirimako Black is Aotearoa's undisputed soul diva. With melodies caressed into shape by the language of her ancestors, Whirimako has carved out a musical pathway leading from the mists of the Urewera to the world.

Described as one of New Zealand's most distinctive singers, Black has collaborated with some of the world's most highly regarded musical artists, such as Donal Lunny, renowned Zimbabwean singer/songwriter Oliver Mtukudzi, and closer to home Dave Dobbyn, Neil Finn, Salmonella Dub, Nathan Haines, and Richard Nunns. Her list of awards include Best Māori Album, Best Jazz Album, and a Silver Scroll award for Best Māori Composition. For this tour, Black is joined on stage by the multi-instrumentalist Kim Halliday who perfectly complements her with her virtuosity, and Mahina Kai's out-of-this-world Taonga Puoro sounds and vocals.



[Tickets on sale by 16 October at Everybodys Theatre and Ōpunakē & Manaia LibraryPlus](#)



Arts in the Park

10.00 am – 3.00 pm Saturday 2 December 2023
King Edward Park, High Street, Hāwera

Registrations are now open for artists and groups to take part in Taranaki's premier outdoor arts and crafts festival. Enjoy the large, pleasant, open environment of King Edward Park to exhibit, demonstrate and sell your arts or crafts - stalls are FREE! A walk through the Park is a voyage of discovery, including local musicians, food stalls, hands-on art activities for kids in the *Art Tipi* and much more. *Arts in the Park* offers an entertaining day for the whole whānau, offering an opportunity to support local artists and craftspeople by purchasing handmade goods to kick-start your Christmas

shopping. Check STDC's Facebook page for updates.

Registration forms available from from www.southtaranaki.com/artsinthepark
For more information contact South Taranaki District Events on 0800 111 323 or email events@stdc.govt.nz

Arts Lease Programme 2023/24 – South Taranaki Artists

The South Taranaki District Council calls for visual art submissions from South Taranaki artists for lease and display in the Council's Administration Building in Hāwera. The Art Lease Programme was established in 1996 to support and nurture our creative community. The foyer gallery enables us to showcase a selection of work from our talented artists and offer their work for sale with no commission taken. To qualify for the Art Lease Programme, artists must reside within the South Taranaki District boundaries. Selected artists are paid a fee of \$150 for a year lease, which is paid in November. Please note: Only wall-hanging artworks are eligible.

To submit artworks (up to 4 per artist), please include this information:

- Your name, address, phone number and email address.
- A clear photograph or scan of the artwork(s). *Digital files at least 1 MB file size, please.*
- Title, dimensions, medium and date of each artwork.

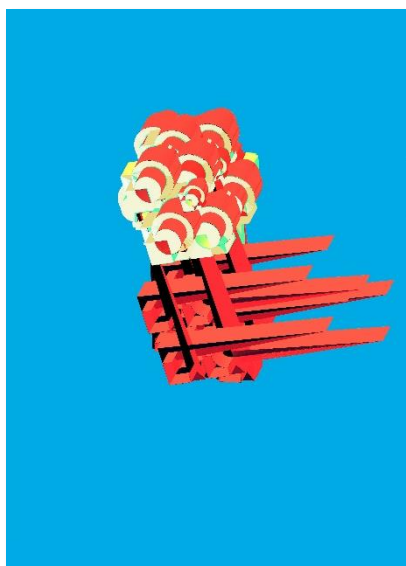
Email to the address below or post to: Michaela Stoneman, Arts Co-ordinator, South Taranaki District Council, Private Bag 902, Hāwera 4640 (or drop into the Albion Street office and attention to M Stoneman).



2022/23 Arts Lease artwork by Bonnie McIntee, Manāia

Closing date for submissions: 5.00 pm Monday 2 October 2023

For more information, please Email: michaela.stoneman@stdc.govt.nz



Winner of 2022 Works on Paper Award, Blue Sky Guardian by Debbie Hahn

Taranaki National Art Awards 2023

Sinclairs Event Centre, Tasman Street, Ōpunakē

Entries Close: Friday 15 September 2023

Awards Ceremony: 7.00 pm Friday 27 October 2023

Exhibition: 10.00 am - 4.00 pm, 28 October – 5 November 2023

Entries are open for this annual national visual arts competition – the 21st year of this iconic annual event, held in Ōpunakē. Cash prizes are offered in seven categories: Painting, Taranaki Artists, 3D, Works on Paper, Fibre Art, Tō Taranakitanga and Photography. Entry is \$25 per artwork; artists can only enter each category once but can enter up to three categories. Artists can enter online. Judges for 2023 are Dr Zara Stanhope, Director Govett Brewster Art Gallery in Ngāmotu New Plymouth and Professor Robert Jahnke, Head of Māori Visual Arts at Massey University, Papaioea Palmerston North. More details on the website. This long-standing event would not be possible without the generous support of sponsors and the Ōpunakē community. All entries are displayed in the exhibition and most works are for sale, offering a unique opportunity to purchase original artworks. The exhibition coincides with the region's 10-day garden festivals and the Taranaki Arts Trail. Check for event updates and news on Facebook.

**Facebook: [Taranaki National Art Awards](#) | Instagram: [taranaki_national_artawards](#)
Please visit the website to find out more and enter: www.taranakiartawards.co.nz**

Ōhawe Creative Community - Pop-Up Exhibition

27 October - 5 November 2023

Open: 9.00 am - 4.00 pm daily, Ōhawe Hall, Ōhawe Beach

Ōhawe Creative Community is a small group of local creatives, gathering once a week at the Ōhawe Hall to socialize and learn new skills. The group is hosting a pop-up exhibition, coinciding with the region's garden Festivals and the Taranaki Arts Trail. Painting, printmaking, mixed media and 3D artworks, alongside produce, vintage clothing and collectables. Just 8km north of Hāwera along Surf Highway 45, Ōhawe Beach is a great spot for a picnic and to enjoy the South Taranaki coastline.



Taranaki Arts Trail 2023

Taranaki Arts Trail Event: 27/28/29 October & 3/4/5 November
9.30 am - 4.30 pm daily. Free admission

Taranaki Arts Trail Exhibitions:

Percy Thomson Gallery, Stratford : 22 September - 15 October 2023

Lysaght Watt Gallery, Hāwera : 16 October - 11 November 2023

Gover St Gallery, New Plymouth: 20 October - 10 November 2023

The Taranaki Arts Trail 2023 is celebrating its tenth trail this year, with 117 participating artists opening their studios throughout the region and a suite of exhibitions and events to entertain visitors.

This year, Taranaki Arts Trail is sponsoring the 'Taranaki Artist' section of the Taranaki National Art Awards in Ōpunakē. The winner will receive

\$500 prize money and fees-free registration to TAT 2024, worth \$250, including all the extra benefits of being a participating TAT artist. The awards exhibitions coincide with the Taranaki Art Trail and garden festivals.

Gover St Gallery In New Plymouth is the official TAT information hub throughout the trail.



Look out for the eye-catching brochure, full of information about the artists, events, evenings, workshops and tours that are happening this year. You can request a copy to be sent directly to you. Email your full postal address to :

chair.taranakiartstrail@gmail.com

Email: taranakiartstrail@gmail.com | Website: www.taranakiartstrail.co.nz

South Taranaki Creative Space

South Taranaki Creative Space is a community-focused creative hub in the Hāwera CBD, providing a welcoming space to meet, interact, learn new skills and network with other creative people. The *Community Unity Gallery* has exhibitions changing monthly. Up to two artworks per artist, \$5 koha hanging fee, no commission taken on sales. All welcome - please get in touch to exhibit, join a class or book a workshop.



Creative After-School Kids Art Classes:

Weekly, Tuesday - Thursday during school terms.

Classes cover a wide range of mediums to help young creatives with their artistic development by exploring different ideas and techniques. Designed for students who have a genuine interest to learn art and creativity and attend regularly.

Creative Adults Art - Beginners: Thursdays 6.30 pm - 8.30 pm

Creative Adults Art - Experienced: Tuesdays 6.30 pm - 8.30 pm

Creative Holiday Programmes: For children and families during school holidays.

Teens Emergence Art Class - 13+ - Tuesday's 3.30 – 5pm

The class mission is for students who have a keen interest in art to develop and hone their creative skills in a variety of mediums with the goal of entering the Taranaki Emergence young artist awards held at the Percy Thomson gallery in 2024 and beyond.

SATURDAY WORKSHOPS & FAMILY HOLIDAY PROGRAMMES: A great variety of regular workshops are available and fun programmes for families. Full details and the registration process on the South Taranaki Creative Space Facebook page.

Facilitators: Carl Fairweather and Erryn Willcox | 41 Princes Street, Hāwera | Phone or text: 027 361 6930

Facebook: [South Taranaki Creative Space](https://www.facebook.com/southtaranakicreatespace) | Email: southtaranakicreatespace@gmail.com

Hāwera Repertory News

Ho Ho Ha ha – December 2023

Hāwera Repertory is currently working on a Christmas show of three one-act comedies, directed by Charles Pittams. Check the Facebook page for updates.

Facebook: [Hawera Repertory Society](https://www.facebook.com/hawerarepertsociety)

Website: www.hawerarep.org | Email: hawerarepertsociety@gmail.com



Tatarakihi Primary School Cultural Festival – Te Huihuinga o Ngā Tātariki o Taranaki

Friday 15 September 2023

TSB Hub, Camberwell Road, Te Hāwera

Te Huihuinga o Ngā Tātariki o Taranaki is the Taranaki Primary Schools Kapahaka Festival. 32 rōpū from around Taranaki Mouna will be participating and include those in whakataetae (competing) and whakangahau (non-competing) groups. Pre-sales \$3, door sales are available for \$5. Pōwhiri is at 8.00 am with the first group performing at 8.30 am. The final group will take the stage at 5.25 pm. Come along and support Taranaki tamariki – naumai haere mai.



For further information, check the [Facebook page: Tatarakihi Festival](#) or Email: tatarakihifestival@gmail.com



Elektra – Friday Night Fever

6.00 pm – 9.00 pm Friday 22 September 2023

King Edward Park, Hāwera

Elektra is a community light event, taking over Hāwera's King Edward Park for South Taranaki's annual fire and light festival. Get the family together to stroll through the Park strewn with lights, groovy disco balls and flower power – for one night only! Entertainment includes poi and fire shows from *Highly Flammable* and music performances by *Mitch & his Guitar* on the main stage. Kids will enjoy the *Glow Zone*, featuring glow-in-the-dark artworks by students from South Taranaki Creative Space and Art with Kerryn. Check out the circus play zone to learn skills including spinning plates, juggling, hoop, and poi with *Circus in a Flash Entertainment*. A range of food trucks will be onsite for a picnic dinner.

For more information contact South Taranaki District Events on 0800 111 323 or email events@stdc.govt.nz

South Taranaki Writing Groups

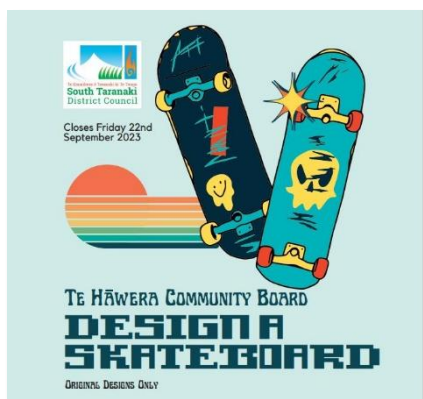
Poetry Get-Together - Eltham

Meet: 10.00 am Last Friday of the month, Eltham LibraryPlus

An informal monthly opportunity for writers and poets to meet and connect with others. Come along for a cuppa, share poetry, or just listen. Contact Helen Pickford - Email: pickson@xtra.co.nz

Hāwera Writers Monthly Zoom Hui

A small group of Hāwera writers have an early morning Zoom hui on the second Tuesday morning of the month. If anyone is interested, to join this, please contact Pip Harrison – Email: pip.harrison@slingshot.co.nz



Hawera Skatepark Design Competition

Competition closes on Friday 22 September 2023

Te Hāwera Community Board is holding a skateboard design competition to decorate the fence at the Hāwera Skate Park.

Chair, Nikki Watson says the Community Board identified the skate park as an area that could be enhanced and thought the existing green fence was a canvas waiting to be painted. "We were inspired by the surfboard fence in Ōpunake which looks really funky, and it was important to us that the users of the park be involved in the process so they could feel a sense of pride and ownership," says Watson. "The current board has an emphasis on promoting youth engagement and we are keen to further develop the skate park as a safe and welcoming place

for young people to hang out. The previous community board also recently upgraded the CCTV cameras that overlook the park," she says. The design competition is in partnership support with local design company Zodiac Signs, who will turn the selected designs into digital graphics for the fence.

For more information, visit

Design templates can be picked up from the Hāwera LibraryPlus or by [clicking this link](#).

Aotea Utanganui Museum of South Taranaki – News and Exhibitions

Aotea Utanganui - Museum of South Taranaki is temporarily closed to the public on Mondays and Tuesdays (until 1 November 2023) while staff prepare and move collection items to the new facility on Richmond Street. The facility was built by the South Taranaki District Museum Trust to display large collection items including the Pātea Freezing Works fire engine and other machinery from the District's past. The Museum will continue to be open from Wednesday to Saturday every week.



Waterways: Ngā Awa o Taranaki ki te Tonga Runs to April 2024

Maunga Taranaki is the well-spring of our region. From his majestic slopes and the surrounding ranges, flow rivers and streams that stretch across the district into the Tasman Sea. *Waterways – Ngā Awa o Taranaki ki te Tonga* will explore the effects human activity has had on the environment; especially as water is an important resource for industry, agriculture and recreation in South Taranaki. Funded by Taranaki Regional Council.

Aotea Utanganui - Museum of South Taranaki, 127 Egmont Street, Pātea | Phone: 06 273 8354

Facebook: [Aotea Utanganui](#) | www.museumofsouthtaranaki.wordpress.com

Email: museum@stdc.govt.nz | Open: 10.00 am - 4.00 pm Wednesday – Saturday (until 1 November 2023)

Gallery Pātea News

Gallery Pātea welcomes new artist Julia Faulkner. Julia has a background in graphic art and has used her considerable skills to capture streets and scenes from Pātea, small works on wood that are a postcard to keep. Julia is also working on drawing everyone in Pātea so she has a busy time ahead!

Hidden Talents - Upcoming Exhibition: October

Supported by the South Taranaki Creative Communities Scheme, this exhibition and performance event encourages young emerging artists in all forms of the arts. In October, the Gallery will feature the work of young artists, with support offered in framing and displaying their works. Local printmaker MB Stoneman ran a Drypoint Etching Workshop for art students at Pātea Area School recently to teach new skills. Expressions of interest from locals with hidden talents to promote are welcome – please contact the gallery. Check Facebook for launch and show updates.



Gallery Pātea will celebrate seven years in December. This will be acknowledged by a group exhibition including many of the talented artists who have contributed to the Gallery over the years.

Gallery Pātea, 56a Egmont Street, Pātea | Open: 10.00 am - 2.00 pm Wednesday - Saturday or by appointment

For more information text Gabrielle Belz 021 0813 8355

Facebook: [Gallery Pātea](#) | Email: gallerypatea@gmail.com

Book Launch – Ngā Pūrehu Kapohau



**Book Launch Event: 1.00 pm - 3.00 pm, Saturday 18 November 2023
Hunter Shaw Building, SH3, Pātea**

A new publication, *Ngā Pūrehu Kapohau: a poetic homage to Pātea, Waverley and Waitōtara* is due for launch in November 2023. The volume is co-edited by Dr Vaughan Rapatahana, Ngauru Rawiri and Trevor Landers. An anthology of poetry garnered from our local communities. Over 400 pages of surprises, treats, astonishment and satisfaction. All are welcome and invited to attend the launch.

Please RSVP by email to matatuhitaranaki@gmx.com by 1 November 2023

Lysaght Watt Gallery: Spring Exhibitions

On a Creative Journey: Sue Baker & Creative Inclusion - Celebrating Diversity: Group Exhibition

Until 16 September 2023

When Sue Baker moved back to Taranaki 10 years ago she joined her sister Erryn's art classes at South Taranaki Creative Space, learning new skills and techniques towards her first solo exhibition. Sue's preferred medium is painting where she likes to 'represent nature and our connection to it'.

Creative Inclusion (South Taranaki Creative Space) was established in 2021 to provide opportunities for people with disabilities and special learning needs to be involved in Art and Creativity Workshops. 15 students who attend weekly workshops in Hāwera have engaged with a variety of mediums - watercolours, acrylics, printmaking, 3D/sculpture, drawing, collage and abstract art.

Are We There Yet? - Deb Williams

18 September - 14 October 2023

Deb Williams is a contemporary fine artist working in a variety of mediums. She paints sea and landscapes, semi-abstracts and human forms in acrylic, oil and encaustic. Deb loves bold colour and texture -creating energy, passion and movement in her works. Deb exhibits throughout New Zealand, paints commissioned works, and sells internationally.

Painting by Deb Williams pictured right

Trail Mix: Taranaki Arts Trail Group Exhibition

16 October – 11 November 2023

A diverse mix of Taranaki artists from around the Maunga showcase work representing their unique style the upcoming 2023 Taranaki Arts Trail. Artists include: Mark Bellringer, Jana Branca, Sam Eva, Krismarlianti Donaldson, Derek Hughes, Suzan Kostanich, Jodi Naik, Pantea Rastegari, Theresa Tongi and Jeanette Verster.

As We See It: Group Exhibition - Hāwera Art Club

From 13 November 2023

Hāwera Art Club annual exhibition, including acrylics, oils, watercolour and mixed media. New members of all ages and abilities are welcome to meet at 1.00 pm, first Friday of each month at the Salvation Army Building, Regent St, Hāwera. Annual subscription is \$15, bring your own materials. An informal group of art enthusiasts meet on the second, third and fourth Friday of the month at the same venue at 10.00 am, free entry



Lysaght Watt Gallery 4 - 6 Union Street, Hāwera

Website: www.lysaghtwattgallery.co.nz | Facebook: [Lysaght Watt Gallery](#)

Hours: Monday - Friday 10.00 am - 4.00 pm Saturday 10.00 am - 1.00 pm | Phone 06 278 7611



Quirky Fox: Art + Framing

Spring Feature Exhibition: Bystander- Andie Taylor

Opening Event: 5.00 pm Wednesday 13 September 2023

Bystander is a solo exhibition featuring the works of Andie Taylor (AU) and serves as a record of otherwise forgotten events. These moments emerge from a world much like ours but fashioned through distinct evolutionary processes. To contextualize this array of motifs, we must rewind about a decade, to a period when the artist resolved that he could delve into his philosophical musings without conceding to didactic implications. The resulting landscapes transformed into contemplative concepts with intertwining conversing elements.

Quirky Fox, 205a High Street, Hāwera | Phone: 06 278 6909

Open: Monday - Friday 10.00 am - 4.30 pm Saturday 10.00 am - 12 noon

Facebook: [Quirky Fox: Art & Framing](#) | Website: www.quirkyfox.co.nz

The Village Gallery: Spring Exhibitions



All In Together - Members Exhibition
21 November – 15 December 2023

The Gallery Shop offers members an opportunity to display their items throughout the year. Cards, prints, paintings, pottery, photographs, jewellery and handmade accessories are available for sale. The Village Gallery invites new Friends of the Gallery members, volunteers and supporters to join our community art gallery in the heart of Eltham.

His & Hers: Mahi from their Studios

Run until 22 September 2023

Explore the creative world of two artists, Dimphy de Vaan and Mark Bellringer. Showcasing a diverse collection of artworks spanning various mediums, including oil painting, printmaking, acrylics, pottery and stone carved andesite bowls.

Fibre Fantasy: Central Taranaki Creative Fibre Groups

25 September - 20 October 2023

Curated by Maree Liddington. Gallery open Tuesday - Saturday.

The Potters: Margaret Foley, Robyn Smaller and Donna Hitchcock

23 October - 17 November 2023

Pottery created for the home and garden. Artist in residence and extended hours during garden festivals.

The Village Gallery, 166 High Street, Eltham

Open: Wednesday – Friday 10.00 am – 3.00 pm. Saturday 10.00 am – 1.00 pm. Closed Sunday and Monday.

Facebook: [Village Gallery Eltham NZ](#) | Email: villagegalleryeltham@gmail.com

Napier Street Studio - Ōpunakē

Napier Street Studio is the workspace and gallery of local artist Shelley Slater.

“I am an abstract minimalist oil painter. My work is simplistic - my narrative the landscape of South Taranaki. Maker of flags, bags and handprinted cards”.

Open afternoons, five days a week.

19 Napier Street, Ōpunakē | Email: ssnapierstreet@gmail.com
Open: 12 noon - 3.00 pm Wednesday - Sunday or by appointment



Māwhero Studio Ōpunakē: Workshops

Artists Ruby Fitzmaurice and Ashleigh Chambers run Māwhero Studio, offering coffee & tea, an art gallery and pottery workshops.

WORKSHOPS: Hand Building Pottery

Mondays: 7.00 pm – 9.00 pm

Hand building is an ancient pottery medium that allows you to make anything using your hands and a few simple tools. In these classes, you will learn and explore the main methods of handbuilding such as coil building, slab building and pinch potting. Choose from a range of different clays and glazes – pieces will be glazed and fired to pick up in

4 - 6 weeks. \$85 per person per session – includes clay, glaze and firing. Booking essential – [message](#) or [book online](#)

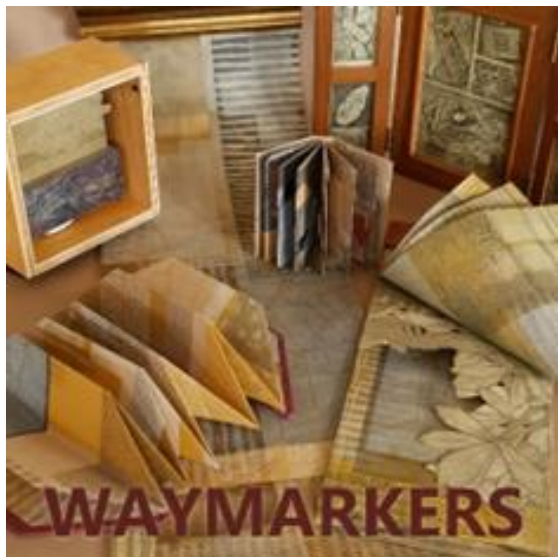
If you would like to arrange a private hand building class for you and your friends/family/team building event, please email mawherostudio@gmail.com. Price includes a platter, as well as clay, glaze and firing. Minimum four participants.

1/78 Tasman Street, Ōpunake | Website: www.mawherostudio.com

Instagram: [mawherostudio](#) | Email: mawherostudio@gmail.com

[Ōpunakē Open Studios & Galleries](#) – *click to follow link*

from out of the blue studio gallery: Exhibitions & Events



Mountain Whispers: Cathy Jane Designs

Until 25 September 2023

An exhibition by Cathy Jane Brickhill. Intricately detailed freeform embroidery sculptures inspired by the natural world of our Mouna.

The Cupboard Collection 2023: Viv Davy

28 September- 6 November

Annual solo exhibition by Viv Davy featuring new works that have been completed over this year. Part of The Taranaki Arts Trail with extra opening hours for the 10 days of the festivals.

Waymarkers - Into the Unknown: Toni Hartill

9 November - 17 December 2023

Through richly layered mark-making, artist's books, dioramas, structures and assemblages, with an acute attention to detail and use of materials, Toni Hartill explores a visceral sense of belonging to the landscape of Aotearoa. Toni will be doing a six-week residency at the gallery throughout her exhibition.

Visit the website for updates on artist's talks, demonstrations, workshops and gatherings. Extended hours over the Taranaki Art Trail.

Contact: Viv Davy. Phone: 021 407 424 | 18 Halse Place, Ōpunakē

Website: www.fromoutofthebluestudiogallery.com | Open: 1.00 pm – 5.00 pm Thursday – Monday or by appointment

Facebook: [from out of the blue studio gallery](https://www.facebook.com/fromoutofthebluestudiogallery) | Instagram: [threadthinker](https://www.instagram.com/threadthinker) | Email: silktangles@me.com

Everybody's Theatre - Ōpunakē

A restored historic theatre run by dedicated locals. In addition to all the latest new releases, the theatre features a selection of classic, foreign and fringe films. Check the website for screening and special events. Bookings can now be made online. Enquiries for special events are welcome.

Boutique Nights: 7.00 pm, first Sunday of the month

3 September: Fathers Day Boutique - The Equalizer 3

8 October: Freelance - 1 pm & 7 pm

SPECIAL EVENTS:

River of Freedom (NZ Documentary): With support from Dr Reknaw musician. 17 September, 1.00 pm

STDC Older Persons Celebration: September 28 - see STDC website for details.

Turkey the Bird Goes Brass Concert: 26 November, 3.00 pm – 5.00 pm

Dr Reknaw Concert: 18 October – 3.00 pm



Everybody's Theatre, 72 Tasman Street, Ōpunakē | Phone: 027 383 7926

Website: www.everybodystheatre.co.nz | Email everybodystheatre@gmail.com



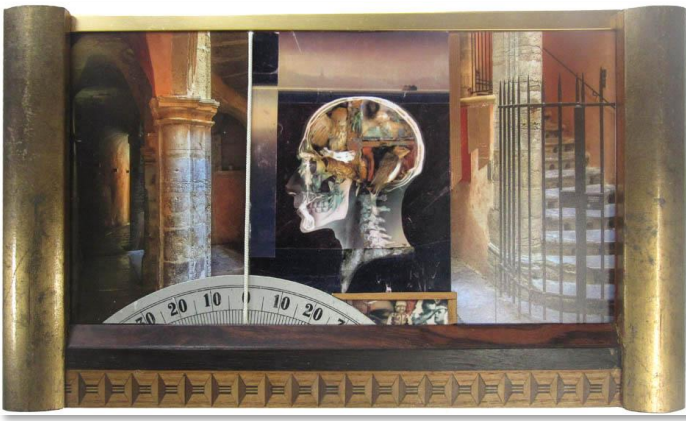
Ōpunakē Players: New Spring Show

Try This For Size OR Moustaches, Muffs and Minstrel

November 2023

Written by Jon Gadsby and David McPhail, and Directed by Wendy Smith. Rehearsals are underway for a new show at Ōpunakē Playhouse – 'A deliberately bawdy Victorian-style melodrama. The poor widow and her beautiful daughter live in a rat-infested hovel, continually pestered by their landlord, the wicked Sir Jasper Dreadful. Sir Jasper wants both the rent in arrears and the daughter's hand in marriage. Otherwise, he will cast them out into the snow'. The talented cast will perform eight shows in mid-November. Check Facebook page for updates and ticket sales.

Ōpunakē Playhouse, 17 Layard street, Opunake | Facebook: [Opunake Players Inc](https://www.facebook.com/OpunakePlayersInc)



'Now is the thin line between the unknown and the forgotten' - Assemblage by Dale Copeland

Virtual TART: News

The Virtual Tart site, as well as being a showcase for 40 Taranaki artists, also has a new exhibition each month by an artist from anywhere in the world.

September & October: *Water Under the Bridge – An exhibition of assemblages by Dale Copeland.*

Retrospective and introspective works with the themes of enjoying what you can, while you can.

November: *Art Beyond the Obvious - Digital collage work by Pam McKinnie.*

For more information and to view exhibitions, visit www.tart.co.nz

Puke Ariki Museum: Spring Exhibitions

State of Nature: Picturing the Silent Forest

Until 5 November 2023

Explore the stories of our native forests through the botanical paintings of artist Fanny Bertha Good (1860-1950) and the experiences of her family in colonial Taranaki. Through her work and creative responses by four contemporary local artists – including South Taranaki artists Dr Tabatha Forbes and MB Stoneman - discover the role that art can play in bringing attention to the state of our natural environment. Follow a multi-sensory journey through the trees, learn what makes them so special, and discover how you can help protect and grow our native forests today.

Te Kitenga o Hina - Illuminating Sacred Wisdom

14 October - April 2024: Puke Ariki, Lane Gallery

Te Kitenga o Hina shares the sacred seasons of Aotearoa: Takuru (winter), Kōanga (spring), Raumati (summer), and Ngahuru (autumn). Discover the significance of the māramataka, the revered Māori lunar calendar, as it guides māra kai and Māori agricultural practices. In Taranaki, initiatives are underway to revive ancient food preservation customs. Explore local communities behind the revitalisation, and witness how the significance of māra kai is being passed down to future generations. Enter *Te Kitenga o Hina* tunnel, look up into the night sky and immerse yourself in the celestial world. Be mesmerised by the beauty of the moon and its different phases, and stunning star constellations that determine planting and harvesting. This exhibition is developed in collaboration with the local community and showcases taonga Māori from Puke Ariki's rich collection of tools used in māra kai.



Māwai kē atu

18 November – 14 July 2024: Puke Ariki Museum, Wall Gallery

Ōpunakē High School, Waitara High School and Te Kura Kaupapa Māori O Ngaruahinerangi proudly present. 'Māwai kē atu'. A collaborative community project facilitated by arts practitioner Haorooro Ki Taihua Hond-Goffe that takes rangatahi from these selected schools on a physical and spiritual journey via air, land and finally to the studio. Māwai kē atu is a reference to a very important question that we all must answer. "Who shall take responsibility for safeguarding our earth mother Papatūānuku and her resources when our respected elders leave this world?" It is the responsibility of each generation to ensure the successful transmission of sacred knowledge. Taking the seeds of hope to restore balance within te tai ao (environment), moving forward prosperously as a collective into the bright future for the benefit of the many generations to come. Through this visual art outcome we are invited to think

of our connections, our sense of place, our link to the land and the stories that shape us and this very place. *Image credit: Haorooro Ki Taihua Hond-Goffe*

Check out the events schedule and [book online](#) or at the [Puke Ariki i-SITE](#) today. [Events](#) | [Puke Ariki](#)

Puke Ariki, 1 Ariki Street, New Plymouth | Phone: 06 759 6060 | Open: 10.00 am - 5.00 pm 7 days | Free Entry
Website: www.pukeariki.com | Facebook: [Puke Ariki](#)

Percy Thomson Gallery – Spring Exhibitions



Abroad: What's In The Suitcase by Morgan & Black

Runs until 18 September 2023

Within this invite-only touring exhibition, each artist presents a work that unpacks an element of their creative practice; with the suitcase being the support and carrier, marking its journey from the studio to the gallery.

Taranaki Arts Trail Preview 2023

23 September – 15 October 2023

PTG is proud to team up with the Taranaki Arts Trail to present this preview exhibition of the Open Studios, which will happen alongside the Centuria Taranaki Garden Festival in late October/November. With a record number of artists on this year's Arts Trail, expect this exhibition to be well represented with artists to consider in preparation for mapping your 'must-see' studios around Taranaki Maunga.

Pictured left, Portrait by Jana Branca from New Plymouth

The Majesty of the Needle – Taranaki Embroiderers Guild

21 October - 12 November 2023

Stratford Art Society Spring Group Exhibition

18 November - 10 December 2023

Exhibition Proposals 2025 ARE NOW OPEN. PTG plans exhibition programming well in advance. Find exhibition submission forms on gallery website OPEN CALL, proposals received until the end of September 2023.

Time to renew Friends of the Gallery Memberships for 2023/24. Please enquire in person at the Gallery or renew online.

For all Event/Exhibition Openings, subscribe to our newsletter or follow @percythomsongallery

Percy's Place is the gallery's boutique art shop, open 10.30 am - 3.30 pm on Weekdays, and 10.30 am - 2.30 pm on weekends. The Gallery is currently seeking volunteers to assist with running the shop. The store is full of creations by local artists. If you are interested in spending a day or two each month in the store, please contact the Gallery.

Percy Thomson Gallery, 56 Miranda Street, Stratford | Director: Laura Campbell
Phone 06 765 0917 | Email: director@percythomsongallery.org.nz
Open: Monday - Friday 10.00 am - 4.00 pm. Saturday - Sunday 10.00 am - 3.00 pm
Website: www.percythomsongallery.org.nz | Facebook: [Percy Thomson Gallery](https://www.facebook.com/PercyThomsonGallery)

Fenton Street Art Collective – Spring Exhibitions

Landscapes from This and Other Planets: Karen Taylor - From 24 August 2023

From Walking on Neptune to Standing Still in a Storm, this series of work explores mood, place, and meaning. Sky, sea, and land blur together with little separation, hard lines softened by light and reflection, while an occasional solitary figure conveys a feeling of uncertainty about humanity's place and relevance.

The Passing of Time: Margie Copleston - From 29 September 2023

An abstract nude exhibition showing the effects time has on the female form.

Photography Workshop: Vintage Portraiture

9.00 am- 4.00 pm Monday 9 October 2023

Explores the finer points of creating great portrait photographs through producing three different looks. 6 spaces only \$120 includes morning tea

A Return to Home - Lizzie Beere: From 27 October 2023

This Hawkes Bay artist describes her style as intertwining the abstract and the figurative, in her textured floral paintings and ceramic vessels. Drawn back to her late Father's hometown of Stratford, she brings a fresh collection, to coincide with the Centuria Taranaki Garden Festival 2023.



Open for the Taranaki Arts Trail; Jo Stallard's Studio, Upstairs at Fenton Street, Stratford.

11 Fenton Street, Stratford | Facebook: [Fenton Street Art Collective](https://www.facebook.com/FentonStreetArtCollective) | Email: fentonartscollective@gmail.com

Open: 10.00 am - 2.00 pm – Tuesday - Sunday, closed Mondays | Phone: 021 0299 2839

[Sugar Loafing Arts Cast » Access Radio Taranaki 104.4FM](#) – Local Arts Podcast

Coastal Arts Trail

Discover carefully curated works and timeless treasures, and meet the makers of some of New Zealand's most coveted works. The Coastal Arts Trail celebrates the Western North Island's creative pulse, connecting Taranaki, Whanganui, and Manawatū, where you can venture an easy, self-driving art-lovers tour between the three regions. You're always welcome on the Coastal Arts Trail, and this tour of art is on offer year-round. So, when it suits you to travel; our treasure chest of local gems; galleries, museums, off-the-beaten-track studios and creative rural communities will be ready to provide the creative inspiration you're after. Browse the galleries, open studios, and artist workshops on offer, and start planning your Coastal Arts Trail journey today.



Visitors at Rhonda Crawford's Studio in Ōpunakē

For more information or to plan your trip, visit: coastalartstrail.nz



Gover Street Gallery: News

Gover St Gallery is an independent, not-for-profit, self-funding community art space based in New Plymouth.

Over 450 artists are associated with Gover St Gallery. It provides an outlet for all Taranaki artists to display and sell their work. With a large and diverse range of artwork always on display there is plenty to see, admire and buy.

20 October – 10 November 2023

Taranaki Arts Trail Artists Exhibition

27 October - 5 November: Open 9.00 am - 5.00 pm throughout Taranaki Arts Trail 2023

Taranaki Arts Trail 2023 official Information Hub for brochures, advice and directions.

19 Gover Street, New Plymouth | To exhibit, register, enquire, contact Heidi on 06 757 4278
Open: Wednesday – Monday 10.00 am – 4.00 pm, Sunday 12 noon – 4.00 pm. Closed Tuesday
Facebook/Instagram: Gover Street Gallery | Email: goverstgallery@gmail.com



The Big Idea

The Big Idea is an online hub for artists of all genres. The Big Idea provides you with news updates, the latest jobs and opportunities and events as well as ideas and inspiration from across the creative industries to help you create your own success. The Big Idea is the largest, leading online resource for the arts in New Zealand.

Website: www.thebigidea.nz

**Would you or your group like to have information included in the next edition of
Te Tohu a Toi – STATE OF THE ARTS?**

Please send concise text and photographs for the Summer Edition (December, January, February 2024) to:
Michaela Stoneman, Arts Co-ordinator: michaela.stoneman@stdc.govt.nz

Send information by:
Publish date:

Monday 20 November 2023
Friday 1 December 2023

To unsubscribe to *State of the Arts*, please [email Unsubscribe](#) in the subject line.